

REVISIONS			
REV	ECN, ERN NO.	DATE	APPRD.
J	PRODUCT DRAWING (EAR 12782)	JUN27/05	K.L.

ORDERING CODE: FCC17 - E09PE - 440G

SERIES _____
 SIZE/NUMBER OF CONTACTS _____
 CONNECTOR STYLE _____
 P=PIN
 S=SOCKET
 TERMINATION TYPE _____
 E=VERTICAL MOUNT PCB TAIL

CONTACT FINISH/GOLD THICKNESS
 NO DIGIT=STANDARD 15 MICROINCHES
 [0.38 MICRONS] GOLD ON MATING AREA
 G=50 MICROINCHES [1.27 MICRONS]
 GOLD ON MATING AREA

MODIFIER
 0=STANDARD

FILTER CAPACITANCE
 D=50 pF 5=1000 pF
 B=100 pF 7=1200 pF
 O=180 pF E=2200 pF
 F=330 pF 9=5600 pF
 1=470 pF 8=47000 pF
 4=820 pF N=NOT FILTERED

REFER TO AMPHENOL CATALOGUE FOR FILTER PERFORMANCE CHARACTERISTICS

MOUNTING
 2=.120 [3.05] DIA THROUGH HOLE
 3=#4-40 UNC SELF-LOCKING THREAD
 4=#4-40 UNC THREAD
 5=#4-40 UNC THREADED STANDOFF
 6=M3 x 0.5 THREAD
 9=STANDOFF WITH BOARDLOCK & #4-40 THREADED JACK SOCKETS INSTALLED
 A=#4-40 THREADED STANDOFF WITH BOARDLOCK
 E=CODE 4 MOUNTING WITH #4-40 UNC HEX JACK SOCKET SUPPLIED.
 J=M3 x 0.5 THREADED STANDOFF WITH BOARDLOCK

- NOTES:**
1. MATERIALS: - SHELLS - TIN PLATED STEEL
 - CONTACTS - PHOSPHOR BRONZE PLATED WITH GOLD OVER NICKEL ON THE MATING AREA AND TIN-LEAD ON THE TERMINALS
 - INSULATOR - ENGINEERING THERMOPLASTIC, FLAMMABILITY RATING UL94V-0, BLACK.
 2. CONTACT RESISTANCE: 15 MILLIOHMS MAXIMUM.
 3. INSULATION RESISTANCE: 3000 MEGOHMS MINIMUM
 4. CURRENT RATING: 5 AMPS MAXIMUM
 2 AMPS FILTERING MAXIMUM
 5. OPERATING TEMPERATURE: -40°C TO 85°C.
 6. TOLERANCE, UNLESS INDICATED OTHERWISE, ±.005 [0.13].

SIZE	STYLE	A±.015 [0.38]	B±.005 [0.13]	C±.005 [0.13]	D±.005 [0.13]	E BSC.
E09	PIN	1.213 [30.81]	-----	.666 [16.92]	.984 [24.99]	.432 [10.97]
	SOCKET	-----	.643 [16.33]	-----	-----	-----
A15	PIN	1.541 [39.14]	-----	.994 [25.25]	1.312 [33.32]	.756 [19.20]
	SOCKET	-----	.971 [24.66]	-----	-----	-----
B25	PIN	2.088 [53.04]	-----	1.534 [38.96]	1.852 [47.04]	1.304 [33.12]
	SOCKET	-----	1.511 [38.38]	-----	-----	-----
C37	PIN	2.729 [69.32]	-----	2.182 [55.42]	2.500 [63.50]	1.956 [49.68]
	SOCKET	-----	2.159 [54.84]	-----	-----	-----

DRAWN LESSAJEE DATE 97/12/01
 DESIGNED K.LAMBIE 97/11/27
 CHECKED _____
 I. E. APPRD. _____
 Q. A. APPRD. _____
 DWG. APPRD. _____
 ENG. REL. NO. _____
 REF. _____
 DIMENSIONS ARE IN INCHES [mm] CODE ID. NO. 03554

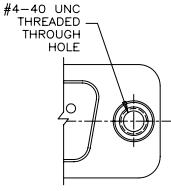
Amphenol Canada Corp.
 TITLE FCC17 FILTERED D-SUB, VERTICAL MOUNT PCB TAIL, PIN & SOCKET

DWG. NO. C	DRAWING NO. P-FCC17-XXXXE-XXOX	REV. J
SCALE 3/1	WT. -----	SURF. -----
SHEET 1 OF 2		

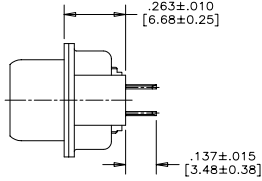
THIS DOCUMENT CONTAINS PROPRIETARY INFORMATION AND SUCH INFORMATION MAY NOT BE DISCLOSED TO OTHERS FOR ANY PURPOSE OR USED FOR MANUFACTURING PURPOSES WITHOUT WRITTEN PERMISSION FROM AMPHENOL CANADA CORP.

REVISIONS			
REV	ECN, ERN NO.	DATE	APPRD.
J	PRODUCT DRAWING (EAR 12782)	JUN27/05	K.L.

ADDITIONAL MOUNTING OPTIONS AVAILABLE FOR PIN OR SOCKET CONNECTOR

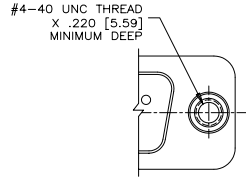


PARTIAL FRONT VIEW

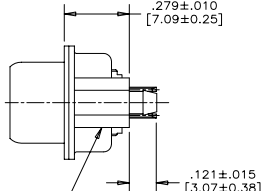


SIDE VIEW

MOUNTING CODE 5

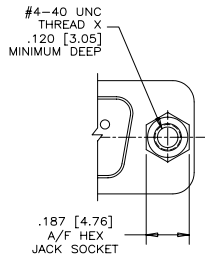


PARTIAL FRONT VIEW

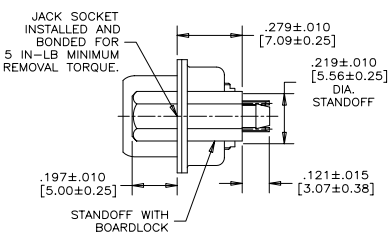


SIDE VIEW

MOUNTING CODE A

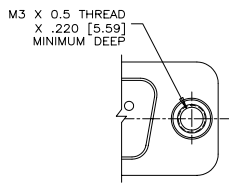


PARTIAL FRONT VIEW

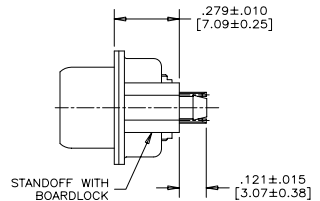


SIDE VIEW

MOUNTING CODE 9



PARTIAL FRONT VIEW



SIDE VIEW

MOUNTING CODE J

THIS DOCUMENT CONTAINS PROPRIETARY INFORMATION AND SUCH INFORMATION MAY NOT BE DISCLOSED TO OTHERS FOR ANY PURPOSE OR USED FOR MANUFACTURING PURPOSES WITHOUT WRITTEN PERMISSION FROM AMPHENOL CANADA CORP.

DRAWN I.ESSAJEE	DATE 97/12/01	Amphenol Canada Corp.
DESIGNED K.LAMBIE	97/11/27	
CHECKED		TITLE FCC17 FILTERED D-SUB, VERTICAL MOUNT PCB TAIL, PIN & SOCKET
I. E. APPRD.		
Q. A. APPRD.		
DWG. APPRD.		
ENG. REL. NO.		DWG. DRAWING NO. P-FCC17-XXXXE-XXOX
REF.		REV. J
DIMENSIONS ARE IN INCHES [mm]	CODE ID. NO. 03554	SCALE 3/1
		WT. ----- SURF. ----- SHEET 2 OF 2

A B C D E F