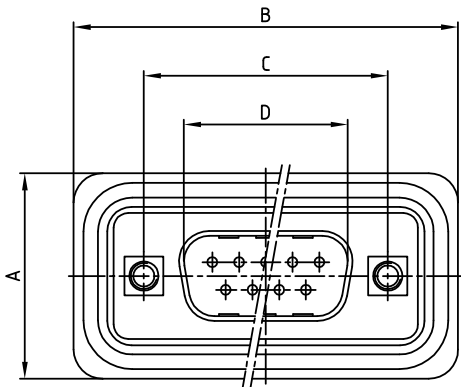
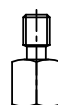
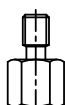
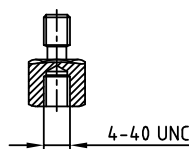
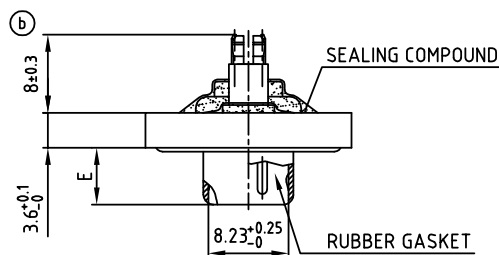
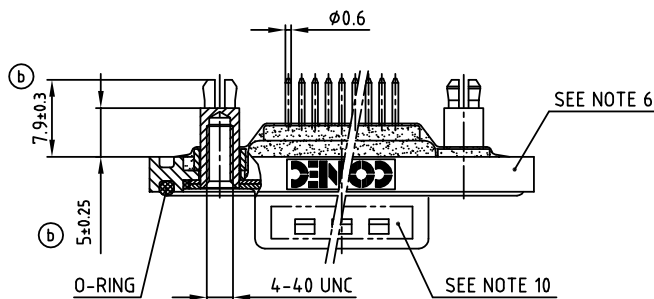


used for: D-SUB

(b)						
No. of pos.	A <sup>+0.2</sup>	B	C	D <sup>+0.25</sup>	E <sup>-0.30</sup>	Part-No.
9	21.1	39.4 <sup>+0.2</sup>	25.00 <sup>+0.12 -0.13</sup>	16.79	5.82	6STD09PCR99E20X
15	21.1	47.7 <sup>+0.2</sup>	33.30 <sup>+0.15 -0.1</sup>	25.12	5.82	6STD15PCR99E20X
25	21.1	61.4 <sup>+0.2</sup>	47.04 <sup>±0.13</sup>	38.84	5.69	6STD25PCR99E20X
37	21.1	78.0 <sup>±0.1</sup>	63.50 <sup>±0.13</sup>	55.30	5.69	6STD37PCR99E20X



AT ALL TIMES WATER RESISTANT CONNECTORS NOT IN USE SHOULD BE COVERED WITH A CONEC WATER RESISTANT CAP OR WATER TIGHT HOOD.



NOTES:

- METALSHELLS: COPPER ALLOY; min. 315µin TIN over 40-80µin NICKEL
- INSULATOR: PBT GF UL 94 V-0, BLACK
- CONTACTS: COPPER ALLOY  
PLATING: 30µin HARD GOLD over min. 50µin NICKEL
- THREADED SPACER CLIP: COPPER ALLOY; min. 200µin TIN over 80µin NICKEL  
PCB-HOLE: Ø3.1±0.1; PCB THICKNESS 1.6mm
- COLLAR: COPPER ALLOY; min. 200µin TIN over 80µin NICKEL
- FRAME: ZINC DIECAST; NICKEL PLATED
- HEXLOCKING SCREW: STAINLESS STEEL
- P.C.B. HOLE DRILLINGS ON DRAWING NO.: 16K111UA
- MAXIMUM TORQUE VALUE FOR THREAD: 6in. LB
- CONNECTOR IS PART MARKED: PART-NO. CONEC ABC (b)

Directive 2002/95 EC  
RoHS  
Compliant

APPROVAL * FREIGABE * DEBLOCAGE * AUTORIZACION * APPROVAL	
CUSTOMER APPROVAL DATE:	
NAME:	TITLE:
COMPANY NAME:	
APPROVAL * FREIGABE * DEBLOCAGE * AUTORIZACION * APPROVAL	

THIS DRAWING MAY NOT BE COPIED OR REPRODUCED IN ANY WAY, AND MAY NOT BE PASSED ON TO A THIRD PARTY, WITHOUT WRITTEN PERMISSION.  
OWNERSHIP AND COPYRIGHT OF CONEC GmbH  
DO NOT ALTER CAD DRAWING BY HAND

tolerance		dim. in mm	
2004	date	name	
drawn	04.02.	Lehmenkühler	
appd.	04.02.	Mickenbecker	
norm	DIN 41652		
d-old			
rev.	description	date	name
5x b	Ä 1983	31.03.2004	Mkf.



scale:	2:1 (5:1)	
material:	SEE NOTES	
title:		
D-SUB MALE 9-37pos. SOLDER PIN STRAIGHT with threaded spacer clip		
dwg no:	AutoCAD 2000	DIN-A
	18K1A245	3
part no:	SEE TABLE	sh:1/1