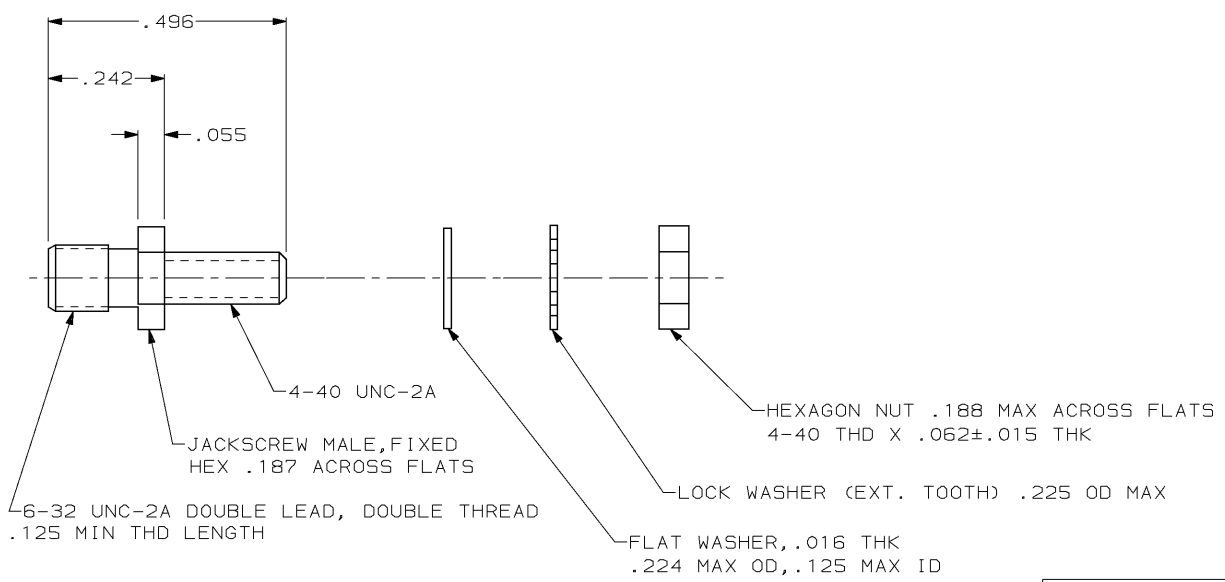


DRAWING MADE IN THIRD ANGLE PROJECTION

THIS DRAWING IS UNPUBLISHED. RELEASED FOR PUBLICATION, 19 .

© COPYRIGHT 19 BY AMP INCORPORATED. ALL INTERNATIONAL RIGHTS RESERVED.

LOC	DIST	P	F	ZONE	LTR	DESCRIPTION	DATE	APPD
AR	39					D REDRAWN AR2318	2-89	-
						E SUPSD -1 PER EC 0020-542-94	12/21/94	GM



SUPSD BY 88619-2	PASSIVATED	88619-2
	-	88619-1
	FINISH	PART NO

DO NOT SCALE PRINT. UNLESS SPECIFIED DIMENSIONS IN INCHES TOLERANCES ON: 2 PLC DEC ± 3 PLC DEC ± .005 ANGLES ± -	DR 2-1-89	AMP AMP INCORPORATED Harrisburg, Pa. 17105	NAME		
	CHK 2-15-89		JACKSCREW KIT, MALE, FIXED		
	APPD 2-15-89		SIZE	FSCM NO	DRAWING NO
	APPD 2-15-89		B	00779	88619
MATERIAL	PRODUCT SPEC	SCALE	SHEET		
STAINLESS STEEL	-	5:1	1 OF 1		
FINISH	APPLICATION SPEC	WEIGHT			
SEE TABLE	-	-			

AMP 1470-15 REV 3-87

21-DEC-94 14:10:19 amp06568 /home/sa026a/dept4023/amp06568/edmmmod

CUSTOMER DRAWING