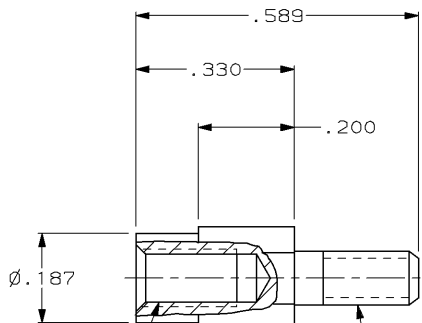


DRAWING MADE IN THIRD ANGLE PROJECTION

THIS DRAWING IS UNPUBLISHED. RELEASED FOR PUBLICATION, 19
 © COPYRIGHT 19 BY AMP INCORPORATED. ALL INTERNATIONAL RIGHTS RESERVED.

LOC	DIST	REVISIONS				
P	F	ZONE	LTR	DESCRIPTION	DATE	APPD
AR	39		D	REDRAWN AR2318	2-89	-
			E	SUPSD -1 PER EC 0020-542-94	12/21/94	GM



4-40 UNC-2A
 JACKSCREW TIP, FEMALE
 HEX .187 ACROSS FLATS
 6-32 UNC-2B DOUBLE LEAD, DOUBLE THREAD
 .210 MIN THD DP.
 FLAT WASHER, .016 THK
 .224 MAX OD, .125 MAX ID
 LOCK WASHER (EXT. TOOTH) .225 OD MAX
 HEXAGON NUT .188 MAX ACROSS FLATS
 4-40 THD X .062±.015 THK

SUPSD BY 88617-2	PASSIVATED	88617-2
	-	88617-1
	FINISH	PART NO

DO NOT SCALE PRINT. UNLESS SPECIFIED DIMENSIONS IN INCHES TOLERANCES ON: 2 PLG DEC ± 3 PLG DEC ± .005 ANGLES ± -	DR 2-1-89 G. OBERMAN	AMP INCORPORATED Harrisburg, Pa. 17105
	CHK 2-15-89 G.D. MILLER	
MATERIAL STAINLESS STEEL	APPD 2-15-89 G.D. MILLER	NAME JACKSCREW KIT, FEMALE, FIXED
FINISH SEE TABLE	APPD 2-15-89 W. PARKER	
	PRODUCT SPEC	SIZE B
	APPLICATION SPEC	FSCN NO 00779
	WEIGHT -	DRAWING NO 88617
		SCALE 5:1
		SHEET 1 OF 1

AMP 1470-15 REV 3-87
 21-DEC-94 13:05:17 amp06568 /home/sa026a/dept4023/amp06568/edmmmod

CUSTOMER DRAWING