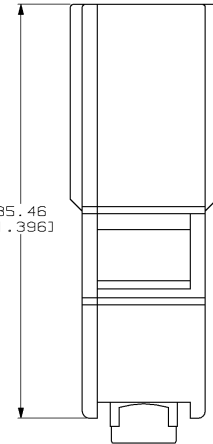
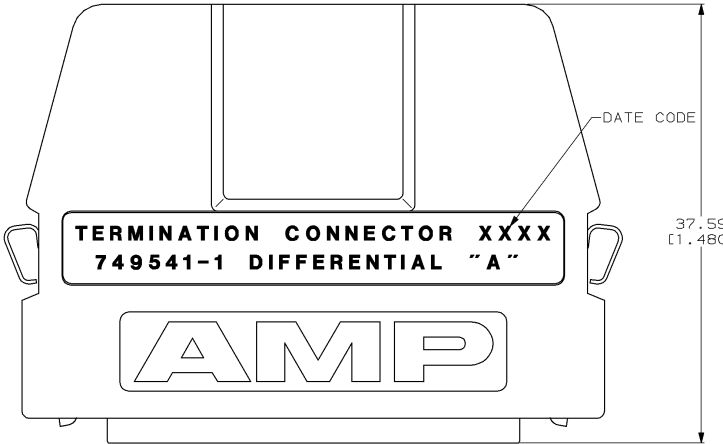
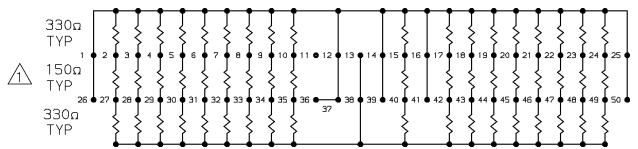
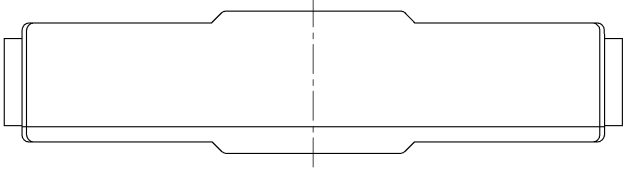
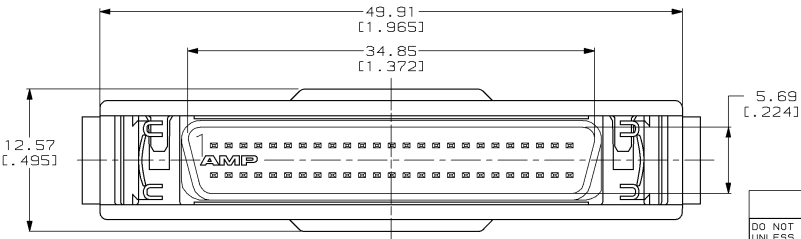


DRAWING MADE IN THIRD ANGLE PROJECTION  
 THIS DRAWING IS UNPUBLISHED. RELEASED FOR PUBLICATION  
 © COPYRIGHT 19 BY AMP INCORPORATED. ALL INTERNATIONAL RIGHTS RESERVED.

MOD	LOC	DIST	P	F	ZONE	LTR	DESCRIPTION	DATE	APPD
11	BD	62					D REV PER EC 0020-601-93	10/27/93	PR
							E REV PER EC 0020-1283-94	01/04/95	PR



SCHEMATIC



TOLERANCE: ±5%

AS SHOWN		749541-1	
REMARKS		PART NO	
DO NOT SCALE PRINT. UNLESS SPECIFIED DIMENSIONS IN mm [INCHES] TOLERANCES ON : 2 PLC DEC ±.25 (.010) 3 PLC DEC ± - ANGLES ± -		AMP AMP INCORPORATED Harrisburg, Pa. 17105	
DR 11/30/89 S.G. SMITH		NAME	
CHK 11/30/89 K. ULERY		TERMINATION CONNECTOR AMPLIMITE .050 Series 50 POSN, PLUG	
APPD 11/30/89 B. MOSSER		SIZE	
APPD 11/30/89 E. MYERS		C 00779	
PRODUCT SPEC		DRAWING NO	
MATERIAL HOUSING: ZINC DIE CASTING CONTACT: PHOS BRONZE INSERT: THERMOPLASTIC RESISTOR: THICK FILM NETWORK ON ALUMINA SUBSTRATE LATCHES: STAINLESS STEEL		749541-1	
FINISH HOUSING: NICKEL OVER COPPER CONTACT: 30µ GOLD OVER NICKEL LATCHES: NONE		SCALE 4:1	
APPLICATION SPEC		SHEET 1 OF 1	
WEIGHT		CUSTOMER DRAWING	

749541-1

A