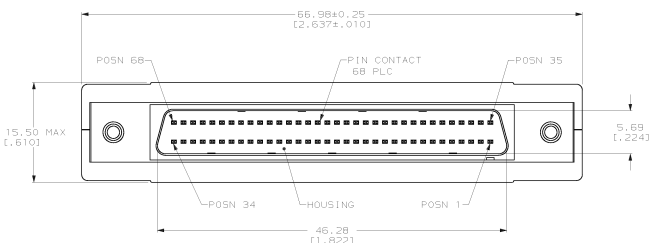
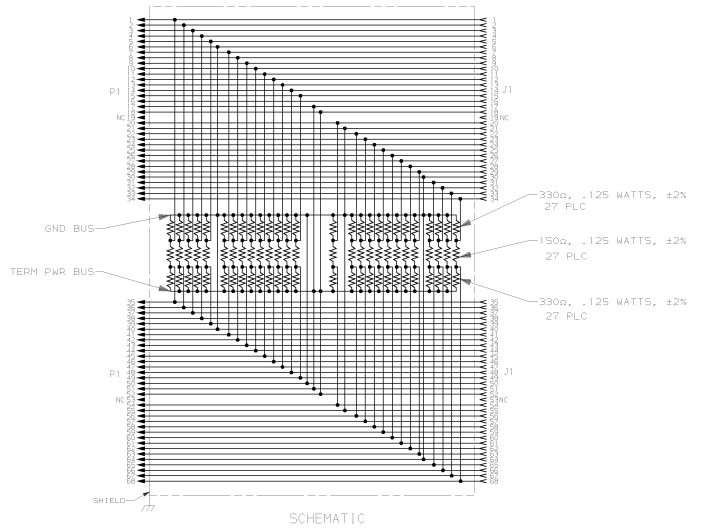
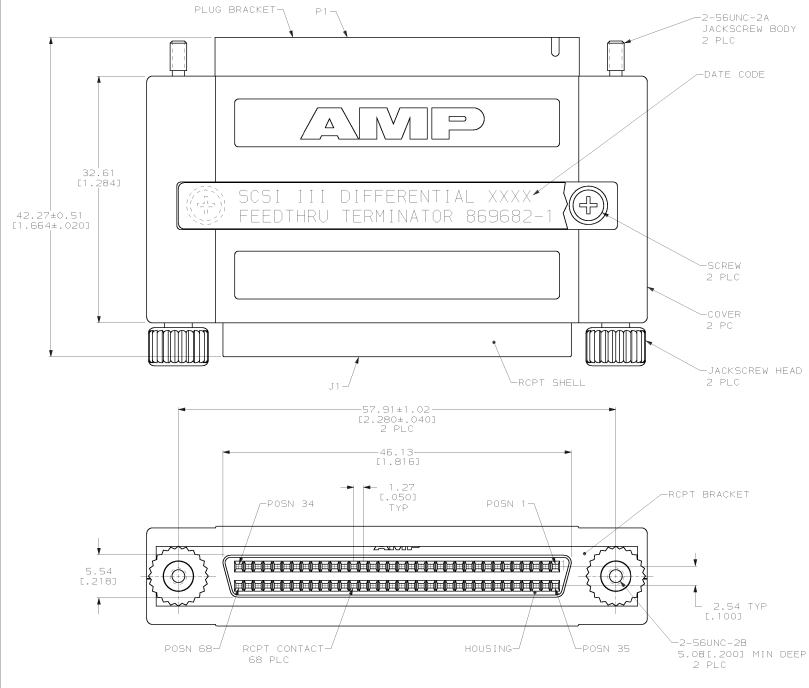


REV. NO.		DATE		DESCRIPTION		DATE	APP.
BD	62	4	204	LW			
				G	REVISED PER EC 051A-0043-99	2/26/99	JG



- ⚠ JACKSCREW BODIES: STAINLESS STEEL; SHELL AND SCREWS: CARBON STEEL;
- CONTACTS: PHOSPHOR BRONZE; HOUSINGS: POLYESTER, BLACK; SHIELD: COPPER;
- COVER: ABS, GREY, UL 94V-0; JACKSCREW HEADS: PVC, BEIGE; BRACKETS: ZINC,
- FLEX FILM CIRCUIT: COPPER ON KAPTON.
- ⚠ PASSIVATED.
- ⚠ 5.09µm (.000200) MIN TIN OR TIN-LEAD OVER 1.27µm (.00050) MIN COPPER.
- ⚠ PIN CONTACTS: 0.76µm (.000030) MIN GOLD FOR A LENGTH OF 3.35 (.132) MIN FROM MATING END OVER 1.27µm (.00050) MIN NICKEL; RECEPTACLE CONTACTS: 0.76µm (.00030) MIN GOLD FOR A LENGTH OF 0.64 (.025) MIN, 0.13 (.005) MAX FROM MATING END OVER 1.27µm (.00050) MIN NICKEL.
- ⚠ 76.20µm (.00300) MIN CARBON/TRIIDE TEMPER.
- ⚠ 3.81µm (.00150) MIN NICKEL OVER 5.09µm (.000200) MIN COPPER.



DO NOT SCALE PRINT. UNLESS SPECIFIED DIMENSIONS IN MM (INCHES) FRACTIONS 2/4 3 PLC DEC = 0.131(005) DECIMALS 9		DR 2-1-93 J. MCINTOSH CHK 2-10-93 R. STONE APPD 2-15-93 R. BELLESMAN PRODUCT SPEC - APPLICATION SPEC - RETURN -	<b>AMP</b> AMP Incorporated Harrisburg, PA 17105-9608 NAME ADAPTER ASSEMBLY, FEEDTHRU, DIFFERENTIAL, SCSI III, .050 SERIES AMPLIMITE™, TERMINATOR SIZE D LK6 CODE 00779 DRAWING NO. C-869682 SCALE 4:1 SHEET 1 OF 1
---	--	---	--

THIS DRAWING IS A CONTROLLED DOCUMENT FOR AMP INCORPORATED. IT IS SUBJECT TO CHANGE AND THE CONTROLLING DRAWING IDENTIFICATION SHOULD BE CONTACTED FOR THE LATEST REVISION.

CUSTOMER DRAWING