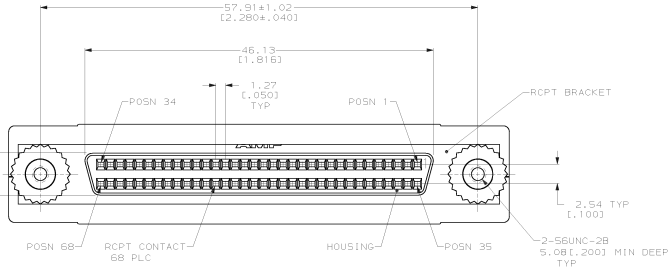
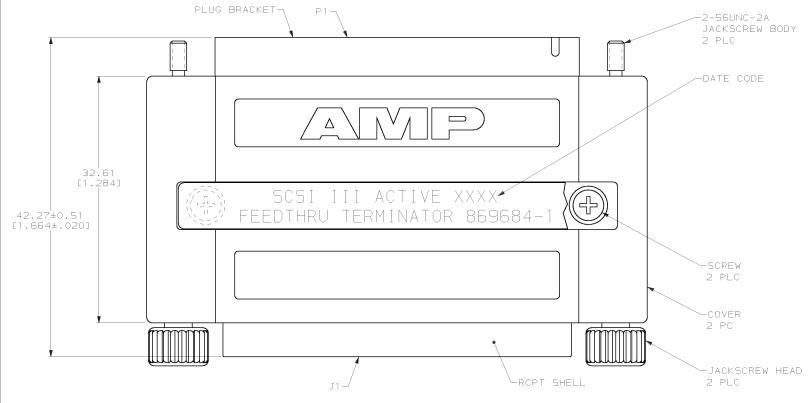
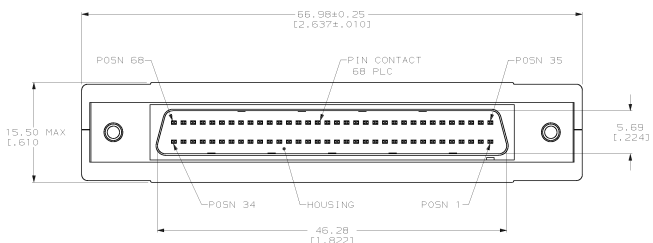
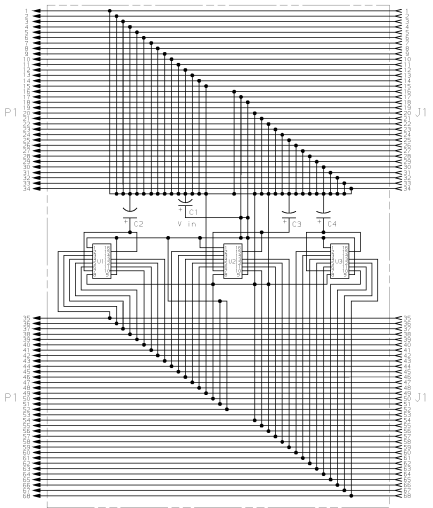


MAKING MADE IN HOUSE UNDER INVESTIGATION
 THIS DRAWING IS UNPUBLISHED
 © COPYRIGHT 1984 BY AMP INCORPORATED. ALL INTERNATIONAL RIGHTS RESERVED.

REVISED PER		DESCRIPTION		DATE	APP
F	REVISED PER EC 051A-0043-99			2/28/89	JG



- ▲ JACKSCREW BODIES; STAINLESS STEEL; SHELL AND SCREWS; CARBON STEEL; CONTACTS; PHOSPHOR BRONZE; HOUSINGS; POLYESTER, BLACK; SHIELD; COPPER; COVER; ABS, GREY, UL 94V-0; JACKSCREW HEADS; PVC, BEIGE; BRACKETS; ZINC; FLEX FILM CIRCUIT; COPPER ON KAPTON.
- ▲ PASSIVATED.
- ▲ 5.08µm (0.000200) MIN TIN OR TIN-LEAD OVER 1.27µm (0.000050) MIN COPPER.
- ▲ PIN CONTACTS; 0.76µm (0.000030) MIN GOLD FOR A LENGTH OF 3.35 (± 0.132) MIN FROM MATING END OVER 1.27µm (0.000050) MIN NICKEL; RECEPTACLE CONTACTS; 0.76µm (0.000030) MIN GOLD FOR A LENGTH OF 0.64 (± 0.025) MIN, 0.13 (± 0.005) MAX FROM MATING END OVER 1.27µm (0.000050) MIN NICKEL.
- ▲ 76.20µm (0.003000) MIN CARBONITRIDE TEMPER.
- ▲ 3.61µm (0.000150) MIN NICKEL OVER 5.08µm (0.000200) MIN COPPER.
- ▲ C2, C3, AND C4: 4.7µF TANTALUM CAPACITOR RATED 15 VOLTS MIN; C1; 2.2µF TANTALUM CAPACITOR RATED 15 VOLTS MIN; CAPACITOR TOLERANCE: ±20%; U1, U2, AND U3; 05210745.



▲ SCHEMATIC

DO NOT SCALE PRINT, UNLESS SPECIFIED. DIMENSIONS IN mm (INCHES)		DR 2-3-89		AMP Incorporated	
2-15-83	3-15-83	CHK 2-15-83	J. FLINOR	DATE	Harrisburg, PA 17105-9608
3-15-83	3-15-83	3-15-83	R.D. FLEISHMAN	NAME	
3-15-83	3-15-83	3-15-83	R.D. FLEISHMAN	ADAPTER ASSEMBLY, FEEDTHRU, ACTIVE,	
3-15-83	3-15-83	3-15-83	R.D. FLEISHMAN	SCSI III, .050 SERIES AMPLITE™, TERMINATOR	
3-15-83	3-15-83	3-15-83	R.D. FLEISHMAN	SIZE	00779
3-15-83	3-15-83	3-15-83	R.D. FLEISHMAN	SCALE	4:1
3-15-83	3-15-83	3-15-83	R.D. FLEISHMAN	DRAWING NO.	669684
3-15-83	3-15-83	3-15-83	R.D. FLEISHMAN	SHEET	1 OF 1

THIS DRAWING IS A CONTROLLED DOCUMENT FOR AMP INCORPORATED. IT IS SUBJECT TO CHANGE AND THE CONTROLLING BUSINESS OPERATION SHOULD BE CONTACTED FOR THE LATEST REVISION.

CUSTOMER DRAWING