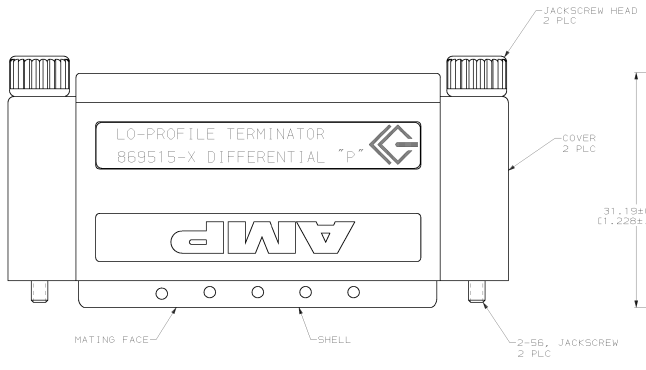
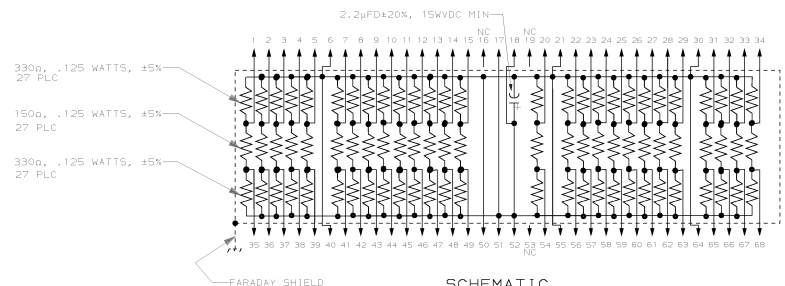
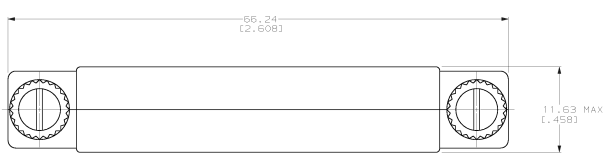
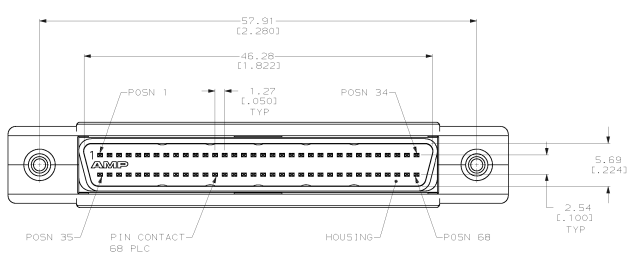


DRAWING MADE IN TRIPLEX ANGLE PROJECTION
 THIRD ANGLE TO UNPUBLISHED, RELEASED FOR PUBLICATION
 © COPYRIGHT 19 BY AMP INCORPORATED. ALL INTERNATIONAL RIGHTS RESERVED.

| REV | ISS | DATE | ZONE | LINE | DESCRIPTION | DATE | APP |
|-----|------------|--------------|------|------|-------------|------|-----|
| F | REV PER EC | 0020-001-93 | | | | | PR |
| G | REV PER EC | 0020-1463-93 | | | | | PLF |
| H | REV PER EC | 0020-0186-95 | | | | | PE |
| J | REV PER EC | 0020-0186-95 | | | | | RF |
| K | REV PER EC | 0640-166-99 | | | | | JK |
| L | REV PER EC | 051A-0168-00 | | | | | MG |



- △ SHELL: CARBON STEEL; PIN CONTACT: PHOSPHOR BRONZE; HOUSING: POLYESTER, BLACK; RESISTOR: THICK FILM RESISTOR COMPOSITION ON ALUMINA SUBSTRATE. JACKSCREW: STAINLESS STEEL; SHIELD: COPPER; COVER: ABS, GREY, UL 94V-0; JACKSCREW HEAD: PVC, BEIGE.
- △ 5.08μm (.000200) MIN TIN-NICKEL OVER 1.27μm (.000050) MIN COPPER.
- △ 0.76μm (.000030) MIN GOLD FOR A LENGTH OF 3.351, 1321 MIN FROM MATING END OVER 1.27μm (.000050) MIN NICKEL.
- △ SEE RESTRICTED CUSTOMER DRAWING 869515-2.



| | | | |
|---|--|--|--|
| DO NOT SCALE PRINT. UNLESS SPECIFIED DIMENSIONS IN MM (INCHES) PAPERWORK: ON 2 P L C SEE # 825(L)00 3 P L C SEE # 7 NOTES # 7 | | DR 8-1-91 J REILINSON CHR 9-30-91 8-37096 APPD 10-3-91 P REILBUS APPD 10-3-91 J REILSON PRODUCT SPEC - APPLICATION SPEC - RETURN - | AMP AMP Incorporated Harrisburg, PA 17105-9608 NAME PLUS ASSEMBLY, 68 POSITION, LOW PROFILE, .050 SERIES AMPLIMITE™ TERMINATOR SIZE D 00779 SCALE 4:1 DRAWING NO 869515 SHEET 1 OF 1 |
|---|--|--|--|

13-JUL-00 10:36:06 amp146R2 /home/amp146R2/cdradd

CUSTOMER DRAWING