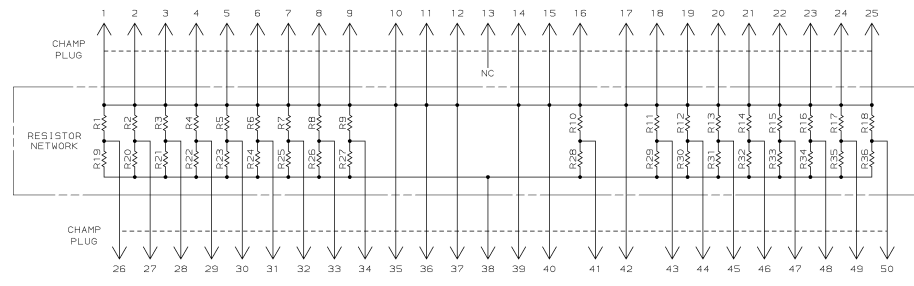
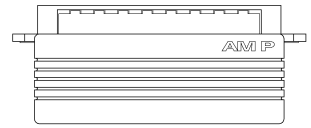
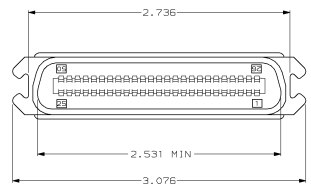
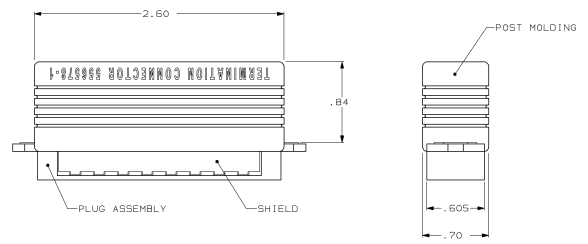


DRAWING MADE IN THIRD ANGLE PROJECTION
 THIS DRAWING IS UNPUBLISHED. RELEASED FOR PUBLICATION
 © Copyright 1984 BY AMP INCORPORATED. ALL INTERNATIONAL RIGHTS RESERVED.

REVOLUTIONS		DATE	APP'D
A	REV. ECN AA-6986	7-24-80	SB
B	REV PER EC 0020-0847-94	07/28/94	SB



ELECTRICAL SCHEMATIC

- ⚠ MATERIALS:
 HOUSING- POLYPHENYLENE, BLACK.
 SHIELD- BRIGHT NICKEL PLATED CARBON STEEL.
 TERMINALS- .010 THICK PHOS BRONZE PLATED WITH .000050 MINIMUM GOLD ON MATING SURFACE OVER .000050 MINIMUM THICK NICKEL UNDERPLATE.
 POST MOLDING COMPOUND- PVC, BLACK.
- ⚠ ALL DIMENSIONS SHOWN ARE MAXIMUM UNLESS OTHERWISE SPECIFIED.
- 3. THE CONTACT SURFACE OF THE TERMINALS ARE COATED WITH LUBRICANT.
- 4. TERMINALS LOCATED ON .085 CENTERS.
- ⚠ UNLESS OTHERWISE SPECIFIED RESISTOR VALUES ARE IN OHMS.
 R1-R18: 330, ±5%, .10W
 R19-R36: 220, ±5%, .10W

DO NOT SCALE PRINT. UNLESS SPECIFIED, DIMENSIONS IN INCHES TOLERANCES ON 1/2 PLZ DEC 4 INCHES		DR 10-23-89 A. HULL	556578-1 PART NO	
MATERIAL	APPRO 11-2-89 J. SILVERSON	CHK 11-2-89 B. FOX	AMP INCORPORATED Mortgage, Pa. 17109	
FINISH	APPRO 11-2-89 J. SILVERSON	NAME	PLUG ASSEMBLY, TERMINATOR, SINGLE ENDED, 50 POSITION, SHIELDED, CHAMP *	
WEIGHT	APPLICATION SPEC	SIZE	CAGE CODE	DRAWING NO
		D	00779	556578
		SCALE	2:1	SHEET 1 OF 1

CUSTOMER DRAWING