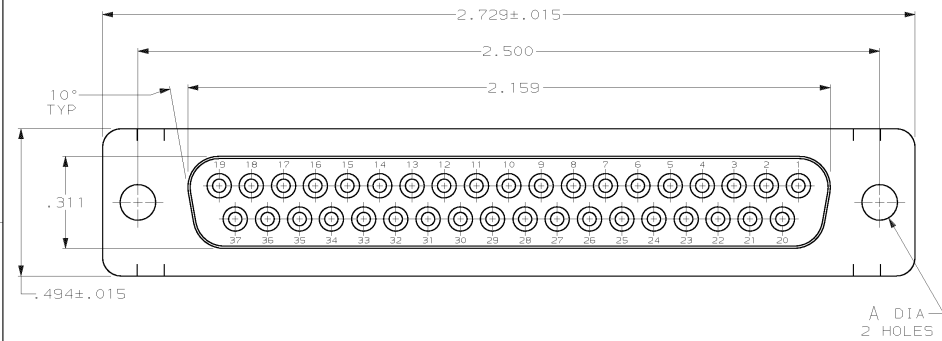
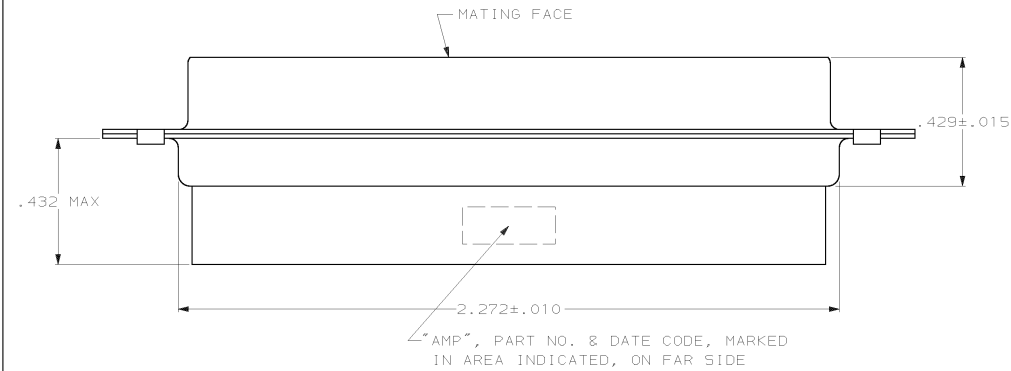


THIS DRAWING IS UNPUBLISHED. RELEASED FOR PUBLICATION .19
 © COPYRIGHT 19 BY AMP INCORPORATED. ALL INTERNATIONAL RIGHTS RESERVED.

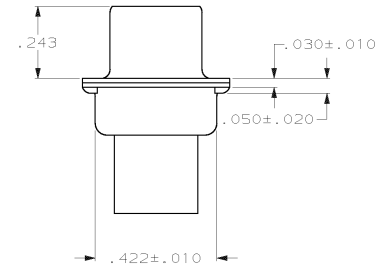
LOC	DIST	P	F	ZONE	LTR	REVISIONS	DATE	APPRO
BD	48				J	REV PER EC OUID-0260-00	12 SEP 01	JR



A DIA
2 HOLES



"AMP", PART NO. & DATE CODE, MARKED IN AREA INDICATED, ON FAR SIDE



- CONNECTOR ACCEPTS SIZE 20 DF SOCKET CONTACTS, RETENTION TINES ARE AN INTEGRAL PART OF INSERT.
- CONNECTOR COMPLIES WITH 108-40005 WHERE APPLICABLE.
- NYLON, FLAME RETARDANT, 94V-0 RATED, GLASS FILLED, BLACK.
- STEEL PER ASTM A109.
- ZINC PLATED PER ASTM B633; TYPE II; CLASS SC1; YELLOW CHROMATE.
- TIN OR TIN-LEAD PLATED PER MIL-T-10727.
- TIN PLATED PER MIL-T-10727 OVER COPPER PER MIL-C-14550.

SUPERSEDED BY 205209-1	SMALL PACK	△	.120	205209-6
OBsolete	STANDARD	△	.154	205209-3
	STANDARD	△	.120	205209-2
	STANDARD	△	.120	205209-1
	PACKAGING TYPE	SHELL FINISH	A	PART NO

DO NOT SCALE PRINT. UNLESS SPECIFIED DIMENSIONS IN INCHES TOLERANCES ON : 2 PLC DEC ± - 3 PLC DEC ± .005 ANGLES ± 2°	DR 7-19-85 5. WELDON	AMP Incorporated Harrisburg, PA 17105-3608
MATERIAL	CHK 7-29-85 J. GERACE	
MOLDED PARTS: △3	APPD 7-29-85 L. BREKOSKY	NAME
SHELLS: △4	APPD 7-31-85 V. KUMAR	RECEPTACLE CONNECTOR, SIZE 4, 37 POSITION, AMPLIMITE™ HDP
FINISH	PRODUCT SPEC	SIZE CAGE CODE DRAWING NO
SHELLS: SEE TABLE	APPLICATION SPEC	① 00779 ②=205209
	WEIGHT	SCALE NT5 SHEET 1 OF 1

THIS DRAWING IS A CONTROLLED DOCUMENT FOR AMP INCORPORATED. IT IS SUBJECT TO CHANGE AND THE CONTROLLING ENGINEERING ORGANIZATION SHOULD BE CONTACTED FOR THE LATEST REVISION.

CUSTOMER DRAWING