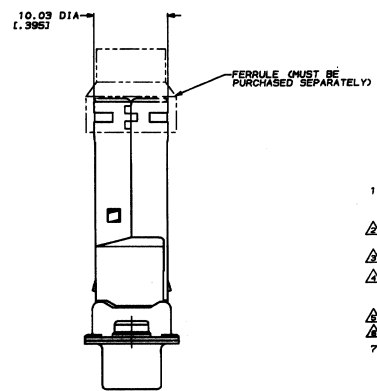
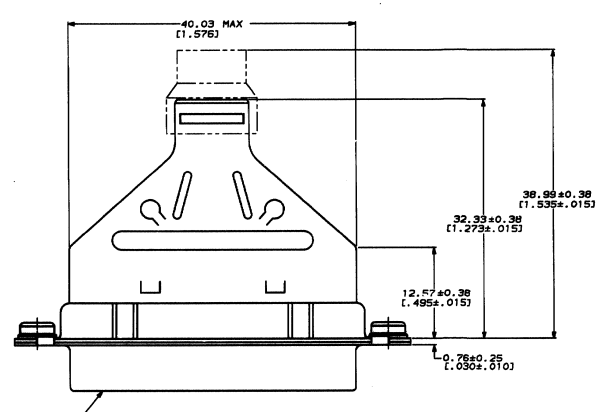
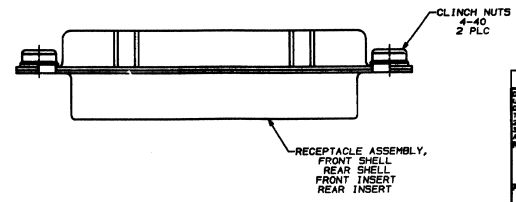
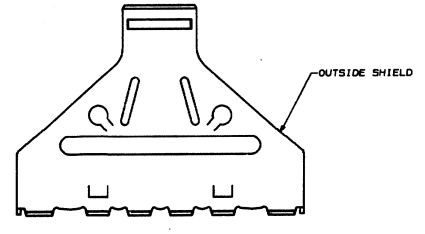
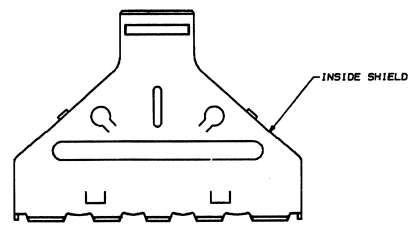
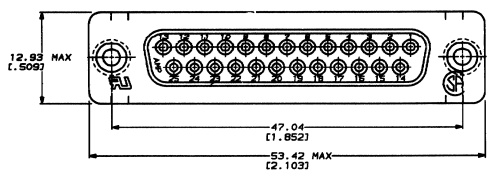


DRAWING MADE IN THIS OFFICE PRODUCTION
 THIS DRAWING IS UNCLASSIFIED. RELEASED FOR PUBLICATION
 BY ACP INCORPORATED. ALL INFORMATION, RIGHTS RESERVED.

REVOLUTIONS		DATE	APPD
0	RELSE PER NRR 2481, WAS 07-5700-7-5		
1	REV PER ECN B04493		



- RECEPTACLE ACCEPTS SIZE 20 PIN CONTACTS. CONTACTS MUST BE ORDERED SEPARATELY. ASSEMBLY MATES WITH ANY 25 POSN PLUG IN AMPLIMITE® SERIES.
- NYLON, FLAME RETARDANT, UL 94V-0 RATED, GLASS FILLED, BLACK.
- CARBON STEEL PER ASTM A 109.
- TIN PLATING PER MIL-T-10727, COPPER PLATING PER MIL-C-14550, ZINC PLATING PER ASTM B639, TYPE III, CLASS SCl, CLEAR CHROMATE.
- 5.08µm (0.000200) MIN TIN OVER 1.27µm (0.000050) MIN COPPER.
- ZINC PLATED.
- EACH PART INDIVIDUALLY BULK PACKED.



749763-1		PART NO	
DO NOT SCALE PRINT. UNLESS SPECIFIED	OR 06/07/98	AMP INCORPORATED	
DIMENSIONS IN IN (INCHES)	L-SIZE	Millsboro, Pa. 17558	
DRAWINGS ON 11x17 SHEET	OR 0-20-25	RECEPTACLE KIT, UNASSEMBLED, WITH CLINCH NUTS, SIZE 3, 25 POSITION, SHIELDING HARDWARE, AMPLIMITE, HDP-20®	
PLC DEC = 0.125, 0.000	1/8-CLOSER		
PLC DEC = 0.125, 0.000	APPD 8-20-83	DATE CODE	
ANGLES = 2°	8-SHOWN	D 00779	
MATERIAL: NYLON	APPD 8-20-83	DRAWING NO	
INSERTS: 1. SHOWN	J. SHOWN	749763	
SHELLS & SHIELDS: 1	PRODUCT SPEC	SHEET	
CLINCH NUTS: 1	108-40030	1 OF 1	
PRINTING: 1	APPLICATION SPEC	SCALE	
SHELLS & SHIELDS: 1	114-40007	4:1	
CLINCH NUTS: 1	MATERIAL		

CUSTOMER DRAWING