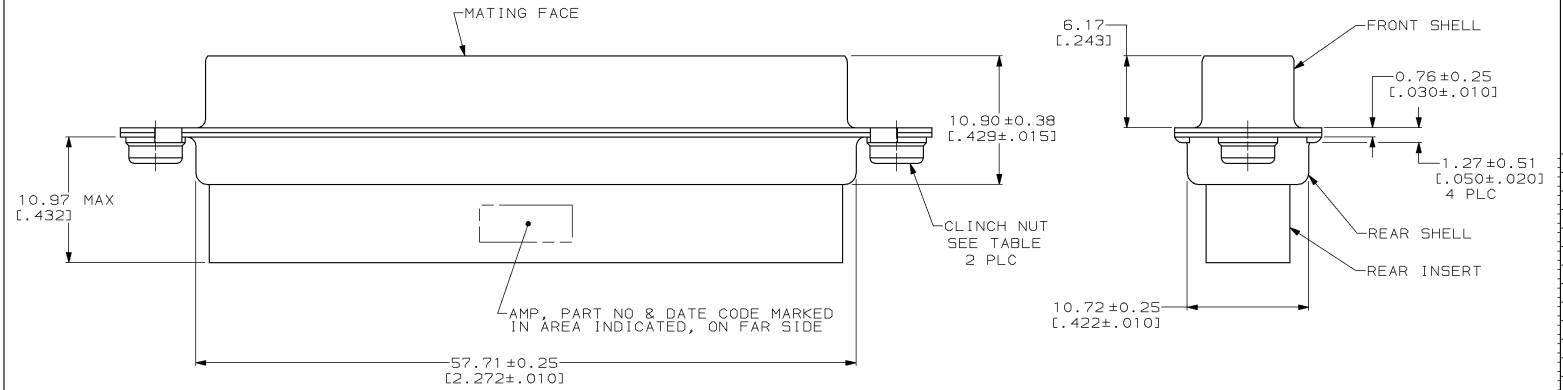
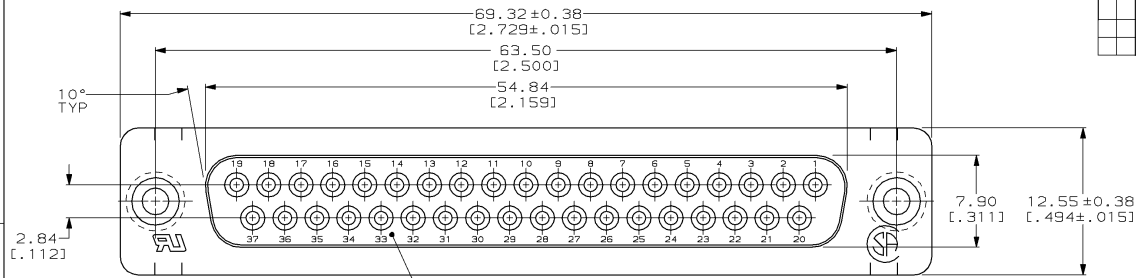


DRAWING MADE IN THIRD ANGLE PROJECTION
 THIS DRAWING IS UNPUBLISHED. RELEASED FOR PUBLICATION, 19
 © COPYRIGHT 19 BY AMP INCORPORATED. ALL INTERNATIONAL RIGHTS RESERVED.

LOC	DIST	P	F	ZONE	LTR	REVISIONS	DATE	APPD
BD	48				B	REDRAWN, ADDED -4 PER NPR 3518, REVISED PER ECN BD5132	5-14-91	-
					C	OBS -1 PER ECN BD6177	06/17/92	TS
					D	OBS -4 PER EC 0020-724-95	08 MAR 95	JCS



- CONNECTOR ACCEPTS SIZE 20 DF SOCKET CONTACTS, RETENTION TINES ARE AN INTEGRAL PART OF INSERT.
- NYLON OR POLYESTER, UL 94V-0 RATED, BLACK.
- CARBON STEEL PER ASTM A109.
- 5.08 μm [0.000200] MIN TIN OVER 2.54 μm [0.000100] MIN COPPER.
- .068 MAX DIA WIRE INSULATION SIZE IS RECOMMENDED FOR USE WITH THIS RECEPTACLE.
- CLEAR CHROMATE OVER ZINC.
- YELLOW CHROMATE OVER ZINC.
- 5.08 μm [0.000200] MIN ZINC, YELLOW CHROMATE.
- TIN PLATING PER MIL-T-10727; COPPER PLATING PER MIL-C-14550; ZINC PLATING PER ASTM B633, TYPE III, CLASS SC1.

OBSOLETE	△	△	M-3	207661-4
OBSOLETE	△	△	4-40	207661-3
OBSOLETE	△	△	4-40	207661-1
	SHELL FINISH	CLINCH NUT FINISH	CLINCH NUT THREAD TYPE	PART NO
DO NOT SCALE PRINT. UNLESS SPECIFIED DIMENSIONS IN mm [INCHES] TOLERANCES ON :	DR 5-14-91 W.G. LENKER	AMP AMP INCORPORATED Harrisburg, Pa. 17105 NAME RECEPTACLE CONNECTOR, SIZE 4, 37 POSN, WITH CLINCH NUTS, AMPLIMITE ®HDP		
2 PLC DEC ± 0.13 [0.005]	CHK 5-22-91 R. STONE			
3 PLC DEC ± "	APPD 5-22-91 M. KAPEZYNSKI	MATERIAL		
ANGLES ± 2°	APPD 5-22-91 J. ASSINI	MOLDED PARTS: △		
	PRODUCT SPEC	CLINCH NUTS & SHELLS: △		
	108-40025	APPLICATION SPEC		
FINISH △		SIZE	CAGE CODE	DRAWING NO
SEE TABLE		C	00779	207661
	WEIGHT -	SCALE	4:1	SHEET 1 OF 1

AMP 1471-6 REV 6-89
 08-MAR-95 12:45:01 amp39585 /home/srv0264/dsk01/dept4023/amp39585/edmod

CUSTOMER DRAWING

207661

A