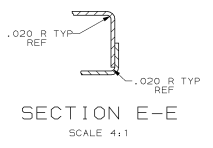
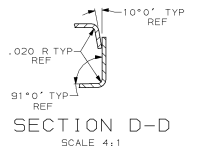
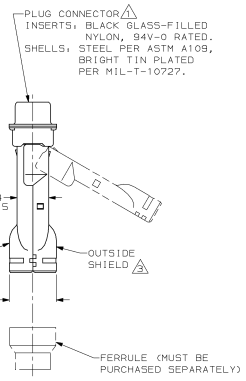
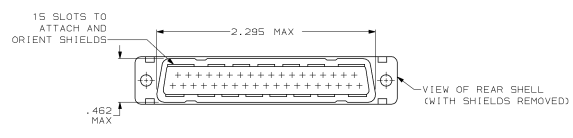
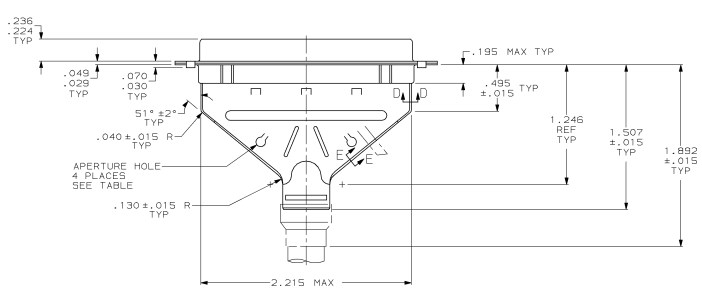
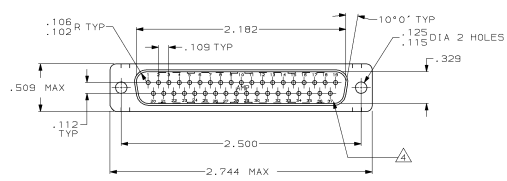


DRAWING MADE IN THIRD ANGLE PROJECTION
 THIS DRAWING IS UNPUBLISHED. RELEASED FOR PUBLICATION
 © COPYRIGHT 19 BY AMP INCORPORATED. ALL INTERNATIONAL RIGHTS RESERVED.

REVOLUTIONS		DATE	APP
A	REDRAWN	5-30-58	-
B	REV PER ECN 804457	12-22-58	BT
C	ADDED-2 NPS3889 WAS 91-5789-6-1	01-09-60	TMS
D	OBS -2 PER ECN 805856	01-17-60	TMS
E	REACTIVATED -2 PER NPS 3975	02-17-60	TMS
F	OBS -2 PER EC 0020-724-95	11-24-64	JCS



- ⚠ PLUG ACCEPTS SIZE 20 PIN CONTACTS (CONTACTS MUST BE ORDERED SEPARATELY).
- 2. ALL PARTS SHIPPED UNASSEMBLED, EACH PART INDIVIDUALLY BULK PACKED.
- ⚠ SHIELDS: MATERIAL-.020 THICK STEEL, TIN PLATED PER MIL-T-10727.
- ⚠ RAISED CAVITY IDENTIFICATION AND AMP TRADEMARK.

OBSOLETE	WITHOUT	747570-2
	WITH	747570-1
	APERTURE HOLE	PART NUMBER

DO NOT SCALE PRINT, UNLESS SPECIFIED. DIMENSIONS IN MILLIMETERS TO 3 PLACES ON 1/8 INCHES ± 0.30	DR 5-31-59 2 GALUCCI 86 CHK 5-31-59 J. MCELINTON	AMP AMP INCORPORATED 1000 W. 171st St. MILWAUKEE, WIS. 53215 KIT, PLUG, SHIELDING HARDWARE, SIZE 4, 37 POSN, NPS-20, AMPLIMITE™
MATERIAL SEE CALL OUT	APPR 5-4-59 BOB TAYLOR	
FINISH SEE CALL OUT	APPLIC SPEC -	
WEIGHT	SIZE D FSCR NO 00779 SCALE 2:1	
		DRAWING NO 747570 SHEET 1 OF 1

CUSTOMER DRAWING