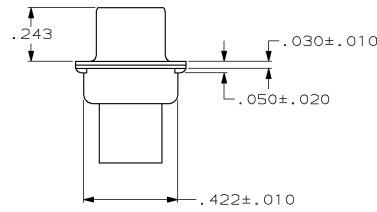
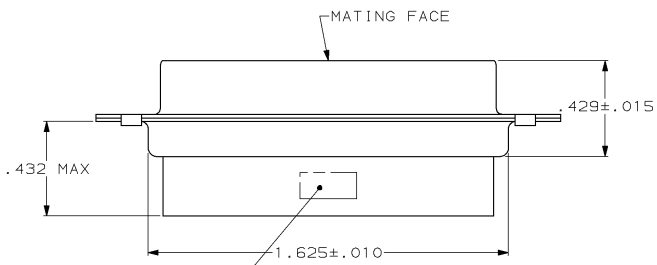
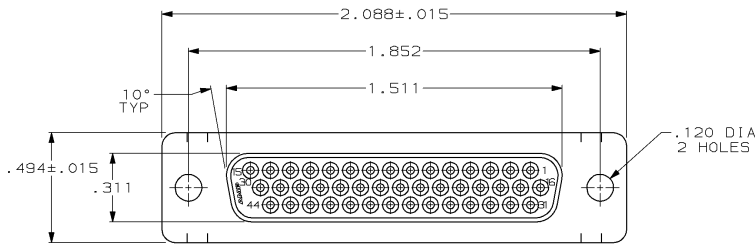


DRAWING MADE IN THIRD ANGLE PROJECTION  
 THIS DRAWING IS UNPUBLISHED. RELEASED FOR PUBLICATION  
 © COPYRIGHT 19 BY AMP INCORPORATED. ALL INTERNATIONAL RIGHTS RESERVED.

REVISIONS								
LOC	DIST	P	F	ZONE	LTR	DESCRIPTION	DATE	APPD
BD	39				0	REL WAS 87-4870-15	-	-



AMP, PART NO & DATE CODE, MARKED IN AREA INDICATED, ON FAR SIDE

- CONNECTOR ACCEPTS SIZE 22 DF SOCKET CONTACTS, RETENTION TINES ARE AN INTEGRAL PART OF INSERT.
- FLAME RETARDANT 94V-0 RATED GLASS FILLED NYLON, COLOR: BLACK.
- STEEL PER ASTM A109.
- TIN PLATED PER MIL-T-10727.

748567-1  
PART NO

DO NOT SCALE PRINT. UNLESS SPECIFIED DIMENSIONS IN INCHES TOLERANCES ON : 2 PLC DEC # - 3 PLC DEC # .005 ANGLES ± 2°	DR -	AMP INCORPORATED <small>Hamden, Conn. Pa. 17105</small>		
	CHK -			
	APPD -			
	PRODUCT SPEC -			
MATERIAL MOLDED PARTS: SHELLS:	APPD -	NAME		
FINISH SHELLS:	APPLICATION SPEC -	SIZE <b>C</b>	FSCM NO 00779	DRAWING NO 748567
	WEIGHT -	SCALE 3:1	SHEET 1 OF 1	

CUSTOMER DRAWING

AMP 1471-6 REV 3-87

748567

A