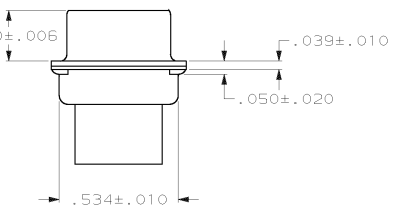
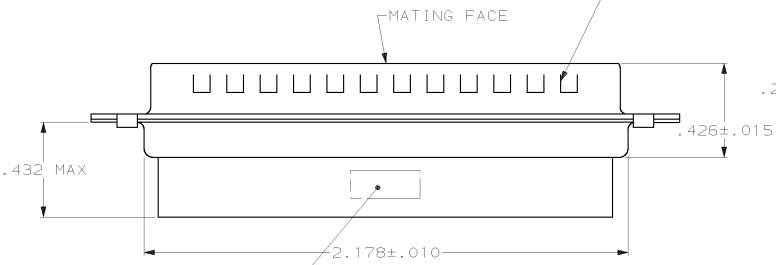
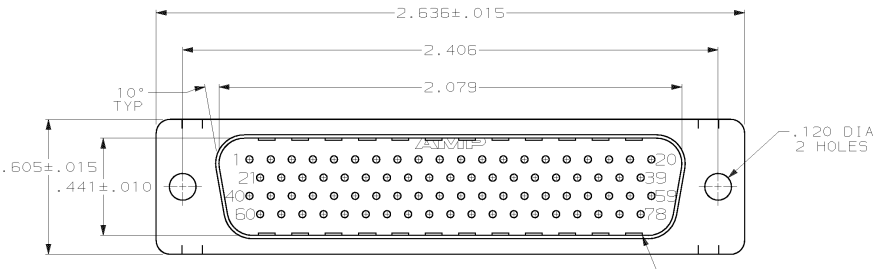


DRAWING MADE IN THIRD ANGLE PROJECTION
 THIS DRAWING IS UNPUBLISHED. RELEASED FOR PUBLICATION .19
 © COPYRIGHT 19 BY AMP INCORPORATED. ALL INTERNATIONAL RIGHTS RESERVED.

| M | | LOC | DIST | REVISIONS | | | | DATE | APPD |
|----|----|------|------|-------------|-------------------------|----------|------|------|------|
| P | F | ZONE | LTR | DESCRIPTION | | DATE | APPD | | |
| 19 | BD | 39 | | O | REL WAS 86-4870-3 | - | - | | |
| | | | | A | ADDED -2 PER NPR 2395 | 95/08/99 | - | | |
| | | | | B | REV PER EC QUID-0226-00 | 30AUG01 | - | | |



- CONNECTOR ACCEPTS SIZE 22 DF PIN CONTACTS, RETENTION TINES ARE AN INTEGRAL PART OF INSERT.
- FLAME RETARDANT 94V-0 RATED GLASS FILLED NYLON, COLOR: BLACK.
- STEEL PER ASTM A109.
- TIN PLATED PER MIL-T-10727.

| | | |
|------------------------|-------------------|----------|
| SUPERSEDED BY 748368-1 | NO | 748368-2 |
| | YES | 748368-1 |
| | GROUNDING INDENTS | PART NO |

| | | | |
|---|---|---|--------------------|
| DO NOT SCALE PRINT. UNLESS SPECIFIED DIMENSIONS IN INCHES. TOLERANCES ON: 2 PLC DEC ± .005 3 PLC DEC ± .005 ANGLES ± 2° | DR 3-27-87 C. RICHARD CHK 3-31-87 S. WELDON APPD 4-2-87 L. BREKOSKY APPD 4-2-87 V. KUMAR | AMP AMP INCORPORATED Murrillspburg, Pa. 17109 | |
| MATERIAL MOLDED PARTS: SHELLS: | PRODUCT SPEC - | NAME: PLUG CONNECTOR, SIZE 5, 78 POSN, AMPLIMITE®HDP-22 | |
| FINISH SHELLS: | APPLICATION SPEC - | SIZE: C | FSCM NO: 00779 |
| | WEIGHT - | SCALE: 3:1 | DRAWING NO: 748368 |
| | | | SHEET 1 OF 1 |

AMP 1471-6 REV 3-87
 08 MAY 1989 15:11:44 92165 -10020-01A22DLWPLITE-4.010P-04P4G-022

CUSTOMER DRAWING