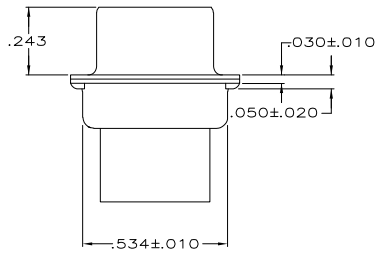
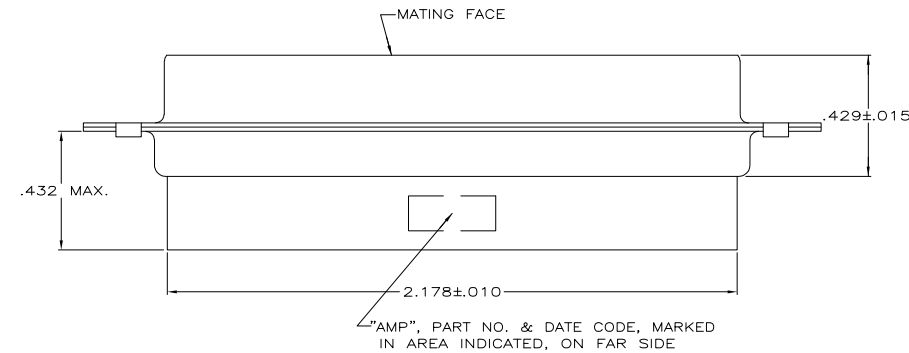


- CONNECTOR ACCEPTS SIZE 20 DF SOCKET CONTACTS, RETENTION TINES ARE AN INTEGRAL PART OF INSERT.
 - CONNECTOR COMPLIES WITH AMP SPEC. 108-40,005 WHERE APPLICABLE.
- △ FLAME RETARDANT 94V-0 RATED GLASS FILLED NYLON, COLOR: BLACK.
 - △ STEEL PER ASTM A109.
 - △ ZINC PLATED PER ASTM B633; TYPE II; CLASS SC1; YELLOW CHROMATE.
 - △ TIN PLATED PER MIL-T-10727.



SUPERSEDED BY 205211-1	SMALL PACK	△	.120	205211-5
OBSOLETE	STANDARD	△	.154	205211-4
OBSOLETE	STANDARD	△	.120	205211-2
OBSOLETE	STANDARD	△	.120	205211-1
	PACKAGING TYPE		SHELL FINISH	A
				PART NUMBER

THIS DRAWING IS A CONTROLLED DOCUMENT.

DESIGNED BY: S. WELDON	7-19-85		Tyco Electronics Corporation
CHKD BY: J. GERACE	7-28-85		Harrisburg, PA 17105-3608
DESIGNED BY: V. KUMAR	7-31-85	RECEPTACLE CONNECTOR, SIZE 5, 50 POS., AMPLIMITE™ HDP	
APPROVED BY: [Signature]		SIZE	A2
APPLICATION SPEC: [Blank]		CAGE CODE	00779
PRODUCT SPEC: [Blank]		DRAWING NO.	C-205211
WEIGHT: [Blank]		RESTRICTED TO:	
MATERIAL: [Blank]		CUSTOMER DRAWING	
MOLDED PARTS: [Blank]		SCALE	4:1
SHELLS: SEE TABLE		SHEET	1 of 1
		REV	H1

CUSTOMER DRAWING