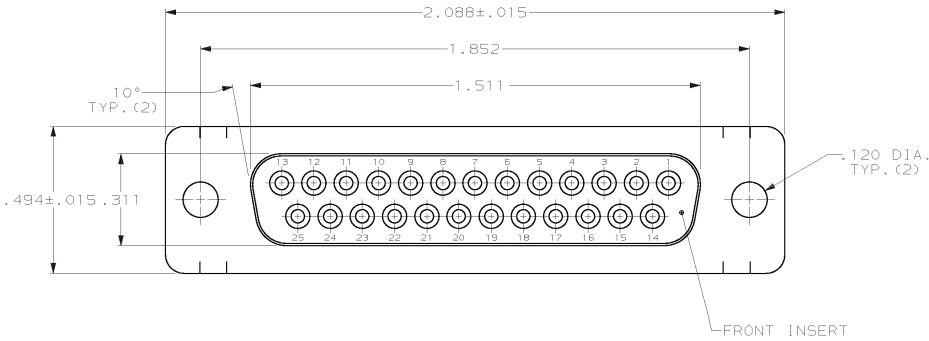
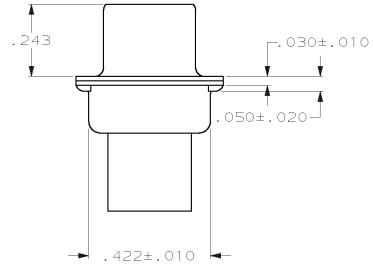
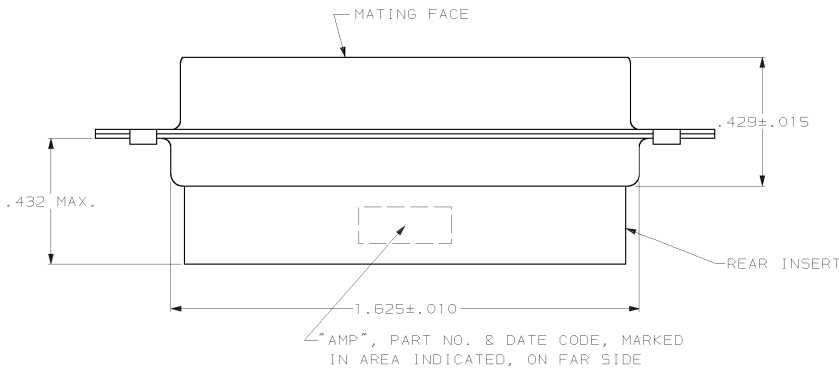


THIS DRAWING IS UNPUBLISHED. RELEASED FOR PUBLICATION, 19  
 © COPYRIGHT 19 BY AMP INCORPORATED. ALL INTERNATIONAL RIGHTS RESERVED.

LOC	DIST	P	F	ZONE	LTR	DESCRIPTION	DATE	APPO
BD	48				H1	ADDED -4 PER NPR 4837	06/14/93	SB
					J	OBSOLETE -3 AND REV PER EC	27 OCT 00	JK
						0U1D-0248-00		



- CONNECTOR ACCEPTS SIZE 20 DF SOCKET CONTACTS, RETENTION TINES ARE AN INTEGRAL PART OF INSERT.
- CONNECTOR COMPLIES WITH AMP SPEC. 108-40,005 WHERE APPLICABLE.
- FLAME RETARDANT 94V-0 RATED GLASS FILLED NYLON, COLOR; SEE TABLE.
- STEEL PER ASTM A109.
- ZINC PLATED PER ASTM B633, TYPE II, CLASS SC1, YELLOW CHROMATE.



OBSOLETE	SMALL PACK	BLACK	205207-4
	STANDARD	BLUE	205207-3
	STANDARD	BLACK	205207-1
	PACKAGING TYPE	INSERTS COLOR	PART NUMBER

DO NOT SCALE PRINT. UNLESS SPECIFIED DIMENSION IN INCHES. TOLERANCES ON : 2 PLC DEC ± .005 3 PLC DEC ± .005 ANGLES ± 2°		DR 7-19-85 5.WELDON	AMP Incorporated Harrisburg, PA 17105-3608	
MATERIAL INSERTS: SHELLS:		CHK 7-19-85 J.GERACE		
FINISH SHELLS:		APPD 7-29-85 L.BREKOSKY	NAME RECEPTACLE CONNECTOR, SIZE 3, 25 POS., AMPLIMITE™HDP	
WEIGHT -		APPLICATION SPEC -	SIZE C	CAGE CODE 00779
			DRAWING NO C-205207	SHEET 1 OF 1

THIS DRAWING IS A CONTROLLED DOCUMENT FOR AMP INCORPORATED. IT IS SUBJECT TO CHANGE AND THE CONTROLLING ENGINEERING ORGANIZATION SHOULD BE CONTACTED FOR THE LATEST REVISION.

CUSTOMER DRAWING