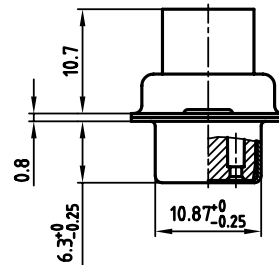
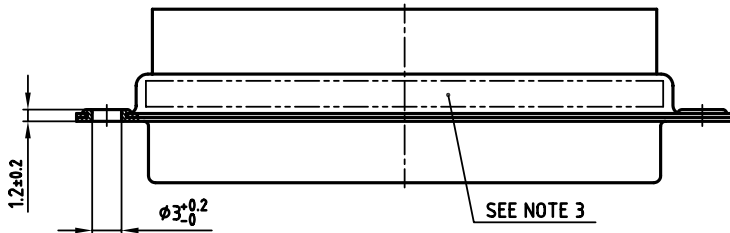
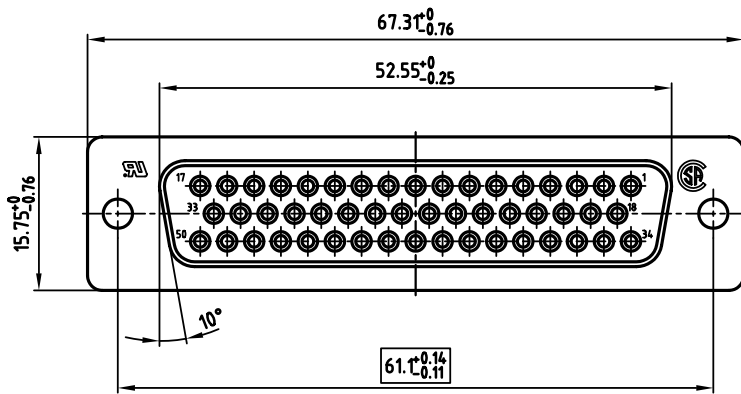


used for: D-SUB



NOTES:

1. METALSHELLS: STEEL; min. 320µ" TIN
2. INSULATORS: PBT GF UL 94 V-0, BLACK
3. CONNECTOR IS PART MARKED: 164X11809X CONEC ABC
4. = CHECK DIMENSION



| | |
|---|--------|
| APPROVAL # FREIGABE # DEBLOCAGE # AUTORIZACION # APPROVAL | |
| CUSTOMER APPROVAL DATE: | |
| NAME: | TITLE: |
| COMPANY NAME: | |
| APPROVAL # FREIGABE # DEBLOCAGE # AUTORIZACION # APPROVAL | |

THIS DRAWING MAY NOT BE COPIED OR REPRODUCED IN ANY WAY, AND MAY NOT BE PASSED ON TO A THIRD PARTY, WITHOUT WRITTEN PERMISSION. OWNERSHIP AND COPYRIGHT OF CONEC GmbH. DO NOT ALTER CAD DRAWING BY HAND

| rev. | description | date | name |
|------|-------------|------|------|
| | | | |
| | | | |
| | | | |
| | | | |
| | | | |
| | | | |
| | | | |
| | | | |
| | | | |
| | | | |

| | | |
|----------------|-----------|----------------|
| tolerance | | dim. in mm |
| 2005 | date | |
| drawn | 22.04. | Schmidt |
| appd. | 22.04. | Kühle |
| norm | DIN 41652 | |
| d-old | | |
| CONEC ® | | |

| | |
|--|---------|
| scale: 2:1 | |
| material: SEE NOTES | |
| title: D-SUB FEMALE CRIMP STYLE 50pos. | |
| dwg no: AutoCAD 2004 | DIN-A |
| 16K1A1386 | 3 |
| part no: 164X11809X | sh: 1/1 |