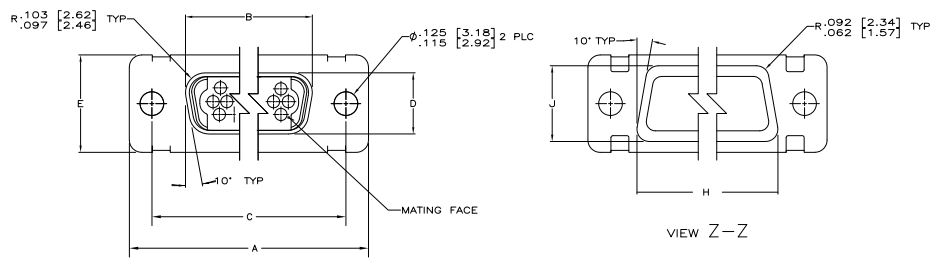
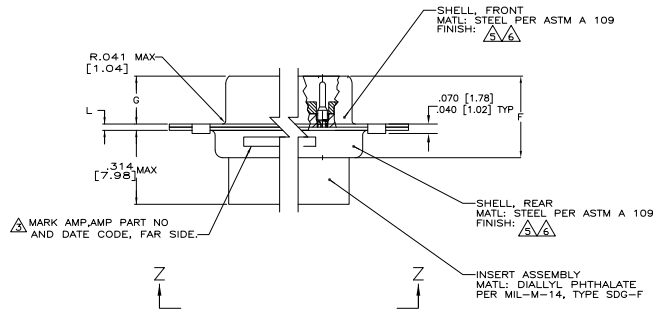


REV	DATE	DESCRIPTION	BY	CHK	APP
DF	DO				
E		REV PER EDC 10-004811			



1. DIMENSIONS AND TOLERANCES PER ANSI Y14.5M-1982.
  2. SEE SHEET 2 FOR INSERT ARRANGEMENTS.
  3. MARK WITH .047 [1.19]-.062 [1.57] HIGH CHARACTERS. FAR SIDE REFERS TO THE WIDE SIDE OF THE KEYSTONE. NEAR SIDE REFERS TO THE NARROW SIDE OF THE KEYSTONE. SIZE 1 AND 2 SHALL BE MARKED AS FOLLOWS:  
 A. "AMP" AND DATE CODE ON REAR SHELL, NEAR SIDE.  
 B. AMP PART NUMBER ON REAR SHELL, FAR SIDE.
  4. CONTACTS NOT INSTALLED IN CONNECTOR, SHOWN FOR REFERENCE ONLY.
- △ FINISH: CADMIUM PER QQ-P-416 OVER COPPER PER MIL-C-14550.  
 △ FINISH: ZINC PLATED PER ASTM-B-633 .000200-.000400 THK WITH SUPPLEMENTARY CHROMATE (Cr3+).



	.040 ± 1.02	.432 ± 10.97	.769 ± 19.53			.509 ± 12.93	.316 ± 8.03	.989 ± 25.12	.648 ± 16.46	1.228 ± 31.19	19	1	△	5-593210-1
	.020 [0.51]	.412 [10.46]	.749 [19.02]			.479 [12.17]	.306 [7.77]	.979 [24.87]	.638 [16.21]	1.198 [30.43]				
OBSOLETE	.544 ± 13.82	2.188 ± 55.58				.620 ± 15.75	.428 ± 10.87	2.411 ± 61.24	2.069 ± 52.55	2.650 ± 67.31	100	5	△	593210-5
OBSOLETE	.049 ± 1.24	.324 [8.31]	2.188 ± 55.07			.990 ± 14.99	.418 ± 10.62	2.401 ± 60.99	2.059 ± 52.30	2.620 ± 66.55				
OBSOLETE	.029 ± 0.74		2.282 ± 57.96					2.505 ± 63.63	2.164 ± 54.97	2.744 ± 69.70				
			2.262 ± 57.45					2.495 ± 63.37	2.154 ± 54.71	2.714 ± 68.94				
			1.635 ± 41.53	.248 ± 6.30	.439 ± 11.15			1.857 ± 47.17	1.516 ± 38.51	2.103 ± 53.42	52	3	△	593210-3
			1.615 ± 41.02	.238 ± 6.05	.419 ± 10.64			1.847 ± 46.91	1.508 ± 38.25	2.073 ± 52.65				
	.040 ± 1.02	.412 ± 10.46	1.035 ± 27.76			.509 ± 12.93	.316 ± 8.03	1.317 ± 33.45	.976 ± 24.79	1.556 ± 39.92	31	2	△	593210-2
	.020 ± 0.51		1.073 ± 27.25			.479 ± 12.17	.306 [7.77]	1.307 ± 33.20	.966 [24.54]	1.526 [38.76]				
			.769 ± 19.53					.989 ± 25.12	.648 ± 16.46	1.228 ± 31.19	19	1	△	593210-1
			.749 ± 19.02					.979 ± 24.87	.638 [16.21]	1.198 [30.43]				

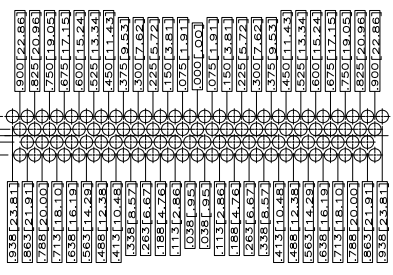
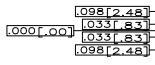
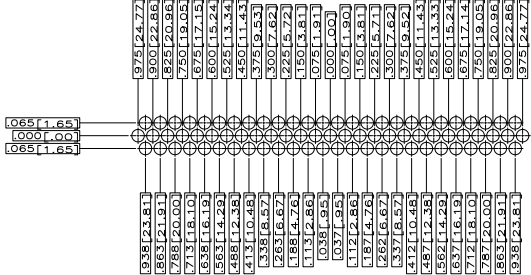
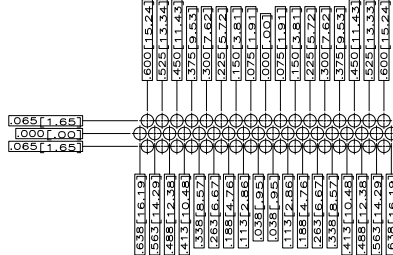
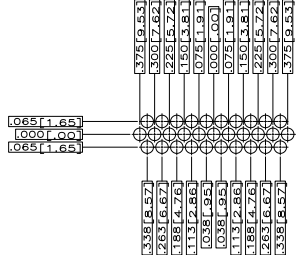
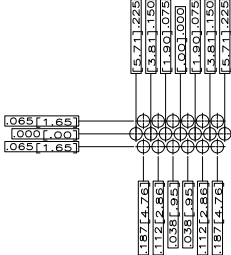
THIS DRAWING IS A CONTROLLED DOCUMENT. DATE: 03-27-88

INCHES: [ ]  
 DECIMALS: [ ]  
 FRACTIONS: [ ]  
 ANGLES: [ ]  
 DIMENSIONS: [ ]  
 SEE CALLOUTS: [ ]

TYS ELECTRONICS CORPORATION  
 HARRISBURG, PA 17105-3608  
 DRAWING NO: 1007799  
 PART NUMBER: 593210  
 SHELL SIZE: 4-1  
 DATE: 1 2 19 88

THIS DRAWING IS UNPUBLISHED. ALL RIGHTS RESERVED.  
 © 2005 TYS ELECTRONICS CORPORATION

REV	DATE	DESCRIPTION	BY	APP'D
1	03-27-05	REVISIONS		
2				
3				
4				
5				
6				
7				
8				



THIS DRAWING IS A CONTROLLED DOCUMENT. **TYS** Electronics Corporation, Harrisburg, PA 17105-3608

DESIGNER	DATE	REVISED BY	DATE
03-27-05	03-27-05		

MANUFACTURE DATE: 03-27-05

REVISIONS: 1. INSERT ARRANGEMENTS FOR DOUBLE DENSITY PLUG ASSY. SHELL SIZES 1 THRU 5.

CUSTOMER DRAWING: A1 00779 ©=093210

SIZE: 4.1 SHEET: 2 OF 2