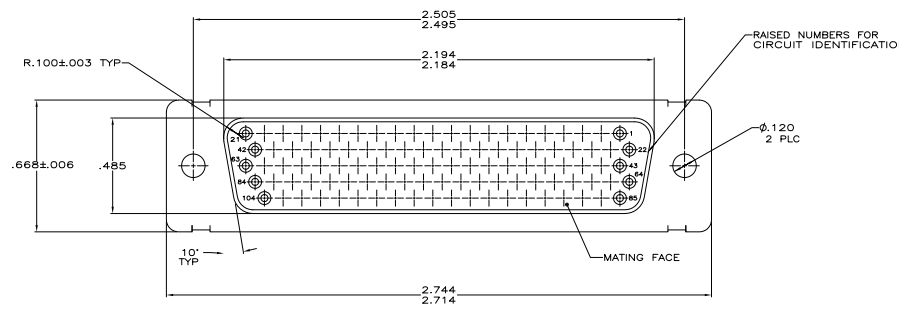
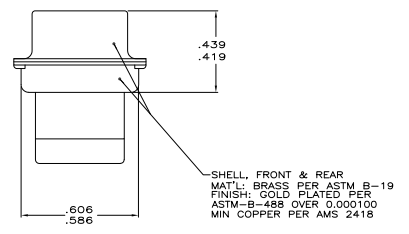
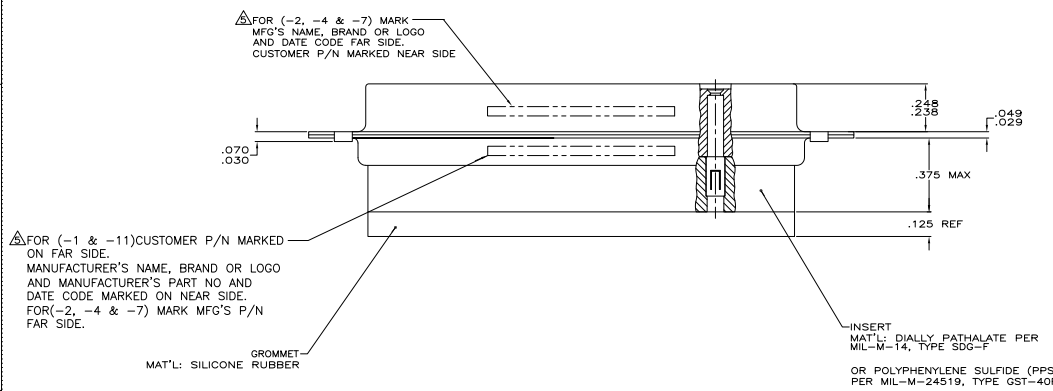


| REV | DATE | BY | CHK | APP | REVISIONS |
|-----|------|----|-----|-----|-----------------------|
| DF | DO | | | | NEW DRAWING |
| M | | | | | REV PER ECO 08-222807 |



- THIS RCPT. WILL MATE WITH ANY SIZE 6, 104 PDSN. PLUG IN AMPLIMITE SERIES.
 - CONNECTOR SUPPLIED WITHOUT CONTACTS; SHOWN FOR ILLUSTRATION ONLY.
 - BE-CU RETENTION CLIPS ARE INCLUDED IN INSERT AND INSTALLED WITH TINES POINTING TOWARDS MATING FACE.
 - OVERALL DIMENSIONS DO NOT INCLUDE RAISED CAVITY IDENTIFICATION.
- ⚠ MARKING FAR SIDE REFERS TO WIDE SIDE OF KEYSTONE.
 NEAR SIDE REFERS TO NARROW SIDE OF KEYSTONE.
 ⚠ 100% INSPECTION REQUIRED PER BOEING 1B01:
 A. VISUAL
 B. DUV
 C. IR
 ⚠ CUSTOMER REQUIRES SINGLE LOT DATE CODE.
 ⚠ SPECIAL REQUIREMENTS:
 A. TEST TWO CONNECTORS PER LOT FOR COMPLIANCE TO GROMMET PEEL STRENGTH REQUIREMENTS.
 B. TEST ALL CIRCUIT CAVITIES FOR MISALIGNMENT OR EXCESSIVE ADHESIVE.



| REMARKS | CUSTOMER PART NO. | PART NO. |
|---------|-------------------|------------|
| ⚠ | 1B01-030RHW | 1-211672-1 |
| ⚠ | - | 211672-7 |
| | 2A065-024V-001 | 211672-4 |
| | 1B01-030 | 211672-2 |
| | | 211672-1 |

| | | | | |
|--|---|--|---|---|
| THIS DRAWING IS A CONTROLLED DOCUMENT. | | DR. KAISER | 3-11-04 | Tyco Electronics Corporation Harrisburg, PA 17105-2608 |
| DESIGNER | | JL | 3-28-04 | |
| CHECKED | | CH | 3-28-04 | |
| DIMENSIONS DECIMALS FRACTIONS ANGLES HOLE POSITION HOLE SIZE TOLERANCES FINISHES SURFACE TREATMENT SEE CALLOUTS | UNLESS OTHERWISE SPECIFIED: DIMENSIONS IN INCHES DECIMALS FRACTIONS ANGLES HOLE POSITION HOLE SIZE TOLERANCES FINISHES SURFACE TREATMENT SEE CALLOUTS | MATERIALS UNLESS OTHERWISE SPECIFIED: DIMENSIONS IN INCHES DECIMALS FRACTIONS ANGLES HOLE POSITION HOLE SIZE TOLERANCES FINISHES SURFACE TREATMENT SEE CALLOUTS | DATE 00779 100779 CUSTOMER DRAWING | RCPT. ASSY, AMPLIMITE, 104 PDSN, SIDE B, SERIES 90, NON-MAGNETIC, SPECIAL WITH GROMMET 100779 211672 4:1 1 M |