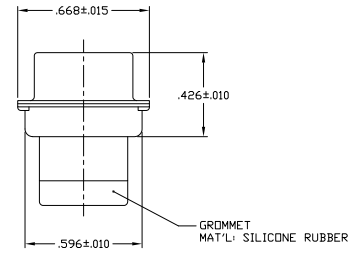
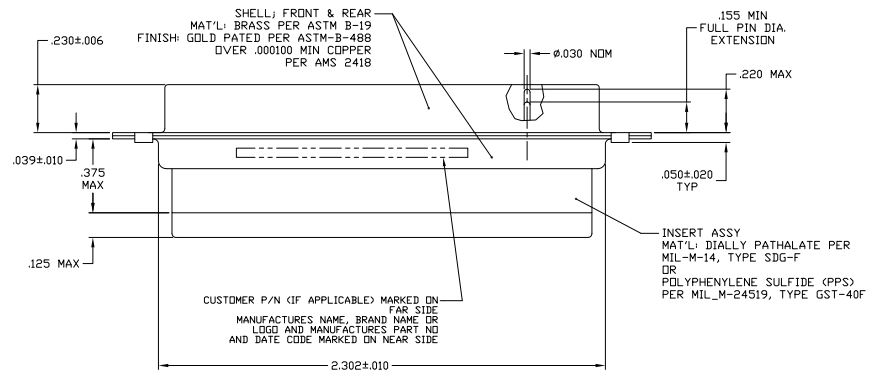
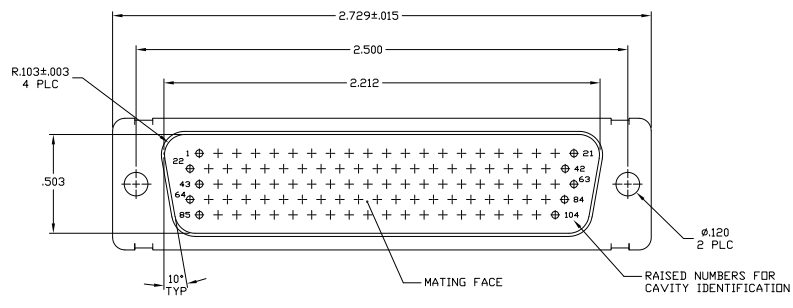


THIS DRAWING IS UNPUBLISHED. REVISIONS FOR PUBLICATION. ALL DIMENSIONS UNLESS OTHERWISE SPECIFIED ARE IN INCHES.

| REV | DATE | DESCRIPTION | BY | CHK | APP |
|-----|------|-------------|----|-----|-----|
| 1 | | | | | |
| 2 | | | | | |
| 3 | | | | | |
| 4 | | | | | |
| 5 | | | | | |
| 6 | | | | | |
| 7 | | | | | |
| 8 | | | | | |

- THIS PLUG WILL MATE TO ANY SIZE 6, 104 POSITION RECEPTACLE IN THE AMPLIMITE SERIES.
- CONNECTOR SUPPLIED WITHOUT CONTACTS, SHOWN FOR ILLUSTRATION ONLY.
- BE-CU RETENTION CLIPS ARE INCLUDED AND INSTALLED WITH TINES POINTING TOWARDS MATING FACE.
- OVERALL DIMENSIONS DO NOT INCLUDE RAISED CAVITY IDENTIFICATION.
- MARKING ON FAR SIDE REFERS TO WIDE SIDE OF KEYSTONE. NEAR SIDE REFERS TO NARROW SIDE OF KEYSTONE.

- ⚠ 100% INSPECTION REQUIRED PER BOEING 1B01:
 - A. VISUAL
 - B. D'AV
 - C. IR
- ⚠ CUSTOMER REQUIRES SINGLE LOT DATE CODE.
- Ⓜ SPECIAL REQUIREMENTS:
 - A. TEST TWO CONNECTORS PER LOT FOR COMPLIANCE TO GROMMET PEEL STRENGTH REQUIREMENTS
 - B. TEST ALL CIRCUIT CAVITIES FOR MISALIGNMENT OR EXCESSIVE ADHESIVE



| | | | |
|---------|---------------------|----------------|-----------------|
| ⚠ | 1B01-036PHW | 211678-1 | 1-211678-1 |
| ⚠ | | 211678-4 | 211678-7 |
| ⚠ | 1B01-036 | 211678-1 | 211678-6 |
| ⚠ | | | 211678-5 |
| ⚠ | | 211678-4 | 211678-4 |
| ⚠ | | 211678-3 | 211678-3 |
| ⚠ | 2A065-018V-001 | 211678-2 | 211678-2 |
| ⚠ | 1B01-036 | 211678-1 | 211678-1 |
| REMARKS | MARKED CUSTOMER P/N | MARKED MFG P/N | ASSEMBLY NUMBER |

THIS DRAWING IS A CONTROLLED DOCUMENT. DATE: 8-17-06. THIS DRAWING IS THE PROPERTY OF Tyco Electronics Corporation. HARRISBURG, PA 17105-3008.

DESIGNER: J. THOMAS (8-17-06) CHECKED: J. WALTERS (8-17-06) DRAWN: J. WALTERS (8-17-06) DATE: 8-17-06

DESCRIPTION: PLUG ASSY, AMPLIMITE, 104 POSN, SIZE 6, SERIES 90, NON-MAG., W/GROMMET

SIZE: ONE SIZE DRAWING NO: 100779 (C) 211678

REVISED TO: NONE TO

DATE: 8-17-06

REV: 1

BY: J. WALTERS

APP: K