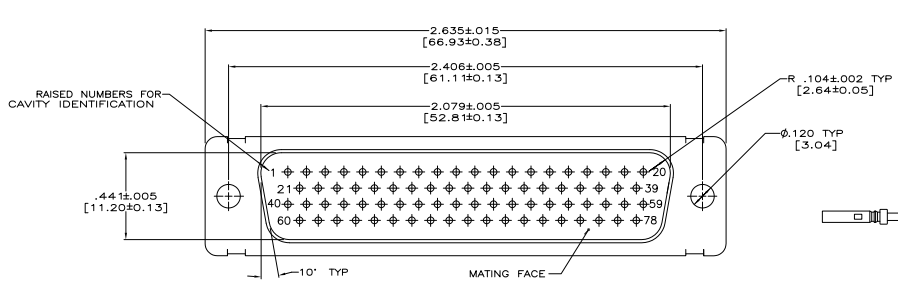
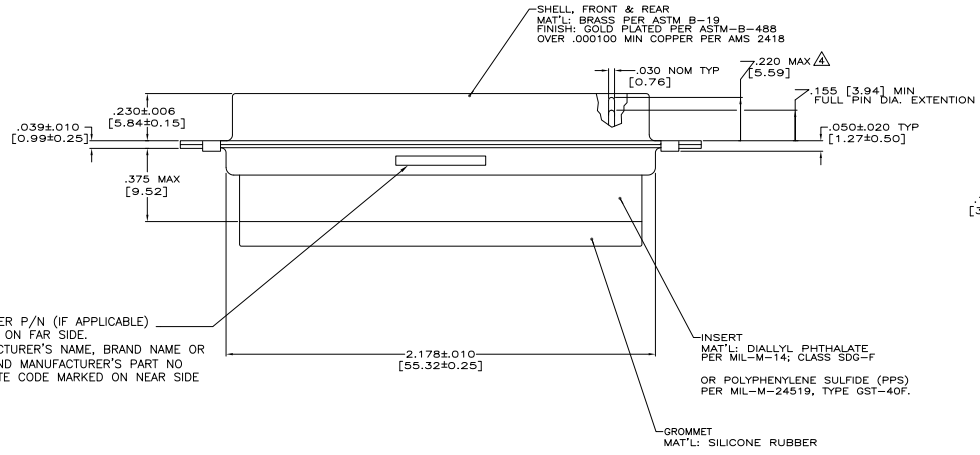


REV	DATE	BY	CHKD	REVISIONS
DF	DO			REVISIONS
				DATE
				BY
				REV PER ECD 08-020669
				30SEP08 PK BW



- THIS PLUG WILL MATE WITH ANY SIZE 5, 78 POSN. RECEPTACLE IN AMPLIMITE SERIES.
- OVERALL DIMENSIONS DO NOT INCLUDE RAISED CAVITY IDENTIFICATION.
- BE-CU RETENTION CLIPS ARE INCLUDED IN INSERT AND INSTALLED WITH TINES POINTING TOWARDS MATING FACE.
- CONNECTOR SUPPLIED WITHOUT CONTACTS. SHOWN FOR ILLUSTRATION ONLY.
- MARKING ON FAR SIDE REFERS TO WIDE SIDE OF KEYSTONE. NEAR SIDE REFERS TO NARROW SIDE OF KEYSTONE.
- PIN CONTACTS INCLUDED IN KIT 211677-7.
- 100% INSPECTION REQUIRED PER BOEING 1B01:
 - A. VISUAL
 - B. DWV
 - C. IR
- CUSTOMER REQUIRES SINGLE LOT DATE CODE.
- SPECIAL REQUIREMENTS:
 - A. TEST TWO CONNECTORS PER LOT FOR COMPLIANCE TO GROMMET PEEL STRENGTH REQUIREMENTS.
 - B. TEST ALL CIRCUIT CAVITIES FOR MISALIGNMENT OR EXCESSIVE ADHESIVE.

PIN CONTACT
 MATERIAL: BRASS
 PLATING: GOLD PER MIL-Q-45204
 OVER COPPER PER MIL-C-14550.



CUSTOMER P/N (IF APPLICABLE)
 MARKED ON FAR SIDE.
 MANUFACTURER'S NAME, BRAND NAME OR
 LOGO AND MANUFACTURER'S PART NO
 AND DATE CODE MARKED ON NEAR SIDE

SHELL, FRONT & REAR
 MAT'L: BRASS PER ASTM B-19
 FINISH: GOLD PLATED PER ASTM-B-488
 OVER .000100 MIN COPPER PER AMS 2418

INSERT
 MAT'L: DIALLYL PHTHALATE
 PER MIL-M-14; CLASS SDG-F
 OR POLYPHENYLENE SULFIDE (PPS)
 PER MIL-M-24519, TYPE GST-40F.

GROMMET
 MAT'L: SILICONE RUBBER

REMARKS	CUSTOMER PART NO.	PART NO.
△ △	1B01-035PHW	1-211677-1
△ △	B010648-0009	211677-7
△ △	-	211677-4
△ △ △ △	2A065-017V-001	211677-2
△ △	1B01-035	211677-1

THIS DRAWING IS A CONTROLLED DOCUMENT.

DESIGNED BY	DATE	BY	DATE
DR	12/04/01	DM	12/04/01
CHECKED BY	DATE	BY	DATE
DM	12/04/01	DM	12/04/01
APPROVED BY	DATE	BY	DATE
DM	12/04/01	DM	12/04/01

PLUG ASS'Y, AMPLIMITE, 78 POSN.,
 SIZE 5, SERIES 90, NON-MAGNETIC
 WITH GROMMET

REV: ONE COPY DRAWING NO. A100779G=211677

CUSTOMER DRAWING