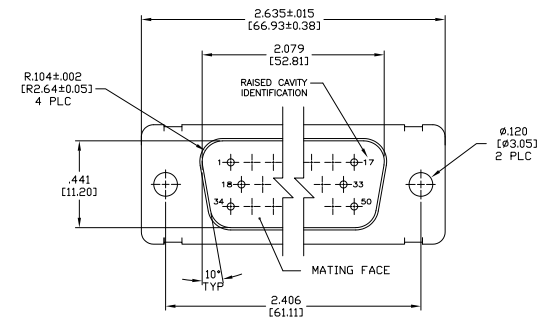
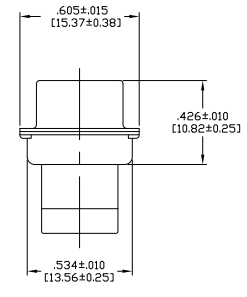
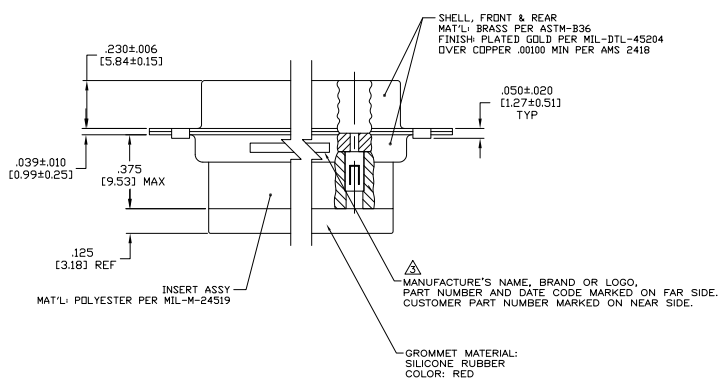


REV	DATE	DESCRIPTION	BY	APP
1				
2				
3				
4				
5				
6				
7				
8				



1. THIS CONNECTOR ASSEMBLY IS SUPPLIED WITH Be Cu CONTACT RETENTION CLIPS INSTALLED IN THE INSERT ASSEMBLY.
 2. THIS CONNECTOR ASSEMBLY MATES WITH ANY PLUG CONNECTOR WITH THE SAME INSERT ARRANGEMENT AND DIMENSIONAL REQUIREMENTS PER MIL-C-24308.
 3. MARKED WITH .047 [1.19]-062 [1.57] HIGH CHARACTERS. FAR SIDE REFERS TO THE WIDE SIDE OF THE KEYSTONE. NEAR SIDE REFERS TO THE NARROW SIDE OF THE KEYSTONE.
 4. MAXIMUM WIRE INSULATION TO BE USED WITH THIS CONNECTOR ASSEMBLY IS .054 [1.37] DIAMETER.
- ⚠ SPECIAL REQUIREMENTS PER BOEING 1A01 DOCUMENT.
 ⚠ BUILT TO ORDER, NO INVENTORY OF THIS PART NUMBER IS TO BE KEPT. SINGLE LOT DATE CODE REQUIRED.



REV	DATE	DESCRIPTION	BY	APP
1				
2				
3				
4				
5				
6				
7				
8				

REVISIONS	DESCRIPTION	DATE	BY	APP
1		4-3-09	CT	RL
2	REV PER ECO-08-028122			

REVISIONS	CUSTOMER MARKING	PART NUMBER
1	1A01-030PHW	1-211642-1
2	A70323-12013-030	211642-8
3	---	211642-4
4	1A01-030PHA	211642-1

THIS DRAWING IS A CONTROLLED DOCUMENT.		DATE	BY	APP
DESIGNED	DATE	1-3-09		
DRAWN	DATE	1-3-09		
CHECKED	DATE	1-3-09		
APPROVED	DATE	1-3-09		

REV	DATE	DESCRIPTION	BY	APP
1				
2				
3				
4				
5				
6				
7				
8				