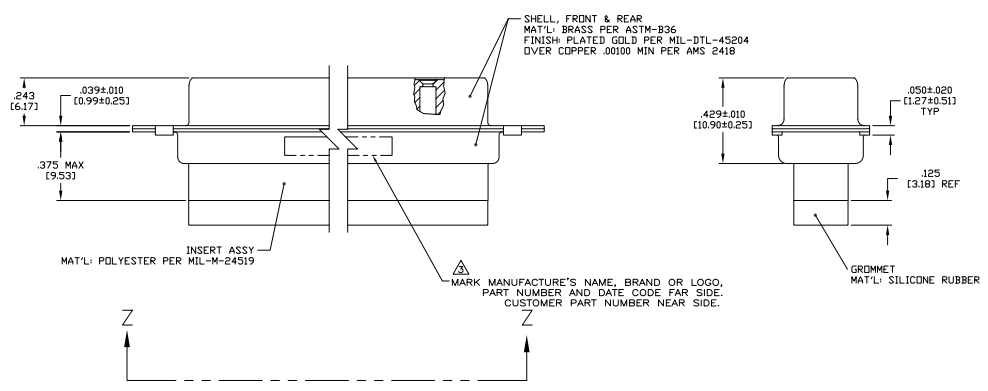
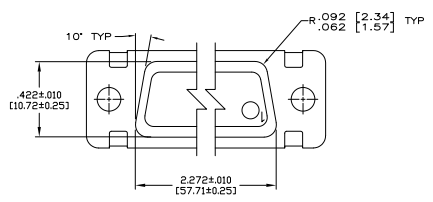
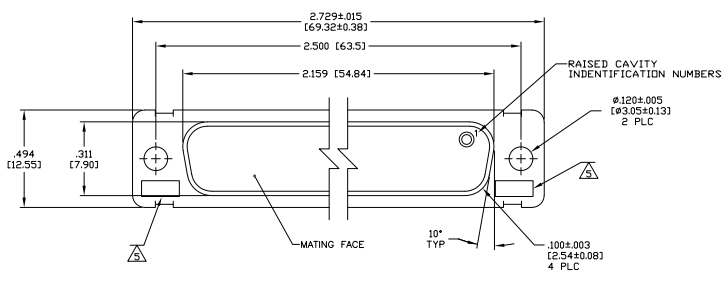


REV	DATE	DESCRIPTION	BY	CHK	APP
1					
2					
3					
4					
5					
6					
7					
8					



1. THIS CONNECTOR ASSEMBLY IS SUPPLIED WITH Be Cu CONTACT RETENTION CLIPS INSTALLED IN THE INSERT ASSEMBLY.
  2. THIS CONNECTOR ASSEMBLY MATES WITH ANY PLUG CONNECTOR WITH THE SAME INSERT ARRANGEMENT AND DIMENSIONAL REQUIREMENTS PER MIL-C-24308.
  3. MARKED WITH .047 (1.19)-.062 (1.57) HIGH CHARACTERS. FAR SIDE REFERS TO THE WIDE SIDE OF THE KEYSTONE. NEAR SIDE REFERS TO THE NARROW SIDE OF THE KEYSTONE.
  4. MAXIMUM WIRE INSULATION TO BE USED WITH THIS CONNECTOR ASSEMBLY IS .068 (1.73) DIAMETER.
- ⚠ UL/CSA DESIGNATION MARKED IN THIS AREA.  
 ⚠ SPECIAL REQUIREMENTS PER BOEING IAGI DOCUMENT.  
 ⚠ BUILT TO ORDER, NO INVENTORY OF THIS PART NUMBER IS TO BE KEPT. SINGLE LOT DATE CODE REQUIRED.

⚠	1A01-O24RHW	1-211636-1
⚠	---	211636-4
⚠	1A01-O24RHA	211636-1
REMARKS	CUSTOMER MARKING	PART NUMBER

THIS DRAWING IS A CONTROLLED DOCUMENT. DATE: 2-28-07

DESIGNED BY: J. MILLER DATE: 2-27-07  
 CHECKED BY: J. MILLER DATE: 2-27-07  
 DRAWN BY: J. MILLER DATE: 2-27-07  
 APPROVED BY: J. MILLER DATE: 2-27-07

REVISIONS: 1.000779 (Q)=211636

CUSTOMER DRAWING DATE: 4-1 SHEET: 1 OF 1