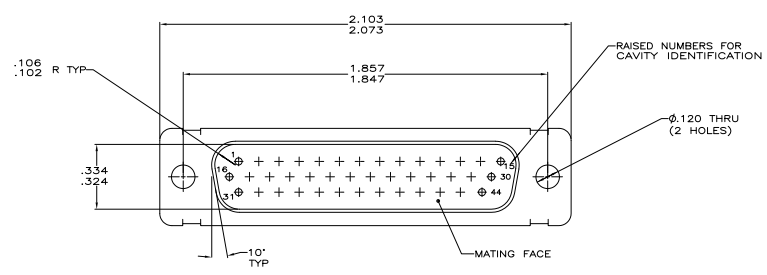
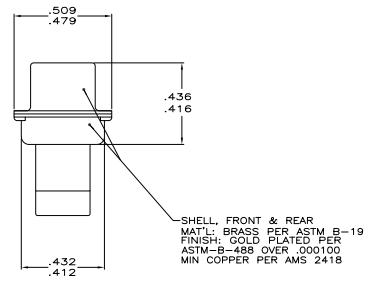
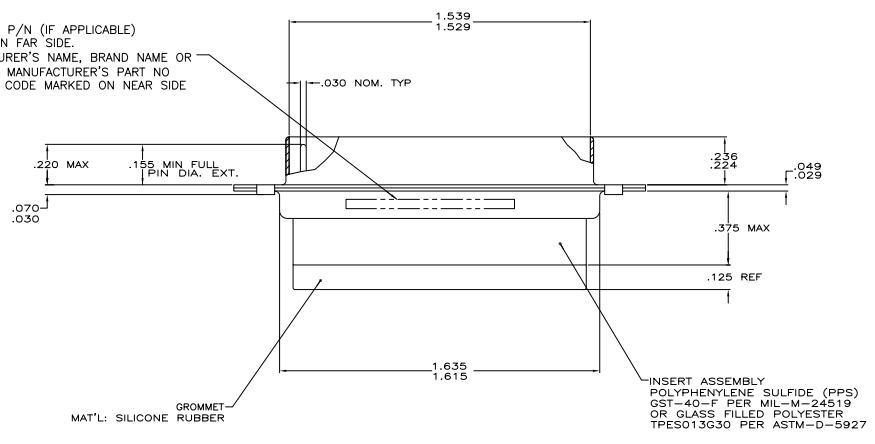


REV	DATE	DESCRIPTION	BY	CHK
DF	DO			
J		REV PER ECO 08-02669		



- THIS PLUG WILL MATE WITH ANY SIZE 3, 44 POSN. RCPT. IN AMPLIMITE SERIES.
 - OVERALL DIMENSIONS DO NOT INCLUDE RAISED CAVITY IDENTIFICATION.
 - BE-CU RETENTION CLIPS ARE INCLUDED AND INSTALLED WITH TINES POINTING TOWARDS MATING FACE.
 - CONNECTOR SUPPLIED WITHOUT CONTACTS; SHOWN FOR ILLUSTRATION ONLY.
 - MARKING FAR SIDE REFERS TO WIDE SIDE OF KEYSTONE. NEAR SIDE REFERS TO NARROW SIDE OF KEYSTONE.
- ⚠️ 100% INSPECTION REQUIRED PER BOEING 1B01:
 A. VISUAL
 B. DWV
 C. IR
- ⚠️ CUSTOMER REQUIRES SINGLE LOT DATE CODE.
 ⚠️ SPECIAL REQUIREMENTS:
 A. TEST TWO CONNECTORS PER LOT FOR COMPLIANCE TO GROMMET PEEL STRENGTH REQUIREMENTS.
 B. TEST ALL CIRCUIT CAVITIES FOR MISALIGNMENT OR EXCESSIVE ADHESIVE.

CUSTOMER P/N (IF APPLICABLE)
 MARKED ON FAR SIDE.
 MANUFACTURER'S NAME, BRAND NAME OR
 LOGO AND MANUFACTURER'S PART NO
 AND DATE CODE MARKED ON NEAR SIDE



⚠️	⚠️	1B01-033PHW	1-211675-1
			211675-4
⚠️	⚠️	2A065-015V	211675-2
⚠️	⚠️	1B01-033	211675-1
REMARKS	CUSTOMER PART NO.	PART NO.	

THIS DRAWING IS A CONTROLLED DOCUMENT.

IN: KASPER 2-11-24
 BY: CH 3-28-24
 DATE: 3-28-24

THIS DRAWING IS A CONTROLLED DOCUMENT.
 NON-REPRODUCTION PERMITTED.
 ALL RIGHTS RESERVED.

TITLES: PLUG ASSY, AMPLIMITE, 44
 POSN, SIZE 3, SERIES 90,
 NON-MAGNETIC, SPECIAL WITH GROMMET

TOLERANCES UNLESS OTHERWISE SPECIFIED:
 DIMENSIONS IN INCHES: FRACTIONS DECIMALS
 .005 .010 .015 .020 .030 .040 .050 .060 .070 .080 .090 .100 .125 .150 .200 .250 .300 .375 .500 .625 .750 .875 1.000
 .005 .010 .015 .020 .030 .040 .050 .060 .070 .080 .090 .100 .125 .150 .200 .250 .300 .375 .500 .625 .750 .875 1.000

CUSTOMER DRAWING
 1007791G=211675
 SHEET 4-1 OF 1