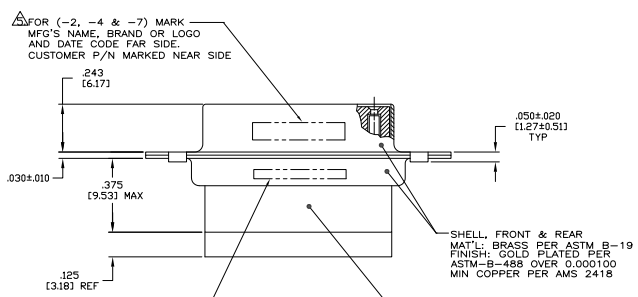
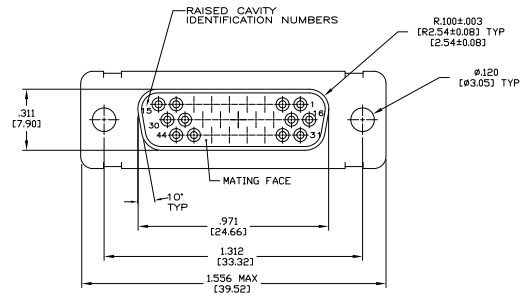


REV	DATE	DESCRIPTION	BY	CHK	APP
DF	DO				
K		REV PER ECO 08-022807			170CT08 PKJ BW

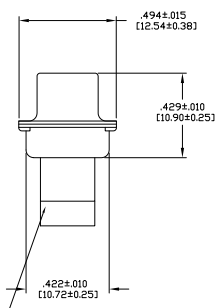
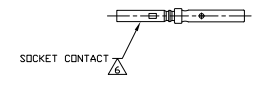


FOR (-2, -4 & -7) MARK MFG'S NAME, BRAND OR LOGO AND DATE CODE FAR SIDE. CUSTOMER P/N MARKED NEAR SIDE.

FOR (-1 & -11) CUSTOMER P/N MARKED ON FAR SIDE. MANUFACTURER'S NAME, BRAND OR LOGO AND MANUFACTURER'S PART NO AND DATE CODE MARKED ON NEAR SIDE. FOR (-2, -4 & -7) MARK MFG'S P/N FAR SIDE.

INSERT ASSEMBLY POLYPHENYLENE SULFIDE (PPS) GSI-40-F PER MIL-M-24519 OR GLASS FILLED POLYESTER TPES019G30 PER ASTM-D-5927

- THIS RECEPTACLE WILL MATE WITH ANY 26 PDSN, SIZE 2 PLUG IN AMPLIMITE SERIES.
  - BE-CU RETENTION CLIPS ARE INCLUDED IN INSERT AND INSTALLED WITH TINES POINTING TOWARDS MATING FACE.
  - CONNECTOR SUPPLIED WITHOUT CONTACTS, SHOWN FOR ILLUSTRATION ONLY. SEE NOTE 6.
  - OVERALL DIMENSIONS DO NOT INCLUDE RAISED CAVITY IDENTIFICATION.
- MARKING FAR SIDE REFERS TO WIDE SIDE OF KEYSTONE. NEAR SIDE REFERS TO NARROW SIDE OF KEYSTONE.
- SDCKET CONTACT (QTY=26) INCLUDED IN KIT. (-7 ONLY)
- 100% INSPECTION REQUIRED PER BOEING 1B01:  
 A. VISUAL  
 B. DWV  
 C. IR
- CUSTOMER REQUIRES SINGLE LOT DATE CODE.
- SPECIAL REQUIREMENTS:  
 A. TEST TWO CONNECTORS PER LOT FOR COMPLIANCE TO GROMMET PEEL STRENGTH REQUIREMENTS.  
 B. TEST ALL CIRCUIT CAVITIES FOR MISALIGNMENT OR EXCESSIVE ADHESIVE.



GROMMET MATERIAL: SILICONE RUBBER

REMARKS	DESCRIPTION	PART NO
-	SAME AS -1 EXCEPT CUSTOMER PART NO. 1B01-026RHW MARKED	1-211668-1
-	SAME AS -1 EXCEPT FDRD PART NO. B010648-0004 MARKED	211668-7
-	SAME AS -1 EXCEPT NO CUSTOMER PART NO MARKED	211668-4
-	SAME AS -1 EXCEPT WITH TRW PART NUMBER 2A065-020V-001 MARKED	211668-2
-	AS SHOWN WITH HUGHES PART NO 1B01-026 MARKED	211668-1

THIS DRAWING IS A CONTROLLED DOCUMENT.		REV. 1	DATE	170CT08	BY	PKJ	CHK	BW
DESIGNED BY	REVISIONS	DATE	DESCRIPTION	BY	CHK	APP		
INCHES (mm)								
1:1								
SEE CALLOUTS								
CUSTOMER DRAWING		REV. 1	DATE	170CT08	BY	PKJ	CHK	BW