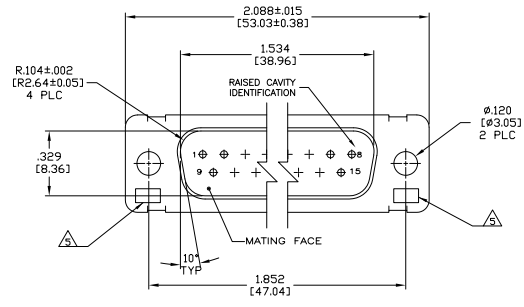
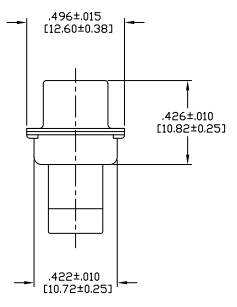
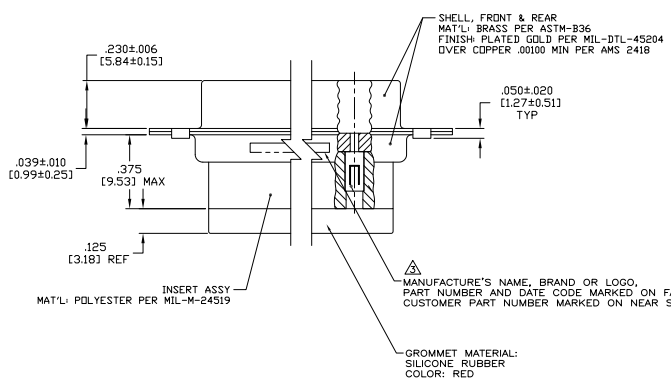


REV	DATE	DESCRIPTION	BY	CHK	APP
1					
2					
3					
4					
5					
6					
7					
8					



1. THIS CONNECTOR ASSEMBLY IS SUPPLIED WITH Be Cu CONTACT RETENTION CLIPS INSTALLED IN THE INSERT ASSEMBLY.
 2. THIS CONNECTOR ASSEMBLY MATES WITH ANY PLUG CONNECTOR WITH THE SAME INSERT ARRANGEMENT AND DIMENSIONAL REQUIREMENTS PER MIL-C-24308.
 3. MARKED WITH .047 (1.19)-062 (1.57) HIGH CHARACTERS. FAR SIDE REFERS TO THE WIDE SIDE OF THE KEYSTONE. NEAR SIDE REFERS TO THE NARROW SIDE OF THE KEYSTONE.
 4. MAXIMUM WIRE INSULATION TO BE USED WITH THIS CONNECTOR ASSEMBLY IS .068 (1.73) DIAMETER.
- ▲ UL/CSA DESIGNATION MARKED IN THIS AREA.
 ▲ SPECIAL REQUIREMENTS PER BOEING 1A01 DOCUMENT.
 ▲ BUILT TO ORDER, NO INVENTORY OF THIS PART NUMBER IS TO BE KEPT. SINGLE LOT DATE CODE REQUIRED.



REVISION	REVISION	DATE	BY	CHK	APP
1	1A01-02BPHW	1-211640-1			
2	---	---			
3	2A014-033V-001	211640-2			
4	1A01-02BPHA	211640-1			

THIS DRAWING IS A CONTROLLED DOCUMENT. DATE: 1-3-09
 DRAWN BY: J. THOMAS
 CHECKED BY: J. THOMAS
 ENGINEER: J. THOMAS
 DATE: 1-3-09
 PROJECT: PLUG ASSY, AMP/1MTE.25 POSN. SIZE 3, SERIES 109 WITH GROMMET, NON-MAGNETIC
 SIZE: A1
 DRAWING NO: 00779
 PART NO: 211640
 SHEET: 4.1 OF 1