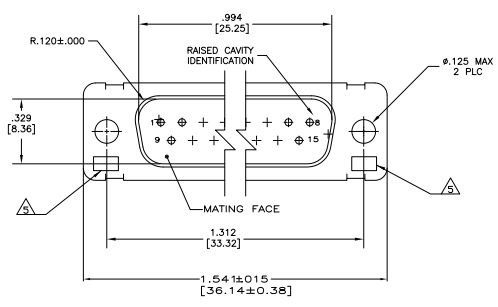
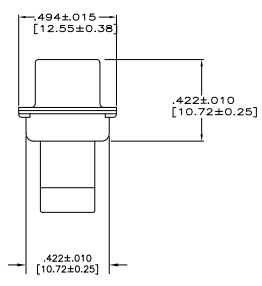
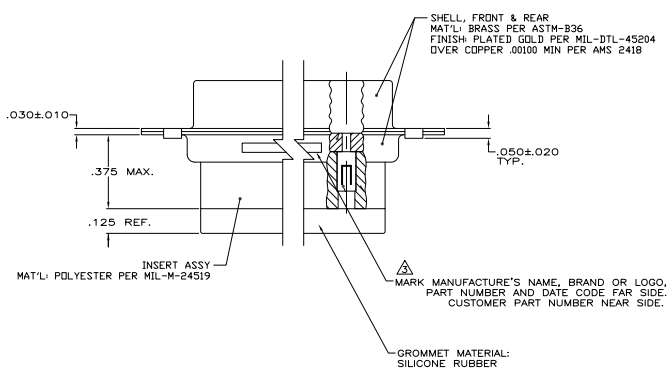


| REV | DATE | DESCRIPTION | BY | CHK | APP |
|-----|------|----------------------|----|-----|-----|
| DF | D5 | | | | |
| E | | REV PER ECO-08-08122 | | | |



1. THIS CONNECTOR ASSEMBLY IS SUPPLIED WITH Be Cu CONTACT RETENTION CLIPS INSTALLED IN THE INSERT ASSEMBLY.
 2. THIS CONNECTOR ASSEMBLY MATES WITH ANY PLUG CONNECTOR WITH THE SAME INSERT ARRANGEMENT AND DIMENSIONAL REQUIREMENTS PER MIL-C-24308.
 3. MARKED WITH .047 (1191-062 (1.57) HIGH CHARACTERS. FAR SIDE REFERS TO THE WIDE SIDE OF THE KEYSTONE. NEAR SIDE REFERS TO THE NARROW SIDE OF THE KEYSTONE.
 4. MAXIMUM WIRE INSULATION TO BE USED WITH THIS CONNECTOR ASSEMBLY IS .068 (1.73) DIAMETER.
- ▲ UL/CSA DESIGNATION MARKED IN THIS AREA.
 ▲ SPECIAL REQUIREMENTS PER BOEING 1A01 DOCUMENT.
 ▲ BUILT TO ORDER, NO INVENTORY OF THIS PART NUMBER IS TO BE KEPT. SINGLE LOT DATE CODE REQUIRED.



| | | |
|---------|------------------|-------------|
| ▲▲ | 1A01-027PHW | 1-211639-1 |
| --- | --- | 211639-4 |
| ▲▲ | 1A01-027PHA | 211639-1 |
| REMARKS | CUSTOMER MARKING | PART NUMBER |

THIS DRAWING IS A CONTROLLED DOCUMENT. SEE SEAGER TUBING FOR LEASE TUBING FOR LEASE TUBING FOR LEASE TUBING FOR LEASE

DIMENSIONS: DIMENSIONS UNLESS OTHERWISE SPECIFIED
 UNITS: INCHES MILLIMETERS
 TOLERANCES: FRACTIONS DECIMALS ANGLES
 FINISHES: AS SUPPLIED POLISHED ANNEALED OTHER

TITLE: PLUG ASSY, AMPUMTE, 15 POSN, SIZE 2, SERIES 109 WITH GROMMET
 SIZE: A1
 DATE: 00779
 DRAWING NO: 211639
 CUSTOMER DRAWING:

TTI Electronics Corporation
 Harrisburg, PA 17105-3608
 SHEET: 4.1 OF 1