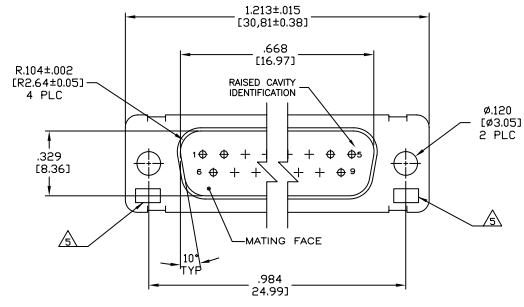
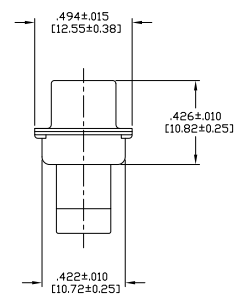
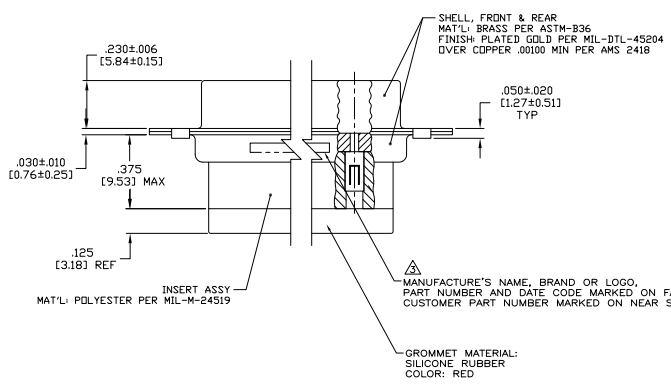


REV	DATE	DESCRIPTION	BY	APP'D
1				
2				
3				
4				
5				
6				
7				
8				



1. THIS CONNECTOR ASSEMBLY IS SUPPLIED WITH Be Cu CONTACT RETENTION CLIPS INSTALLED IN THE INSERT ASSEMBLY.
 2. THIS CONNECTOR ASSEMBLY MATES WITH ANY PLUG CONNECTOR WITH THE SAME INSERT ARRANGEMENT AND DIMENSIONAL REQUIREMENTS PER MIL-C-24308.
 3. MARKED WITH .047 (1191-062 (1.57) HIGH CHARACTERS. FAR SIDE REFERS TO THE WIDE SIDE OF THE KEYSTONE. NEAR SIDE REFERS TO THE NARROW SIDE OF THE KEYSTONE.
 4. MAXIMUM WIRE INSULATION TO BE USED WITH THIS CONNECTOR ASSEMBLY IS .054 (1.37) DIAMETER.
- ▲ UL/CSA DESIGNATION MARKED IN THIS AREA.
 ▲ SPECIAL REQUIREMENTS PER BOEING 1A01 DOCUMENT.
 ▲ BUILT TO ORDER, NO INVENTORY OF THIS PART NUMBER IS TO BE KEPT. SINGLE LOT DATE CODE REQUIRED.



REV	DATE	DESCRIPTION	BY	APP'D
1				
2				
3				
4				
5				
6				
7				
8				

REVISION	REMARKS	CUSTOMER MARKING	PART NUMBER
1			1-211638-1
2			211638-B
3			211638-4
4			211638-2
5			211638-1

OBSOLETE
 REMARKS
 CUSTOMER MARKING
 PART NUMBER

THIS DRAWING IS A CONTROLLED DOCUMENT. DATE: 11-10-08

INCHES (mm)
 UNLESS OTHERWISE SPECIFIED:
 DIMENSIONS ARE IN INCHES
 DECIMALS
 FRACTIONS
 ANGLES
 HOLE DIA
 TOLERANCES
 SURFACE FINISH
 SEE CALLOUTS

TITLE: PLUG ASSY,AMPLITE,SPOSN_SIZE 1, SERIES 109 WITH GROMMET
 DRAWING NO: 100779
 PART NO: 211638

CUSTOMER DRAWING
 DATE: 11-10-08
 SHEET: 1 OF 1