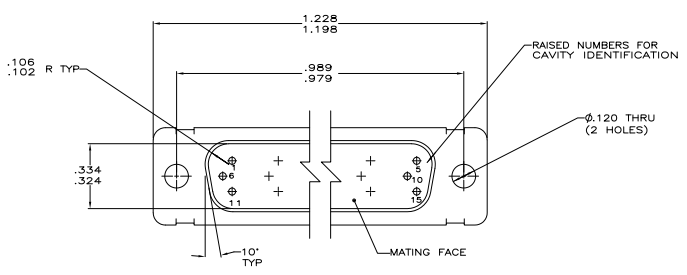
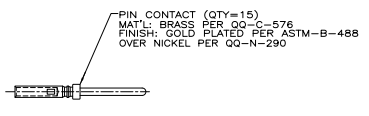
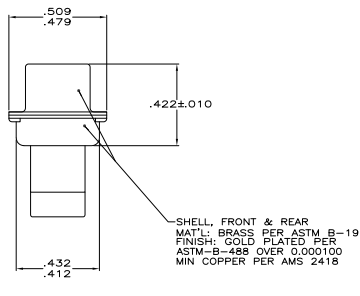
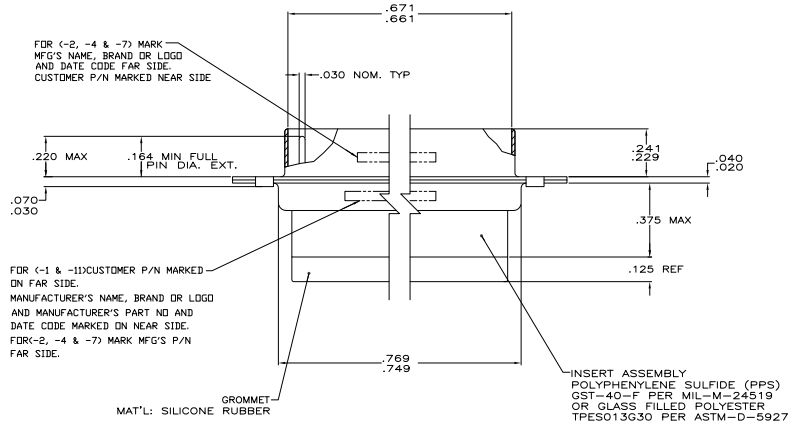


REV	DATE	DESCRIPTION	BY	CHK	APP
1	17FEB11				RL



1. THIS PLUG WILL MATE WITH ANY SIZE 1, 15 POSN. RCPT. IN AMPLIMITE SERIES.
  2. CONNECTOR SUPPLIED WITHOUT CONTACTS; SHOWN FOR ILLUSTRATION ONLY.
  3. BE-CU RETENTION CLIPS ARE INCLUDED IN INSERT AND INSTALLED WITH TINES POINTING TOWARDS MATING FACE.
  4. OVERALL DIMENSIONS DO NOT INCLUDE RAISED CAVITY IDENTIFICATION.
  5. MARKING FAR SIDE REFERS TO WIDE SIDE OF KEYSTONE. NEAR SIDE REFERS TO NARROW SIDE OF KEYSTONE
- ONLY PART NO. 211673-7 IS SUPPLIED WITH CONTACTS.
- 100% INSPECTION REQUIRED PER BOEING 1801:  
A. VISUAL  
B. DWV  
C. IR
- CUSTOMER REQUIRES SINGLE LOT DATE CODE.
- SPECIAL REQUIREMENTS:  
A. TEST TWO CONNECTORS PER LOT FOR COMPLIANCE TO GROMMET PEEL STRENGTH REQUIREMENTS.  
B. TEST ALL CIRCUIT CAVITIES FOR MISALIGNMENT OR EXCESSIVE ADHESIVE.



1B01-031PHW	1-211673-1
B010648-0001	211673-7
	211673-4
2A065-013V	211673-2
1B01-031	211673-1

REMARKS CUSTOMER PART NO. PART NO.

THIS DRAWING IS A CONTROLLED DOCUMENT. DATE: 11/11/03 BY: KASPER 2/28/04

DESIGNER: [Signature] CHECKER: [Signature]

DATE: 11/11/03 BY: KASPER 2/28/04

PROJECT: PLUG ASSY, AMPLIMITE, 15 POSN., SIZE 1, SERIES 900, NON-MAGNETIC, SPECIAL WITH GROMMET

SIZE: A1 DATE: 1007798 Q=211673

CUSTOMER DRAWING SHEET 4.1 OF 1 REV R