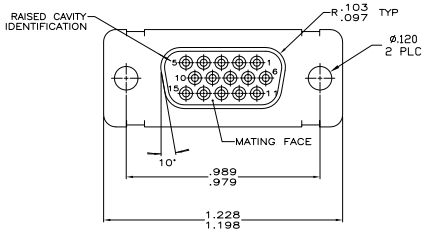
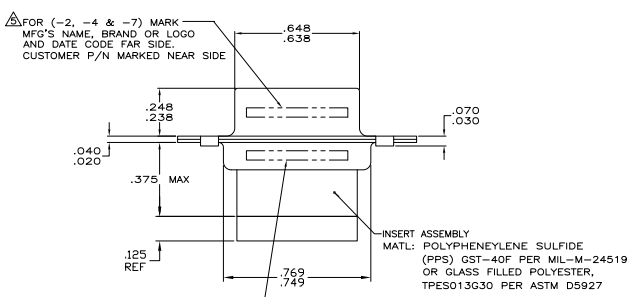


REV	DATE	DESCRIPTION	BY	CHK
1	REV PER ECD 08-022807			

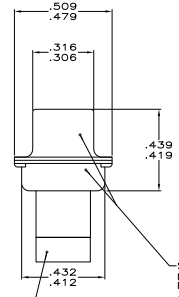


- THIS RECEPTACLE WILL MATE WITH ANY PLUG CONNECTOR WITH THE SAME INSERT ARRANGEMENT AS DEFINED BY HS18273-2.
 - CONNECTOR SUPPLIED WITHOUT CONTACTS; SHOWN FOR ILLUSTRATION ONLY.
 - BE-CU RETENTION CLIPS ARE INCLUDED IN INSERT AND INSTALLED WITH TINES POINTING TOWARDS MATING FACE.
 - OVERALL DIMENSIONS DO NOT INCLUDE RAISED CAVITY IDENTIFICATION.
- MARKING FAR SIDE REFERS TO WIDE SIDE OF KEYSTONE.
NEAR SIDE REFERS TO NARROW SIDE OF KEYSTONE
- 100% INSPECTION REQUIRED PER BOING 1801:
A. VISUAL
B. DWV
C. IR
- SPECIAL REQUIREMENTS:
A. TEST TWO CONNECTORS PER LOT FOR COMPLIANCE TO GROMMET PEEL STRENGTH REQUIREMENTS.
B. TEST ALL CIRCUIT CAVITIES FOR MISALIGNMENT OR EXCESSIVE ADHESIVE.



FOR (-2, -4 & -7) MARK MFG'S NAME, BRAND OR LOGO AND DATE CODE FAR SIDE. CUSTOMER P/N MARKED NEAR SIDE.

FOR (-1 & -11) CUSTOMER P/N MARKED ON FAR SIDE. MANUFACTURER'S NAME, BRAND OR LOGO AND MANUFACTURER'S PART NO AND DATE CODE MARKED ON NEAR SIDE. FOR (-2, -4 & -7) MARK MFG'S P/N FAR SIDE.



MFG'S P/N 206071-1 (SUPPLIED WITH 211667-7 ONLY)

SHELL, FRONT & REAR
MAT'L: BRASS PER ASTM B-19
FINISH: GOLD PLATED PER ASTM-B-488 OVER 0.000100 MIN COPPER PER AMS 2418

GROMMET
MAT'L: SILICONE RUBBER

REMARKS	CUSTOMER PART NO.	MARKED MFG'S P/N	PART NO
CONTACTS INCLUDED	B010648-0002	211667-7	211667-7
---	---	211667-4	211667-4
---	2A065-019V	211667-2	211667-2
---	1B01-025	211667-1	211667-1

THIS DRAWING IS A CONTROLLED DOCUMENT.		DATE: 3-3-07	BY: J. THOMAS	REV: 3-3-07
DRAWING NO: 100779		DATE: 3-3-07	BY: J. THOMAS	REV: 3-3-07
REVISIONS:		DATE: 3-3-07	BY: J. THOMAS	REV: 3-3-07
DESCRIPTION: RECEPTACLE ASSY, AMP/LIMIT, 15 POSN., SIZE 1, SERIES SOLA/MH-MAGNETIC WITH GROMMET		DATE: 3-3-07	BY: J. THOMAS	REV: 3-3-07
MATERIAL: 100779		DATE: 3-3-07	BY: J. THOMAS	REV: 3-3-07
PART NO: 211667		DATE: 3-3-07	BY: J. THOMAS	REV: 3-3-07
CUSTOMER DRAWING		DATE: 3-3-07	BY: J. THOMAS	REV: 3-3-07