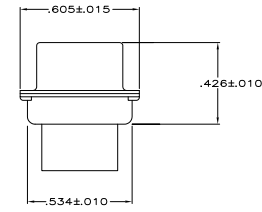
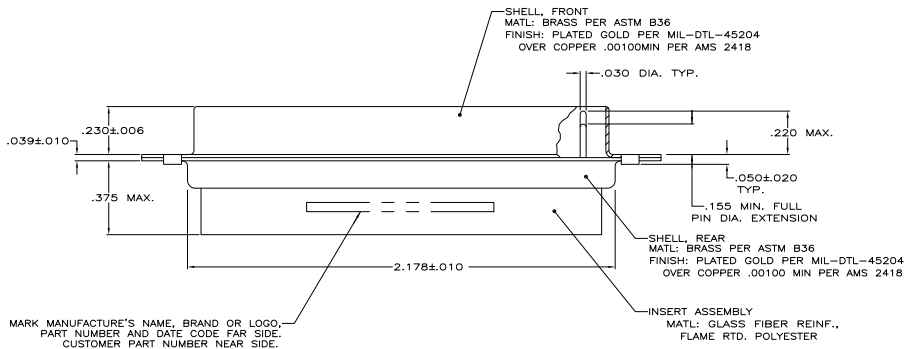


1. THIS PLUG WILL MATE WITH ANY 50 POSN., SIZE 5 RECEPTACLE IN THE AMPLIMITE SERIES.
  2. MAXIMUM WIRE INSULATION USED WITH THIS CONNECTOR IS .068 DIA.
  3. BE-CU RETENTION CLIPS ARE INCLUDED IN INSERT.
  4. CONNECTOR SUPPLIED WITHOUT CONTACTS; SHOWN FOR ILLUSTRATION ONLY.
- ▲ UL/CSA DESIGNATION STAMPED IN THIS AREA.



MARK MANUFACTURE'S NAME, BRAND OR LOGO,  
 PART NUMBER AND DATE CODE FAR SIDE.  
 CUSTOMER PART NUMBER NEAR SIDE.

1A01-007PHW	1-211622-1
2A014-005-001	211622-5
1A01-010PHA	211622-1
CUSTOMER PART NO	PART NO

THIS DRAWING IS A CONTROLLED DOCUMENT.

DESIGNER	DATE	BY	DATE
INSP	DATE	BY	DATE
APP	DATE	BY	DATE
CHK	DATE	BY	DATE
REV	DATE	BY	DATE

Yates Electronics Corporation  
 Harrisburg, PA 17102-3608

PLUG ASSEMBLY, AMPLIMITE  
 50 POSITION, SIZE 5, SERIES 109,  
 NON-MAGNETIC

SIZE: 100779 DRAWING NO: A100779 Q=211622  
 CUSTOMER DRAWING