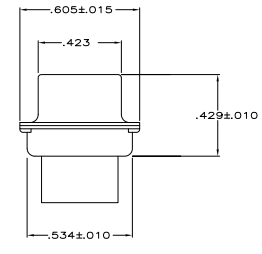
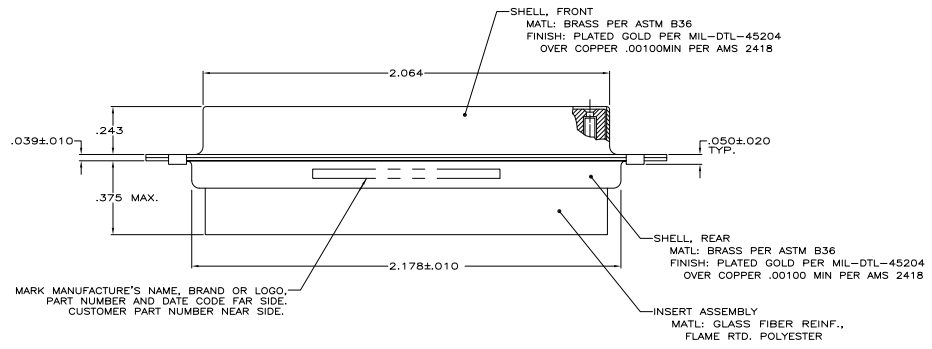


1. THIS RECEPTACLE WILL MATE WITH ANY 50 POSN., SIZE 5 PLUG IN THE AMPLIMITE SERIES.
 2. MAXIMUM WIRE INSULATION USED WITH THIS CONNECTOR IS .068 DIA.
 3. BE-CU RETENTION CLIPS ARE INCLUDED IN INSERT.
 4. CONNECTOR SUPPLIED WITHOUT CONTACTS; SHOWN FOR ILLUSTRATION ONLY.
- △ UL/CSA DESIGNATION STAMPED IN THIS AREA, OPTIONAL



MARK MANUFACTURE'S NAME, BRAND OR LOGO, PART NUMBER AND DATE CODE FAR SIDE. CUSTOMER PART NUMBER NEAR SIDE.

1A01-005RHW	1-211617-1
1A01-005RHA	211617-1
CUSTOMER PART NO.	PART NO.

THIS DRAWING IS A CONTROLLED DOCUMENT. SHEET 1 OF 1

DESIGNED BY	J. SHEY	DATE	11-13-87
DRAWN BY	J. SHEY	DATE	11-30-87
CHECKED BY	J. SHEY	DATE	11-30-87
APPROVED BY	J. SHEY	DATE	11-30-87

YTS Electronics Corporation
 Harrisburg, PA 17102-3608

RECEPTACLE ASSEMBLY, AMPLIMITE
 50 POSITION, SIZE 5, SERIES 109,
 NON-MAGNETIC

SIZE: A1 DATE CODE: 00779 DRAWING NO: 211617

CUSTOMER DRAWING