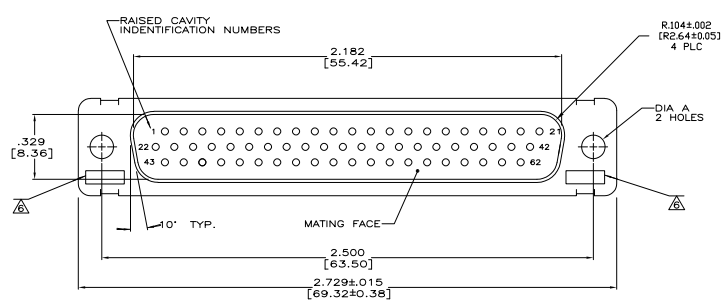
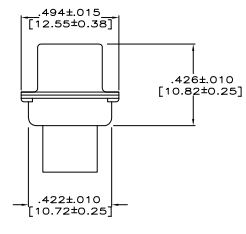
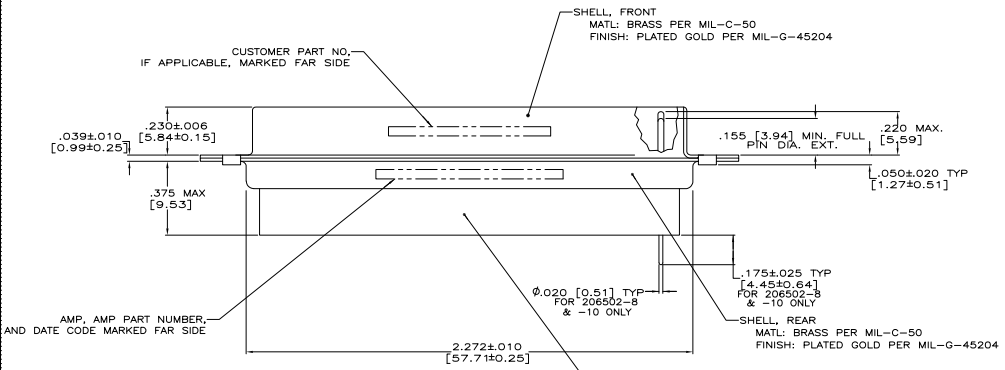


THIS DRAWING IS UNPUBLISHED
 RELEASED FOR INFORMATION
 IN THE ELECTRONICS CORPORATION ALL RIGHTS RESERVED

REV	DATE	BY	DESCRIPTION	DATE	BY
DF	DO	U	REV PER ECU 06-024728	11-3-06	CT ND



1. THIS PLUG WILL MATE WITH ANY RECEPTACLE CONNECTOR WITH THE SAME INSERT ARRANGEMENT AS DEFINED BY MS18276-2.
 2. MAXIMUM WIRE INSULATION USED WITH THIS PLUG IS .054 (1.37) DIA.
 3. Be-Cu RETENTION CLIPS ARE INCLUDED IN INSERTS.
- ▲ INSPECTION REQUIREMENTS PER R4383.
 ▲ CONNECTOR SUPPLIED WITH 69 CONTACTS, AMP PART NUMBER 204370-8 INSPECTION REQUIREMENTS PER R4385 WITHOUT TESTS FOR HIGH ALTITUDE DIELECTRIC WITHSTANDING VOLTAGE AS CALLED FOR IN TABLE II SCREENING AND TESTING.
 ▲ UL/CSA DESIGNATION STAMPED IN THIS AREA, OPTIONAL.
 ▲ CONNECTOR LOADED WITH POSTED CONTACTS: INSPECTION REQUIREMENTS PER GENERAL ELECTRIC DOCUMENT 29025720.
 ▲ RESTRICTED TO CAE ELECTRONICS ONLY.
 ▲ THESE CONNECTORS ARE QUALIFIED TO GODDARD SPACE FLIGHT CENTER SPECIFICATION S-311P-4.
 ▲ CONNECTOR LOADED WITH POSTED CONTACTS.



AMP PART NUMBER 204370-8
 GSFC PART NUMBER G-08-P1
 (SUPPLIED WITH 206502-6 ONLY)

▲	120 [3.05]	570566-10	1-206502-1	1-206502-1
▲	120 [3.05]	311P407-4P-B-12	1-206502-0	1-206502-0
▲	120 [3.05]	20025720P2062P	206502-4	206502-9
▲	154 [3.91]	SC81D139-054	206502-8	206502-8
▲	120 [3.05]	R4383P62P	206502-7	206502-7
▲	120 [3.05]	R4383P62P	206502-6	206502-6
▲	120 [3.05]	R4383P62P-2	206502-5	206502-5
▲	120 [3.05]	311P407-4P-B-12	206502-4	206502-4
▲	154 [3.91]	-----	206502-3	206502-3
▲	120 [3.05]	R3259P62P	206502-2	206502-2
▲	154 [3.91]	311P407-4P-B-15	206502-1	206502-1

REMARKS	DIA A	CUSTOMER P/N	AMP P/N	AMP P/N
		DN CONNECTOR	DN CONNECTOR	AMP P/N

THIS DRAWING IS A CONTROLLED DOCUMENT. DATE: 12-18-06

DESIGNED BY: J. CLAYTON DATE: 12-18-06

APPROVED BY: J. CLAYTON DATE: 12-18-06

DATE: 12-18-06

AMPLITE NONMAGNETIC PLUG ASSEMBLY, SERIES 90, SHELL SIZE 4, 62 POSITION

AMP PART NUMBER: 206502

REV: 1