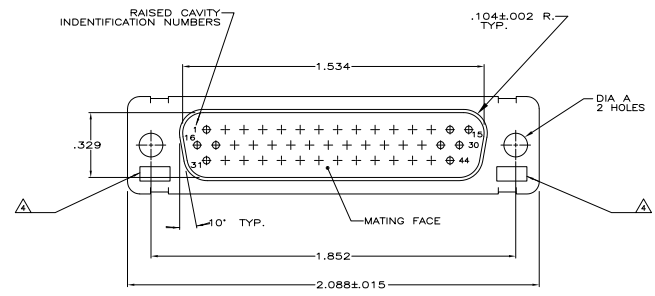
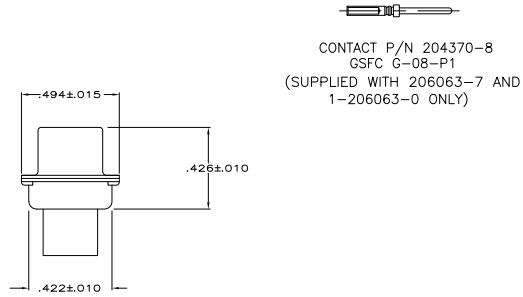
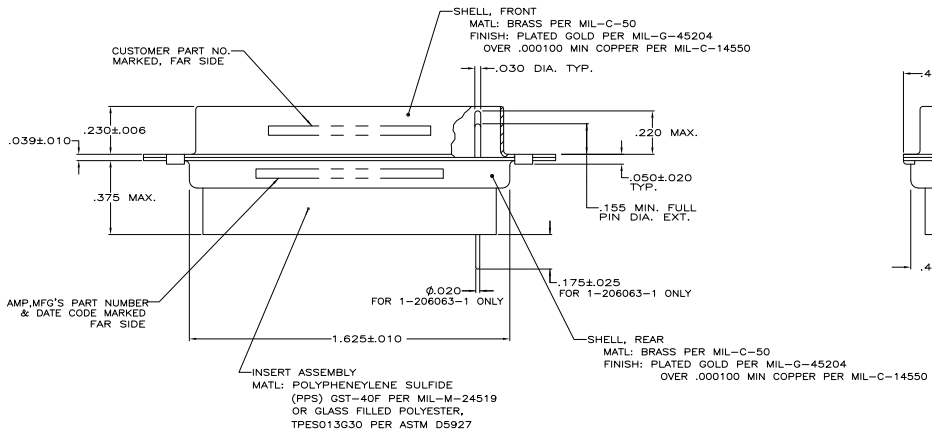


THIS DRAWING IS UNPUBLISHED
 ALL RIGHTS RESERVED

REV	DATE	DESCRIPTION	BY	CHK	APP
AA1		REVISED PER ECO-11-005030			



- THIS PLUG WILL MATE WITH ANY RECEPTACLE CONNECTOR WITH THE SAME INSERT ARRANGEMENT AS DEFINED BY MS18275-2.
- MAXIMUM WIRE INSULATION USED WITH THIS RCPT. IS .054 DIA.
- Be-Cu RETENTION CLIPS ARE INCLUDED IN INSERTS.
- UL/CSA DESIGNATION MARKED IN THIS AREA, OPTIONAL.
- INSPECTION REQUIREMENTS PER R4383.
- CONNECTOR SUPPLIED WITH 49 CONTACTS. MFG'S PART NUMBER 204370-8. INSPECTION REQUIREMENTS PER R4383 WITHOUT TESTS FOR HIGH ALTITUDE DIELECTRIC WITHSTANDING VOLTAGE AS CALLED FOR IN TABLE II SCREENING AND TESTING.
- THESE CONNECTORS ARE QUALIFIED TO GODDARD SPACE FLIGHT CENTER SPECIFICATION S-3II-P-4.
- 54 CONTACTS, MFG'S PART NUMBER 204370-8, SUPPLIED WITH EACH CONNECTOR
- CONNECTOR LOADED WITH PDSST CONTACTS. INSPECTION REQUIREMENTS PER GENERAL ELECTRIC DOCUMENT 20025720.
- RESTRICTED TO CAE ELECTRONICS ONLY.



△△	.120	570566-9	1-206063-3	1-206063-3
△△	.120	311P407-3P-B-12	1-206063-2	1-206063-2
△△	.120	20025720P2044P	1-206063-1	1-206063-1
△△	.120	3261113-11	1-203063-0	1-203063-0
△△	.120	1622251-002	206063-9	206063-9
△△	.120	7636-5	206063-8	206063-8
△△	.120	R4383P44P	206063-7	206063-7
△△	.120	R4383P44P	206063-6	206063-6
△△	.120	R4383P44P	206063-5	206063-5
△△	.120	311P407-3P-B-12	206063-4	206063-4
△△	.154	311P407-3P-B-15	206063-2	206063-2
△△	.120	R9259P44P	206063-1	206063-1

REMARKS	DIA A	MARKED	CUSTOMER P/N	MARKED	AMP P/N	MFG'S	PART NUMBER

THIS DRAWING IS A CONTROLLED DOCUMENT. BY CLOUSER 12-30-83
 DATE 11-18-81
 BY EANSLEY 11-18-81
 DATE 11-18-81
 BY EANSLEY 11-18-81
 DATE 11-18-81

TE Connectivity
 PLUG, PIN CONTACTS
 H-DENSITY HDG CONNECTOR
 SIZE 3 (64 POSITION)

SIZE 3 (64 POSITION)
 PART NUMBER 206063-7
 CUSTOMER DRAWING A100779G=206063-7