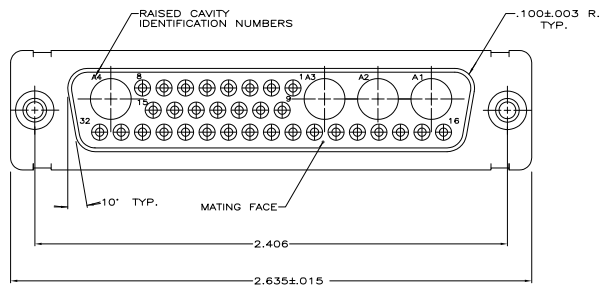
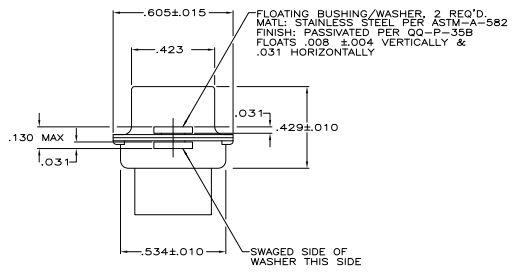
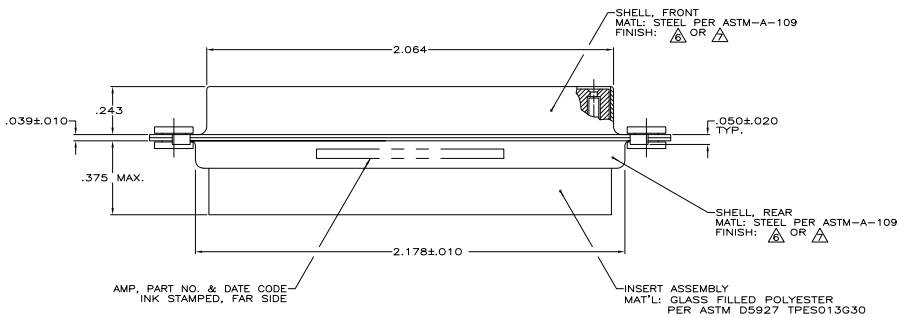


THIS DRAWING IS UNPUBLISHED. RECEIVED FOR REPRODUCTION
 © AMP, INC. ALL RIGHTS RESERVED. BY THE ELECTRONICS CORPORATION

REV. NO.		REV. DATE		REVISIONS	
DF	DO	1	11-10-58	DESCRIPTION	DATE
		C	REV PER ECR-06--000566	23MMMS	TK CT



1. THIS RECEPTACLE WILL MATE WITH ANY 36C4, SIZE 5 PLUG IN AMPLUMITE SERIES.
 2. MAXIMUM WIRE INSULATION TO BE USED WITH THIS PLUG IS .068 DIA.
 3. STAINLESS STEEL RETENTION CLIPS ARE INCLUDED IN INSERT ASSEMBLY.
 4. CONNECTOR SUPPLIED WITHOUT CONTACTS, SHOWN FOR ILLUSTRATION ONLY.
 5. THIS CONNECTOR ACCEPTS SIZE 20 SOCKET CONTACTS.
- ▲ FINISH: CADMIUM PLATED PER QQ-P-416.
 ▲ FINISH: PLATED BRIGHT TIN PER MIL-T-10727 OR MIL-L-46064 OVER COPPER PER MIL-C-14550.



▲ 445727-2
 ▲ 445727-1
 PART NO

THIS DRAWING IS A CONTROLLED DOCUMENT.		BY: SHELEY 11-10-58	AMP	Yps Electronics Corporation
CHECKED: [Signature]		BY: CANAL 11-10-58	AMP	Harrisburg, Pa 17105-3608
DESIGNED: [Signature]		BY: [Signature]	AMP	
DRAWN: [Signature]		DATE: 11-10-58	AMP	
MATERIAL: [Signature]		RECEPTACLE ASSEMBLY, AMPLUMITE, 36C4 SIZE 5, SERIES 109, CS&M MK, WITH FLOAT BUSHINGS.		
SPECIFICATIONS: [Signature]		SIZE: [Signature]	DATE: [Signature]	REWORKED TO: [Signature]
SEE CALLOUTS		REV: [Signature]	DATE: [Signature]	REV: [Signature]
SEE CALLOUTS		CUSTOMER DRAWING	TABLE: 4-1	REV: 1