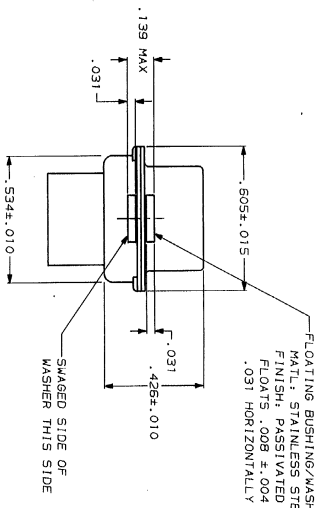
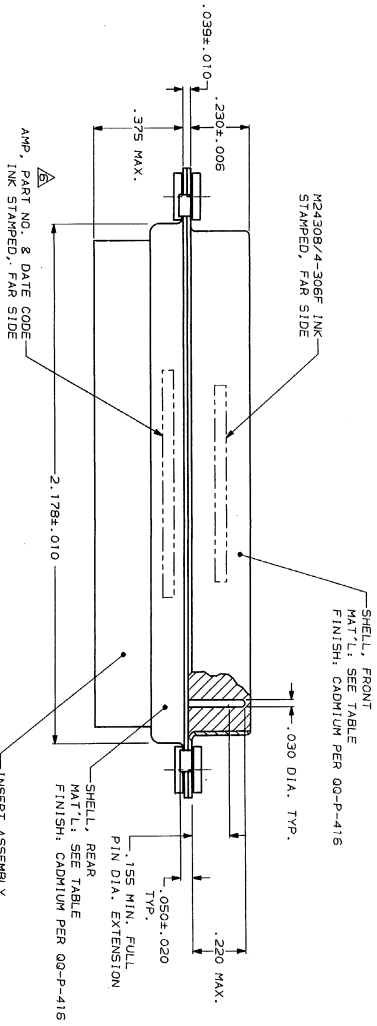
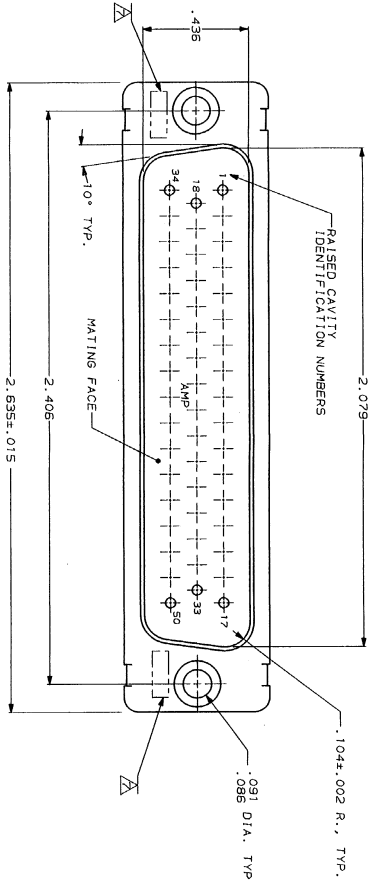


DRAWING MADE IN THIS ANGLE PRODUCTION
 THIS DRAWING IS UNRELEASABLE
 RELEASED FOR PUBLICATION
 BY AMP CORPORATION, ALL INFORMATION HEREIN IS UNCLASSIFIED
 DATE 08-11-2011 BY 60322 UCBAW



1. THIS PLUG IS DESIGNED TO CONFORM TO THE LATEST ISSUE OF MIL-C-24308
 2. MAX WIRE INSUL. TO BE USED WITH THIS PLUG IS .068 DIA.
 3. STAINLESS STEEL RETENTION CLIPS ARE INCLUDED IN INSERTS
 4. PACKAGE STAMPED M 24308/A-328F
 5. THIS PLUG WILL ACCEPT SIZE 20 PIN CONTACT M24308/11 OR AMP # 205089
- AMP PART NO. STAMPED ON CONNECTOR REPRESENTS KIT NUMBER WITH CONTACTS
- UL/CUL DESIGNATION STAMPED IN THIS AREA.

DO NOT SCALE PRINT. DIMENSIONS IN INCHES DIMENSIONS ON 1 3 R.D. DEC & .005 POTENTIAL OR 12-3-87 CHK 12-10-87 F.C. BALLEW III APPD 12-9-87 APPD 12-10-87 D.J.M.	OR 12-3-87 CHK 12-10-87 F.C. BALLEW III APPD 12-9-87 APPD 12-10-87 D.J.M.	NAME AMP LITE PLUG FOR PIN CONTACTS HI-DENSITY "HDM-20" CONNECTOR SIZE 5 (50 POS) SERIES 109 WITH FLOAT BUSHINGS	AMP CORPORATION 1000 W. 10TH ST. MILWAUKEE, WI 53219
FINISH SEE CALLOUTS	REVISIONS DATE BY	REVISIONS DATE BY	REVISIONS DATE BY
SEE CALLOUTS	5095	DF	D0
SEE CALLOUTS	REV 2	REV 2	REV 2
SEE CALLOUTS	REV 1	REV 1	REV 1
SEE CALLOUTS	REV 0	REV 0	REV 0
SEE CALLOUTS	REV -1	REV -1	REV -1
SEE CALLOUTS	REV -2	REV -2	REV -2
SEE CALLOUTS	REV -3	REV -3	REV -3
SEE CALLOUTS	REV -4	REV -4	REV -4
SEE CALLOUTS	REV -5	REV -5	REV -5
SEE CALLOUTS	REV -6	REV -6	REV -6
SEE CALLOUTS	REV -7	REV -7	REV -7
SEE CALLOUTS	REV -8	REV -8	REV -8
SEE CALLOUTS	REV -9	REV -9	REV -9
SEE CALLOUTS	REV -10	REV -10	REV -10
SEE CALLOUTS	REV -11	REV -11	REV -11
SEE CALLOUTS	REV -12	REV -12	REV -12
SEE CALLOUTS	REV -13	REV -13	REV -13
SEE CALLOUTS	REV -14	REV -14	REV -14
SEE CALLOUTS	REV -15	REV -15	REV -15
SEE CALLOUTS	REV -16	REV -16	REV -16
SEE CALLOUTS	REV -17	REV -17	REV -17
SEE CALLOUTS	REV -18	REV -18	REV -18
SEE CALLOUTS	REV -19	REV -19	REV -19
SEE CALLOUTS	REV -20	REV -20	REV -20
SEE CALLOUTS	REV -21	REV -21	REV -21
SEE CALLOUTS	REV -22	REV -22	REV -22
SEE CALLOUTS	REV -23	REV -23	REV -23
SEE CALLOUTS	REV -24	REV -24	REV -24
SEE CALLOUTS	REV -25	REV -25	REV -25
SEE CALLOUTS	REV -26	REV -26	REV -26
SEE CALLOUTS	REV -27	REV -27	REV -27
SEE CALLOUTS	REV -28	REV -28	REV -28
SEE CALLOUTS	REV -29	REV -29	REV -29
SEE CALLOUTS	REV -30	REV -30	REV -30
SEE CALLOUTS	REV -31	REV -31	REV -31
SEE CALLOUTS	REV -32	REV -32	REV -32
SEE CALLOUTS	REV -33	REV -33	REV -33
SEE CALLOUTS	REV -34	REV -34	REV -34
SEE CALLOUTS	REV -35	REV -35	REV -35
SEE CALLOUTS	REV -36	REV -36	REV -36
SEE CALLOUTS	REV -37	REV -37	REV -37
SEE CALLOUTS	REV -38	REV -38	REV -38
SEE CALLOUTS	REV -39	REV -39	REV -39
SEE CALLOUTS	REV -40	REV -40	REV -40
SEE CALLOUTS	REV -41	REV -41	REV -41
SEE CALLOUTS	REV -42	REV -42	REV -42
SEE CALLOUTS	REV -43	REV -43	REV -43
SEE CALLOUTS	REV -44	REV -44	REV -44
SEE CALLOUTS	REV -45	REV -45	REV -45
SEE CALLOUTS	REV -46	REV -46	REV -46
SEE CALLOUTS	REV -47	REV -47	REV -47
SEE CALLOUTS	REV -48	REV -48	REV -48
SEE CALLOUTS	REV -49	REV -49	REV -49
SEE CALLOUTS	REV -50	REV -50	REV -50
SEE CALLOUTS	REV -51	REV -51	REV -51
SEE CALLOUTS	REV -52	REV -52	REV -52
SEE CALLOUTS	REV -53	REV -53	REV -53
SEE CALLOUTS	REV -54	REV -54	REV -54
SEE CALLOUTS	REV -55	REV -55	REV -55
SEE CALLOUTS	REV -56	REV -56	REV -56
SEE CALLOUTS	REV -57	REV -57	REV -57
SEE CALLOUTS	REV -58	REV -58	REV -58
SEE CALLOUTS	REV -59	REV -59	REV -59
SEE CALLOUTS	REV -60	REV -60	REV -60
SEE CALLOUTS	REV -61	REV -61	REV -61
SEE CALLOUTS	REV -62	REV -62	REV -62
SEE CALLOUTS	REV -63	REV -63	REV -63
SEE CALLOUTS	REV -64	REV -64	REV -64
SEE CALLOUTS	REV -65	REV -65	REV -65
SEE CALLOUTS	REV -66	REV -66	REV -66
SEE CALLOUTS	REV -67	REV -67	REV -67
SEE CALLOUTS	REV -68	REV -68	REV -68
SEE CALLOUTS	REV -69	REV -69	REV -69
SEE CALLOUTS	REV -70	REV -70	REV -70
SEE CALLOUTS	REV -71	REV -71	REV -71
SEE CALLOUTS	REV -72	REV -72	REV -72
SEE CALLOUTS	REV -73	REV -73	REV -73
SEE CALLOUTS	REV -74	REV -74	REV -74
SEE CALLOUTS	REV -75	REV -75	REV -75
SEE CALLOUTS	REV -76	REV -76	REV -76
SEE CALLOUTS	REV -77	REV -77	REV -77
SEE CALLOUTS	REV -78	REV -78	REV -78
SEE CALLOUTS	REV -79	REV -79	REV -79
SEE CALLOUTS	REV -80	REV -80	REV -80
SEE CALLOUTS	REV -81	REV -81	REV -81
SEE CALLOUTS	REV -82	REV -82	REV -82
SEE CALLOUTS	REV -83	REV -83	REV -83
SEE CALLOUTS	REV -84	REV -84	REV -84
SEE CALLOUTS	REV -85	REV -85	REV -85
SEE CALLOUTS	REV -86	REV -86	REV -86
SEE CALLOUTS	REV -87	REV -87	REV -87
SEE CALLOUTS	REV -88	REV -88	REV -88
SEE CALLOUTS	REV -89	REV -89	REV -89
SEE CALLOUTS	REV -90	REV -90	REV -90
SEE CALLOUTS	REV -91	REV -91	REV -91
SEE CALLOUTS	REV -92	REV -92	REV -92
SEE CALLOUTS	REV -93	REV -93	REV -93
SEE CALLOUTS	REV -94	REV -94	REV -94
SEE CALLOUTS	REV -95	REV -95	REV -95
SEE CALLOUTS	REV -96	REV -96	REV -96
SEE CALLOUTS	REV -97	REV -97	REV -97
SEE CALLOUTS	REV -98	REV -98	REV -98
SEE CALLOUTS	REV -99	REV -99	REV -99
SEE CALLOUTS	REV -100	REV -100	REV -100

OBsolete

BRASS	205415-2
STEEL PER	205415-1
ASTM-A-103	
SHELL MATL.	

CUSTOMER DRAWING