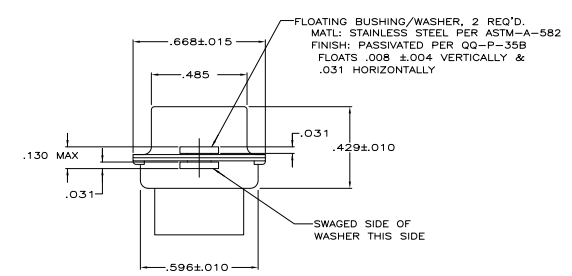
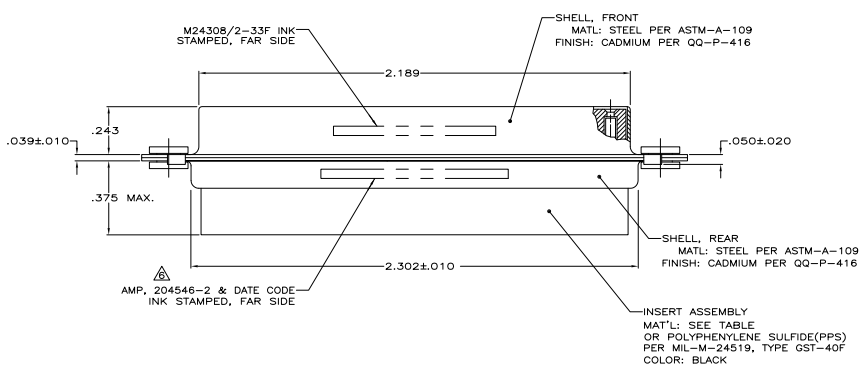
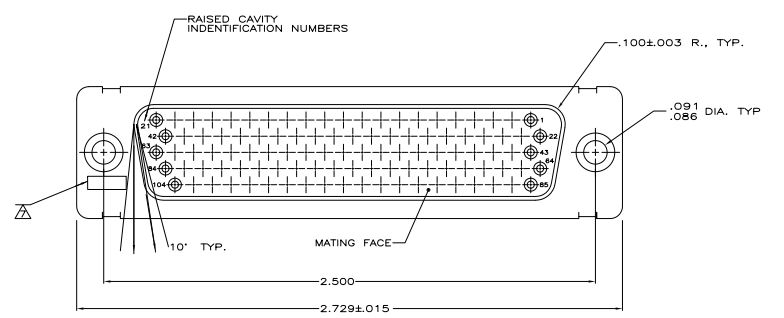


REVISES		DATE	BY	APP'D
1	REV PER ECD-10-001170	27MAY10	PY	RL



1. THIS RCPT. IS DESIGNED TO CONFORM TO THE LATEST ISSUE OF MIL-C-24308
  2. MAX WIRE INSUL TO BE USED WITH THIS RCPT IS .054 DIA
  3. METAL RETENTION CLIPS ARE INCLUDED IN INSERTS
  4. PACKAGE STAMPED M 24308/2-302F
  5. THIS RCPT. WILL ACCEPT SIZE 22 SOCKET CONTACT M 24308/12 OR AMP # 204351
- AMP PART NO. STAMPED ON CONNECTOR REPRESENTS KIT NUMBER WITH CONTACTS

OBsolete	PHENOLIC COLOR: BLACK	204534-2
	DIALYL: PHTHALATE	204534-1
	COLOR: BLUE	
	INSERT MAT'L	PART NO

THIS DRAWING IS A CONTROLLED DOCUMENT. CONTROLLED BY: J. THOMAS, 1-30-88. CONTROLLED BY: J. BALLEW, 1-30-88. CONTROLLED BY: J. BALLEW, 1-30-88.

AMPLITE RCPT FOR SOCKET CONTACTS HI-DENSITY D CONNECTOR, SIZE 6 (104 POSN) SERIES 90 WITH FLOATING BUSHINGS

DATE: 00779 Q=204534

CUSTOMER DRAWING