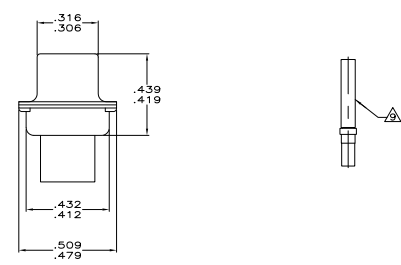
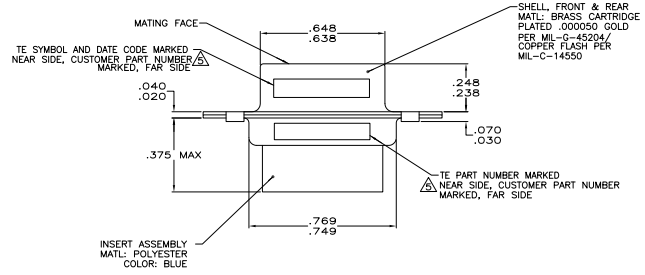
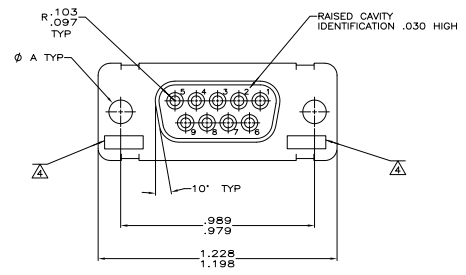


REV	DATE	DESCRIPTION	BY	CHK	APP
N	REV PER ECO 07-019177		0802107	PY	BW
P	AS PER ECO-08-018803		08-08-08	PK	RL



- △ THIS RECEPTACLE WILL MATE WITH ANY PLUG WITH THE SAME INSERT ARRANGEMENT AS DEFINED BY MS18273-1.
- 2. MAXIMUM WIRE INSULATION USED WITH THIS RECEPTACLE IS .072 DIA MAX.
- 3. Be Cu RETENTION CLIPS ARE INCLUDED IN THIS AREA.
- △ UL/CSA DESIGNATION STAMPED IN THIS AREA.
- △ CUSTOMER PART NUMBER MAY BE SPLIT BETWEEN FRONT AND REAR SHELLS, SAME SIDE. FAR SIDE REFERS TO WIDE SIDE OF KEYSTONE, NEAR SIDE REFERS TO NARROW SIDE OF KEYSTONE.
- △ THESE CONNECTORS ARE QUALIFIED TO GODDARD SPACE FLIGHT CENTER SPECIFICATION S-311-P-4.
- 7. CUSTOMER PART NUMBER MAY BE SPLIT BETWEEN FRONT AND REAR SHELLS.
- △ RESTRICTED TO CAE ELECTRONICS ONLY.
- △ CONNECTOR SUPPLIED WITH CONTACTS, TE PART NUMBER 206793-1 (NOT INSTALLED).

SUPERSEDED BY	TE P/N	CUSTOMER P/N	TE P/N	AMP P/N
1996077-1	.120	833364BP2	207253-8	207253-8
	.120	570513-1	207253-7	207253-7
	.120	LMSC 1621480-001	207253-6	207253-6
	.120	LMSC 1621480-001	207253-5	207253-5
	.120	311P409-1S-B-12	207253-2	207253-4
	-	-	207253-3	207253-3
	.120	311P409-1S-B-12	207253-2	207253-2
	.154	311P409-1S-B-15	207253-1	207253-1

REMARKS	DIA A	INK STAMPED CUSTOMER P/N	INK STAMPED TE P/N	AMP P/N

THIS DRAWING IS A CONTROLLED DOCUMENT. DATE: 04-11-04
 DESIGNED BY: J. THOMPSON
 DRAWN BY: J. MANTON
 CHECKED BY: J. MANTON
 APPROVED BY: J. MANTON
 TYS ELECTRONICS CORPORATION
 HARRISBURG, PA 17105-3608
 AMPLITUDE RECEPTACLE ASSEMBLY
 SERIES 90, SIZE 1
 TYP: 007793 (REV) NO: 207253
 SHEET: 4 OF 1
 REV: P