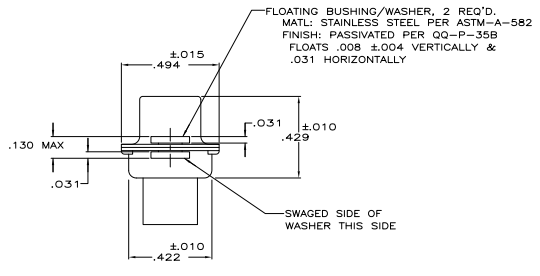
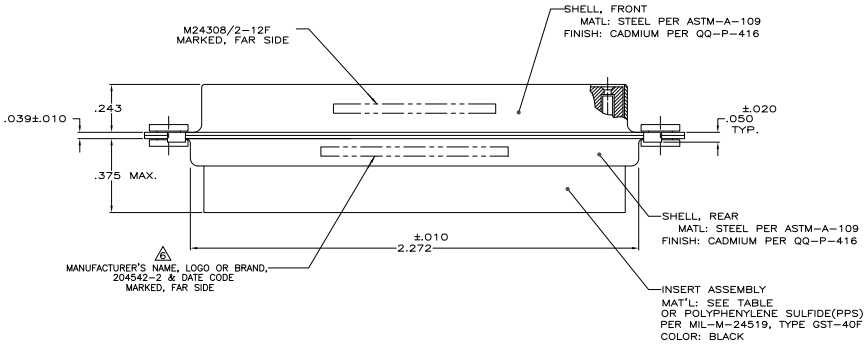
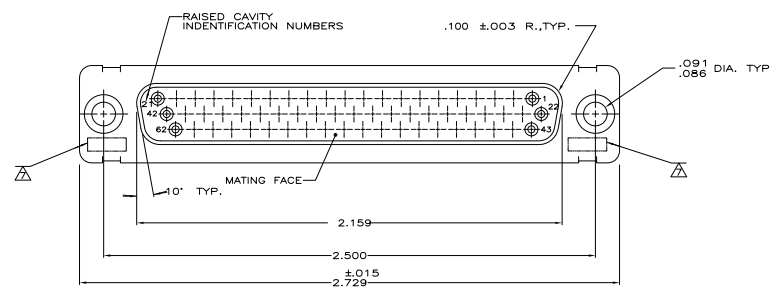


PROJ	REV	DATE	DESCRIPTION	BY	APP
5066	DF	DO			
CODE					

REVISIONS		DATE	BY	APP
1		24-02-09	CT	RL
2				

1. THIS RCPT. IS DESIGNED TO CONFORM TO THE LATEST ISSUE OF MIL-C-24308
  2. MAX WIRE INSUL TO BE USED WITH THIS RCPT IS .054 DIA
  3. METAL RETENTION CLIPS ARE INCLUDED IN INSERTS
  4. PACKAGE MARKED M 24308/2-300F
  5. THIS RCPT. WILL ACCEPT SIZE 22 SOCKET CONTACT M 24308/12 OR TE # 204351
- ▲ MANUFACTURER'S PART NO. MARKED ON CONNECTOR REPRESENTS KIT NUMBER WITH CONTACTS  
 ▲ UL/CSA DESIGNATION MARKED IN THIS AREA, OPTIONAL



OBSOLETE	PHENOLIC COLOR:BLACK	204530-1
	Diallyl Phthalate COLOR: BLUE	204530-1
	INSERT MAT'L	PART NO

THIS DRAWING IS A CONTROLLED DOCUMENT.		DATE: 12-3-87	BY: J. THOMAS
DRAWING NUMBER: 5066		DATE: 1-28-88	BY: J. BALEW II
REVISED: 1		DATE: 1-28-88	BY: J. BALEW II
REVISED: 2		DATE: 1-28-88	BY: J. BALEW II
REVISED: 3		DATE: 1-28-88	BY: J. BALEW II
REVISED: 4		DATE: 1-28-88	BY: J. BALEW II
REVISED: 5		DATE: 1-28-88	BY: J. BALEW II
REVISED: 6		DATE: 1-28-88	BY: J. BALEW II
REVISED: 7		DATE: 1-28-88	BY: J. BALEW II
REVISED: 8		DATE: 1-28-88	BY: J. BALEW II
REVISED: 9		DATE: 1-28-88	BY: J. BALEW II
REVISED: 10		DATE: 1-28-88	BY: J. BALEW II
REVISED: 11		DATE: 1-28-88	BY: J. BALEW II
REVISED: 12		DATE: 1-28-88	BY: J. BALEW II
REVISED: 13		DATE: 1-28-88	BY: J. BALEW II
REVISED: 14		DATE: 1-28-88	BY: J. BALEW II
REVISED: 15		DATE: 1-28-88	BY: J. BALEW II
REVISED: 16		DATE: 1-28-88	BY: J. BALEW II
REVISED: 17		DATE: 1-28-88	BY: J. BALEW II
REVISED: 18		DATE: 1-28-88	BY: J. BALEW II
REVISED: 19		DATE: 1-28-88	BY: J. BALEW II
REVISED: 20		DATE: 1-28-88	BY: J. BALEW II
REVISED: 21		DATE: 1-28-88	BY: J. BALEW II
REVISED: 22		DATE: 1-28-88	BY: J. BALEW II
REVISED: 23		DATE: 1-28-88	BY: J. BALEW II
REVISED: 24		DATE: 1-28-88	BY: J. BALEW II
REVISED: 25		DATE: 1-28-88	BY: J. BALEW II
REVISED: 26		DATE: 1-28-88	BY: J. BALEW II
REVISED: 27		DATE: 1-28-88	BY: J. BALEW II
REVISED: 28		DATE: 1-28-88	BY: J. BALEW II
REVISED: 29		DATE: 1-28-88	BY: J. BALEW II
REVISED: 30		DATE: 1-28-88	BY: J. BALEW II
REVISED: 31		DATE: 1-28-88	BY: J. BALEW II
REVISED: 32		DATE: 1-28-88	BY: J. BALEW II
REVISED: 33		DATE: 1-28-88	BY: J. BALEW II
REVISED: 34		DATE: 1-28-88	BY: J. BALEW II
REVISED: 35		DATE: 1-28-88	BY: J. BALEW II
REVISED: 36		DATE: 1-28-88	BY: J. BALEW II
REVISED: 37		DATE: 1-28-88	BY: J. BALEW II
REVISED: 38		DATE: 1-28-88	BY: J. BALEW II
REVISED: 39		DATE: 1-28-88	BY: J. BALEW II
REVISED: 40		DATE: 1-28-88	BY: J. BALEW II
REVISED: 41		DATE: 1-28-88	BY: J. BALEW II
REVISED: 42		DATE: 1-28-88	BY: J. BALEW II
REVISED: 43		DATE: 1-28-88	BY: J. BALEW II
REVISED: 44		DATE: 1-28-88	BY: J. BALEW II
REVISED: 45		DATE: 1-28-88	BY: J. BALEW II
REVISED: 46		DATE: 1-28-88	BY: J. BALEW II
REVISED: 47		DATE: 1-28-88	BY: J. BALEW II
REVISED: 48		DATE: 1-28-88	BY: J. BALEW II
REVISED: 49		DATE: 1-28-88	BY: J. BALEW II
REVISED: 50		DATE: 1-28-88	BY: J. BALEW II
REVISED: 51		DATE: 1-28-88	BY: J. BALEW II
REVISED: 52		DATE: 1-28-88	BY: J. BALEW II
REVISED: 53		DATE: 1-28-88	BY: J. BALEW II
REVISED: 54		DATE: 1-28-88	BY: J. BALEW II
REVISED: 55		DATE: 1-28-88	BY: J. BALEW II
REVISED: 56		DATE: 1-28-88	BY: J. BALEW II
REVISED: 57		DATE: 1-28-88	BY: J. BALEW II
REVISED: 58		DATE: 1-28-88	BY: J. BALEW II
REVISED: 59		DATE: 1-28-88	BY: J. BALEW II
REVISED: 60		DATE: 1-28-88	BY: J. BALEW II
REVISED: 61		DATE: 1-28-88	BY: J. BALEW II
REVISED: 62		DATE: 1-28-88	BY: J. BALEW II
REVISED: 63		DATE: 1-28-88	BY: J. BALEW II
REVISED: 64		DATE: 1-28-88	BY: J. BALEW II
REVISED: 65		DATE: 1-28-88	BY: J. BALEW II
REVISED: 66		DATE: 1-28-88	BY: J. BALEW II
REVISED: 67		DATE: 1-28-88	BY: J. BALEW II
REVISED: 68		DATE: 1-28-88	BY: J. BALEW II
REVISED: 69		DATE: 1-28-88	BY: J. BALEW II
REVISED: 70		DATE: 1-28-88	BY: J. BALEW II
REVISED: 71		DATE: 1-28-88	BY: J. BALEW II
REVISED: 72		DATE: 1-28-88	BY: J. BALEW II
REVISED: 73		DATE: 1-28-88	BY: J. BALEW II
REVISED: 74		DATE: 1-28-88	BY: J. BALEW II
REVISED: 75		DATE: 1-28-88	BY: J. BALEW II
REVISED: 76		DATE: 1-28-88	BY: J. BALEW II
REVISED: 77		DATE: 1-28-88	BY: J. BALEW II
REVISED: 78		DATE: 1-28-88	BY: J. BALEW II
REVISED: 79		DATE: 1-28-88	BY: J. BALEW II
REVISED: 80		DATE: 1-28-88	BY: J. BALEW II
REVISED: 81		DATE: 1-28-88	BY: J. BALEW II
REVISED: 82		DATE: 1-28-88	BY: J. BALEW II
REVISED: 83		DATE: 1-28-88	BY: J. BALEW II
REVISED: 84		DATE: 1-28-88	BY: J. BALEW II
REVISED: 85		DATE: 1-28-88	BY: J. BALEW II
REVISED: 86		DATE: 1-28-88	BY: J. BALEW II
REVISED: 87		DATE: 1-28-88	BY: J. BALEW II
REVISED: 88		DATE: 1-28-88	BY: J. BALEW II
REVISED: 89		DATE: 1-28-88	BY: J. BALEW II
REVISED: 90		DATE: 1-28-88	BY: J. BALEW II
REVISED: 91		DATE: 1-28-88	BY: J. BALEW II
REVISED: 92		DATE: 1-28-88	BY: J. BALEW II
REVISED: 93		DATE: 1-28-88	BY: J. BALEW II
REVISED: 94		DATE: 1-28-88	BY: J. BALEW II
REVISED: 95		DATE: 1-28-88	BY: J. BALEW II
REVISED: 96		DATE: 1-28-88	BY: J. BALEW II
REVISED: 97		DATE: 1-28-88	BY: J. BALEW II
REVISED: 98		DATE: 1-28-88	BY: J. BALEW II
REVISED: 99		DATE: 1-28-88	BY: J. BALEW II
REVISED: 100		DATE: 1-28-88	BY: J. BALEW II