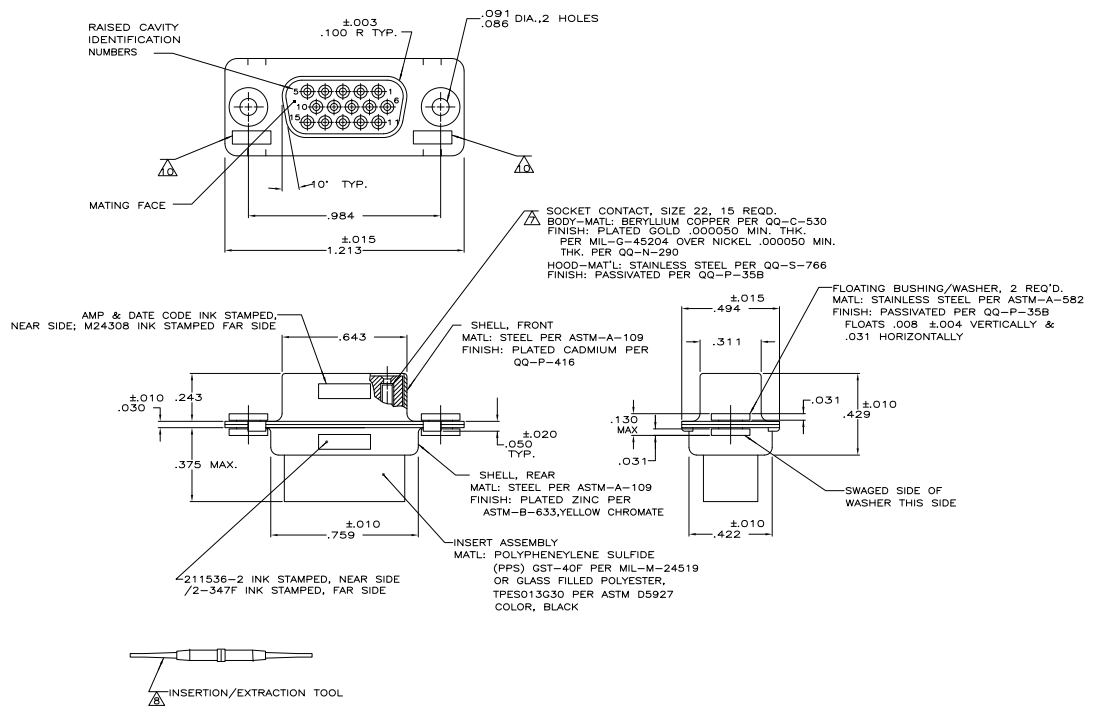


REV	DATE	DESCRIPTION	BY	CHK	APP
DF	DO				
G		REVISED PER ECO-10-02841			



- THIS RECEPTACLE WILL MATE WITH ANY 15 POSN., SIZE 1 PLUG IN AMPLIMITE SERIES.
 - MAXIMUM WIRE INSULATION TO BE USED WITH THIS RECEPTACLE IS .054 DIA.
 - SST RETENTION CLIPS ARE INCLUDED IN INSERTS.
- PACKAGE STAMPED M24308/2-487F & AMP P/N 211536-1
 - PACKAGE STAMPED M24308/2-347F & AMP P/N 211536-2
 - PACKAGE STAMPED M24308/2-358F & AMP P/N 211536-3
 - AMP P/N 204351-1; MIL P/N 57-354, INCLUDED IN KIT
 - AMP P/N 91067-1; MIL P/N M81969/1-04
 - CONNECTOR SUPPLIED WITHOUT CONTACTS; SHOWN FOR ILLUSTRATION ONLY.
 - UL/CSA DESIGNATION STAMPED IN THIS AREA.

SUPSD BY 204536-2 & 91067-1		SAME AS -1 EXCEPT:		211536-3
		SAME AS -1 EXCEPT:		211536-2
		AS SHOWN		211536-1
DESCRIPTION		PART NO		
THIS DRAWING IS A CONTROLLED DOCUMENT. DATE: 06-21-88 DESIGNED BY: J. J. FOSMAN DRAWN BY: J. J. FOSMAN CHECKED BY: J. J. FOSMAN APPROVED BY: J. J. FOSMAN TYS Electronics Corporation, Harrisburg, PA 17105-3608 RECEPTACLE ASSEMBLY, AMPLIMITE 15 POSITION, SIZE 1, SERIES 90 W/DUAL FLOAT BUSHING SIZE: A1 DATE: 007799 DRAWING NO: 211536 CUSTOMER DRAWING SHEET: 4-1 OF 1				