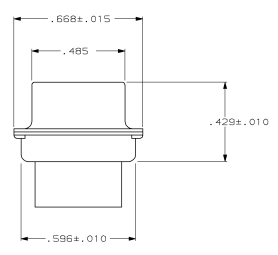
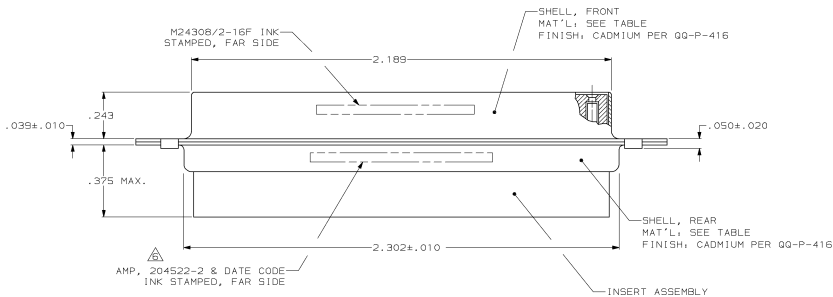
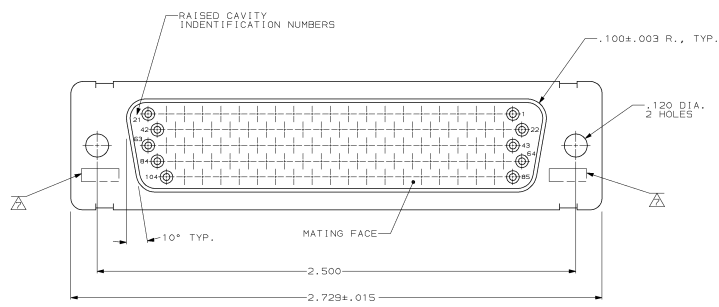


DRAWING MADE IN THIRD ANGLE PROJECTION
 THIS DRAWING IS UNPUBLISHED. RELEASED FOR PUBLICATION
 © Copyright 1987 BY AMP INCORPORATED. ALL INTERNATIONAL RIGHTS RESERVED.

PRG		REV		REV		REV		REV		REV		REV		REV	
NO	DATE	BY	CHK	APP	DATE	BY	CHK	APP	DATE	BY	CHK	APP	DATE	BY	CHK



1. THIS RCPT. IS DESIGNED TO CONFORM TO THE LATEST ISSUE OF MIL-C-24308
 2. MAX WIRE INSUL TO BE USED WITH THIS RCPT IS .054 DIA
 3. METAL RETENTION CLIPS ARE INCLUDED IN INSERTS
 4. PACKAGE STAMPED M 24308/2-291F
 5. THIS RCPT. WILL ACCEPT SIZE 22 SOCKET CONTACT M 39029/57-354 OR ANY AMP HOD-22 SOCKET CONTACT
- AMP PART NO. STAMPED ON CONNECTOR REPRESENTS KIT NUMBER WITH CONTACTS
- UL/CSA DESIGNATION STAMPED IN THIS AREA, OPTIONAL

SUPSD BY 204510-1	STEEL, CLASS G	PHENOLIC COLOR: BLACK	204510-3
SUPSD BY 206065-4	BRASS	DIALYL PATHALATE COLOR: BLUE	204510-2
	STEEL, CLASS G	DIALYL PATHALATE COLOR: BLUE	204510-1

SHELL MAT'L		INSERT MAT'L		PART NO	
DO NOT SCALE PRINT, UNLESS SPECIFIED	DR 12-3-87	AMP INCORPORATED 1000 W. 17th St., Berwyn, Pa. 19312			
DIMENSIONS IN INCHES	C.L. THOMAS				
TOLERANCES UNLESS OTHERWISE SPECIFIED	CHK 1-25-88	NAME			
2 F.L.C. DEC ± .005	F.C. BALEW III	AMPLITE RCPT. FOR SOCKET CONTACTS			
3 F.L.C. DEC ± .005	APPD 1-25-88	HI-DENSITY "D" CONNECTOR			
INCHES ± .030"	F.C. BALEW III	SIZE 6 (104 POSN) SERIES 90			
MATERIAL	APPD 1-26-88	SIZE			
SEE TABLE	D.J.M.	D 00779			
PRODUCT SPEC		DRAWING NO			
		204510			
FINISH	APPLICATION SPEC	SCALE			
SEE CALLOUTS		4:1			
WEIGHT		SHEET			
		1 OF 1			

CUSTOMER DRAWING