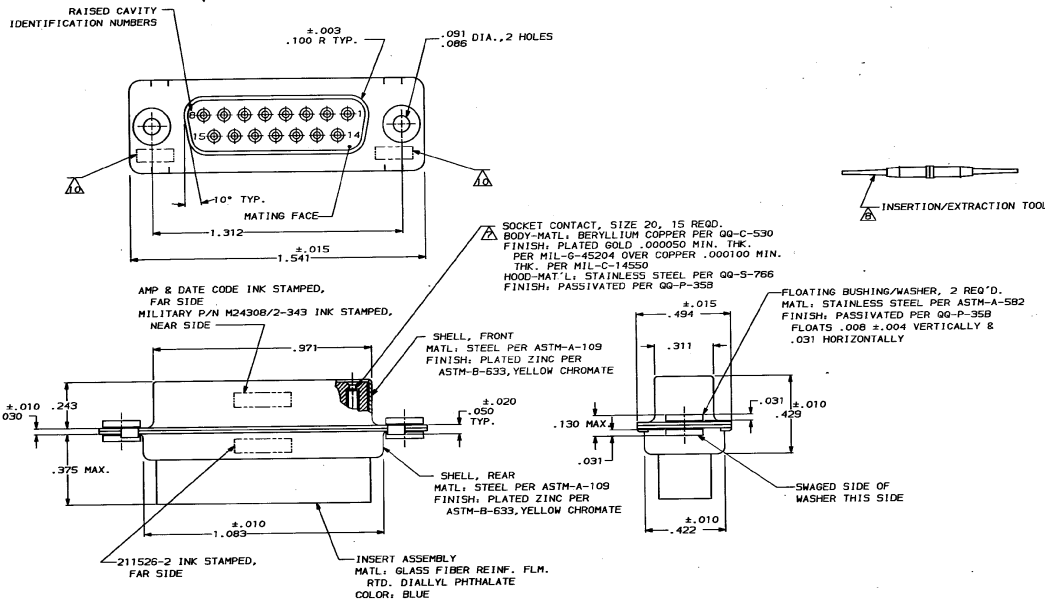


DRAWING MADE IN THIRD ANGLE PROJECTION  
 THIS DRAWING IS UNPUBLISHED. RELEASED FOR PUBLICATION  
 © COPYRIGHT 19 BY AMP INCORPORATED. ALL INFORMATION IS UNCLASSIFIED.

REVISED		REVISED		REVISED		REVISED	
NO.	DATE	BY	CHKD.	NO.	DATE	BY	CHKD.
1				1			
2				2			
3				3			
4				4			
5				5			
6				6			
7				7			
8				8			
9				9			
10				10			
11				11			
12				12			
13				13			
14				14			
15				15			
16				16			
17				17			
18				18			
19				19			
20				20			
21				21			
22				22			
23				23			
24				24			
25				25			
26				26			
27				27			
28				28			
29				29			
30				30			
31				31			
32				32			
33				33			
34				34			
35				35			
36				36			
37				37			
38				38			
39				39			
40				40			
41				41			
42				42			
43				43			
44				44			
45				45			
46				46			
47				47			
48				48			
49				49			
50				50			
51				51			
52				52			
53				53			
54				54			
55				55			
56				56			
57				57			
58				58			
59				59			
60				60			
61				61			
62				62			
63				63			
64				64			
65				65			
66				66			
67				67			
68				68			
69				69			
70				70			
71				71			
72				72			
73				73			
74				74			
75				75			
76				76			
77				77			
78				78			
79				79			
80				80			
81				81			
82				82			
83				83			
84				84			
85				85			
86				86			
87				87			
88				88			
89				89			
90				90			
91				91			
92				92			
93				93			
94				94			
95				95			
96				96			
97				97			
98				98			
99				99			
100				100			



1. THIS RECEPTACLE WILL MATE WITH ANY 15 POSN., SIZE 2 PLUG IN ANPLIMITE SERIES.
  2. MAXIMUM WIRE INSULATION TO BE USED WITH THIS RECEPTACLE IS .069 DIA.
  3. SST RETENTION CLIPS ARE INCLUDED IN INSERTS.
- ▲ PACKAGE STAMPED M24308/2-4B3 & AMP P/N 211526-1
  - ▲ PACKAGE STAMPED M24308/2-343 & AMP P/N 211526-2
  - ▲ PACKAGE STAMPED M24308/2-354 & AMP P/N 211526-3
  - ▲ AMP P/N 205090-1, MIL P/N 63-368, INCLUDED IN KIT.
  - ▲ AMP P/N 91067-2, MIL P/N M81969/1-02.
  - ▲ CONNECTOR SUPPLIED WITHOUT CONTACTS, SHOWN FOR ILLUSTRATION ONLY.
  - ▲ UL/CSA DESIGNATION STAMPED IN THIS AREA.

DESCRIPTION		DATE	
SAME AS -1 EXCEPT	▲▲▲	211526-3	
SAME AS -1 EXCEPT	▲▲	211526-2	
AS SHOWN	▲▲	211526-1	
<b>AMP</b> INCORPORATED RECEPTACLE ASS'Y., ANPLIMITE 15 POSN., SIZE 2, SERIES 109, W/DUAL FLOAT BUSHINGS			
FINISH	SEE CALLOUT	SIZE	D
APPLICATION SPEC	SEE CALLOUT	FISH NO	00779
WEIGHT		DRAWING NO	211526
		SCALE	NTS
		SHEET	1 OF 1

CUSTOMER DRAWING