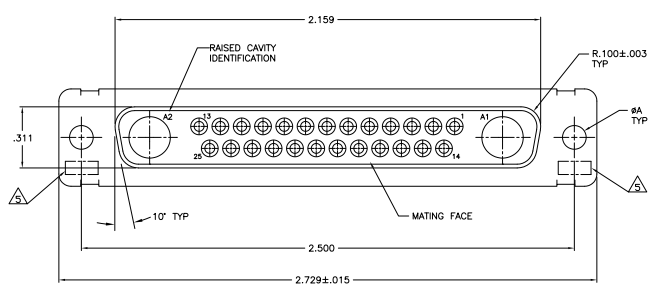
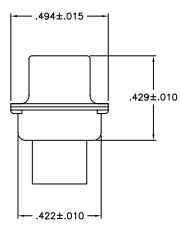
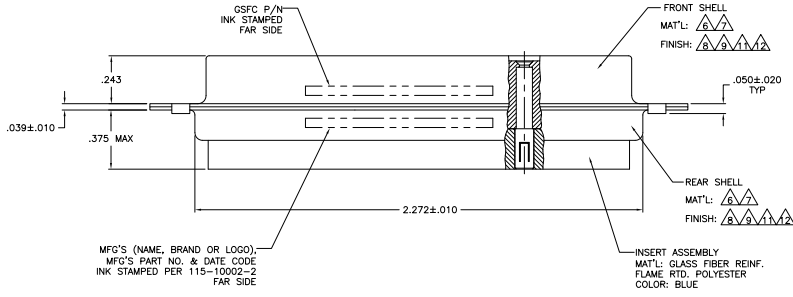


THIS DRAWING IS UNPUBLISHED. RECEIVED FOR INFORMATION. ALL RIGHTS RESERVED.

REV	DATE	DESCRIPTION	BY	CHKD
DF	DO			
K		REVISED PER ECO-10-011807		



1. THIS RECEPTACLE WILL MATE WITH ANY 27C2, SIZE 4 PLUG IN AMPLIMITE SERIES.
  2. MAXIMUM WIRE INSULATION TO BE USED WITH THIS RECEPTACLE IS #.068.
  3. THIS CONNECTOR ACCEPTS (2) POWER 8, OR COAX SOCKET CONTACTS IN POSITIONS A1 THRU A2, PURCHASED SEPARATELY.
  4. THIS CONNECTOR ACCEPTS SIZE 20 SOCKET SIGNAL CONTACTS IN POSITIONS 1 THRU 25, PURCHASED SEPARATELY.
- ▲ UL/CSA DESIGNATION STAMPED IN THIS AREA, OPTIONAL.  
 ▲ STEEL PER ASTM-A-109.  
 ▲ BRASS PER MIL-C-50 AND ASTM-B-36 UNS NO. C26000.  
 ▲ FINISH: CADMIUM PLATED PER QQ-P-416.  
 ▲ GOLD PLATED PER MIL-G-45204 TYPE II, GRADE C, CLASS 1 OVER COPPER PER MIL-C-14550, CLASS IV.  
 ▲ FINISH: TIN PER ASTM-B-545 .000200 MIN THK OVER COPPER PER AMS2418 .000100-.000200 THK.  
 ▲ FINISH: TIN PER ASTM-B-545 .000200 MIN THK OVER COPPER PER AMS2418 .000100-.000200 THK.  
 ▲ FINISH: ZINC PLATE PER ASTM-B-633 .000200-.000400 THK WITH SUPPLEMENTARY CHROMATE (Cr3+).



▲▲	.120	-	5-212542-4
▲▲	.120	-	5-212542-1
▲▲	.120	-	212542-4
▲▲	.154	311P405-21S-B-15	212542-3
▲▲	.120	311P405-21S-B-12	212542-2
▲▲	.120	-	212542-1
REMARKS	8A	GSFC P/N	PART NO.

THIS DRAWING IS A CONTROLLED DOCUMENT. REV. C. THOMAS. STUBBS. YTS Electronics Corporation. Harrisburg, PA 17105-3608.

REVISIONS	DATE	DESCRIPTION	BY	CHKD
1		RECEPTACLE ASSEMBLY AMPLIMITE 27C2 SIZE 4, SERIES 109, COAX MIX		

SIZE: A1 00779 (Q)=212542  
 CUSTOMER DRAWING  
 SHEET: 4-1 OF 1