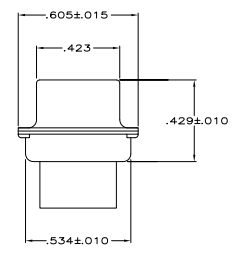
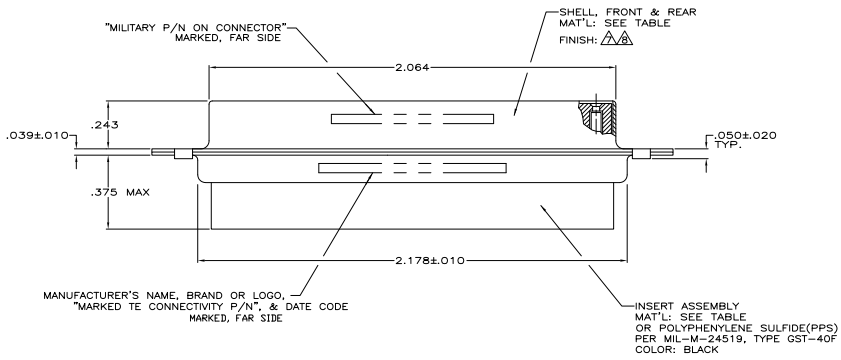
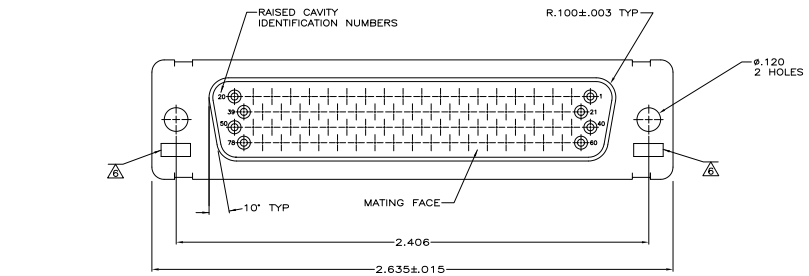


REV	DATE	DESCRIPTION	BY	CHK	APP
DF	DO				
ST		REVISED PER EDD-11-005030	11MMR11	RK	HMR

- THIS RCPT. IS DESIGNED TO CONFORM TO THE LATEST ISSUE OF MIL-C-24308.
 - MAX WIRE INSUL. TO BE USED WITH THIS RCPT IS .054 DIA.
 - METAL RETENTION CLIPS ARE INCLUDED IN INSERTS.
 - THIS RCPT. WILL ACCEPT SIZE 22 SOCKET CONTACT M39029/57-354 OR ANY TYCO HDD-22 SOCKET CONTACT. CONTACTS ORDERED SEPARATELY.
- △ MFG'S PART NO. MARKED ON CONNECTOR REPRESENTS KIT NUMBER WITH CONTACTS.
 - △ UL/CSA DESIGNATION STAMPED IN THIS AREA, OPTIONAL.
 - △ FINISH: CADMIUM PER QQ-P-416.
 - △ FINISH: BRIGHT TIN PER ASTM-B-545 .000400-.000550 THK OVER COPPER PER AMS2418 .000050 MIN THK.



SUPSD BY	MILITARY P/N ON PACKAGE	MILITARY P/N ON CONNECTOR	MFG'S P/N ON CONNECTOR	REMARKS	SHELL FINISH	SHELL MAT'L	INSERT MAT'L	PART NO.
	-	-	204508-5	-	△	STEEL, CLASS G	POLYPHENYLENE SULFIDE(PPS) PER MIL-M-24519, TYPE GST-40F COLOR: BLACK	204508-5
SUPSD BY 204508-1	-	-	-	-	-	STEEL, CLASS G	PHENOLIC COLOR: BLACK	204508-3
SUPSD BY 206505-4	-	-	-	-	-	BRASS	DIALYL PHTHALATE COLOR: BLUE	204508-2
	M24308/2-290F	M24308/2-15F	204520-2	△	△	STEEL, CLASS G	POLYPHENYLENE SULFIDE(PPS) PER MIL-M-24519, TYPE GST-40F COLOR: BLACK	204508-1

THIS DRAWING IS A CONTROLLED DOCUMENT. (REV. 01-2007-07)

TE Connectivity

AMPLIMITE RCPT FOR SOCKET CONTACTS HI-DENSITY D CONNECTOR SIZE 5 (75 POIN) SERIES 90

SEE TABLE FOR DIMENSIONS

SEE TABLE FOR FINISHES

SEE TABLE FOR MATERIALS

SEE TABLE FOR PART NO.

SEE TABLE FOR CUSTOMER DRAWING

SEE TABLE FOR DATE

SEE TABLE FOR SIZE

SEE TABLE FOR DRAWING NO

SEE TABLE FOR REV

SEE TABLE FOR SHEET

SEE TABLE FOR TOTAL