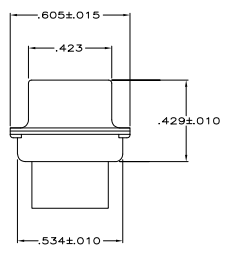
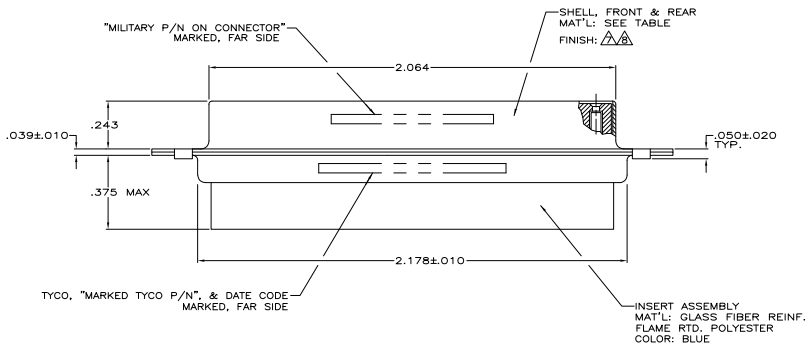
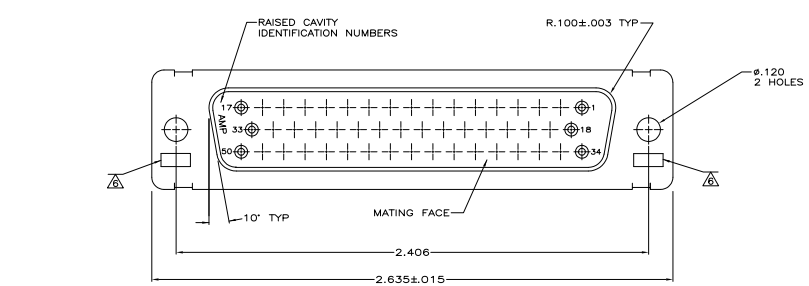


REV	DATE	DESCRIPTION	BY	CHK	APP
1	05-05	REV PER ECO-05-002792	AA	DM	



- THIS RCPT. IS DESIGNED TO CONFORM TO THE LATEST ISSUE OF MIL-C-24308.
 - MAX WIRE INSUL. TO BE USED WITH THIS RCPT IS .068 DIA.
 - STAINLESS STEEL RETENTION CLIPS ARE INCLUDED IN INSERTS.
 - THIS RCPT. WILL ACCEPT SIZE 20 SOCKET CONTACT M39029/63-368 OR ANY TYCO HD-20 SOCKET CONTACT. CONTACTS ORDERED SEPARATELY.
- ⚠ TYCO PART NO. MARKED ON CONNECTOR REPRESENTS KIT NUMBER WITH CONTACTS.
 - ⚠ UL/CSA DESIGNATION STAMPED IN THIS AREA, OPTIONAL.
 - ⚠ FINISH: CADMIUM PER QQ-P-416.
 - ⚠ FINISH: BRIGHT TIN PER ASTM-B-545 .000400-.000550 THK OVER COPPER PER AMS2418 .000050 MIN THK.

SUPSD BY	MILITARY P/N ON PACKAGE	MILITARY P/N ON CONNECTOR	TYCO P/N ON CONNECTOR	REMARKS	SHELL FINISH	SHELL MAT'L	PART NO.
-	-	-	205169-4	-	⚠	STEEL PER ASTM-A-109	205169-4
SUPSD BY 206805-2	-	-	-	-	-	BRASS	205169-2
M24308/2-285F	M24308/2-5F	205563-2	-	⚠	⚠	STEEL PER ASTM-A-109	205169-1

THIS DRAWING IS A CONTROLLED DOCUMENT.		DATE: 08-2007	BY: [Signature]	TYCO ELECTRONICS CORPORATION
DRAWN: [Signature]		DATE: 10-2007	BY: [Signature]	Harrisburg, Pa 17105-3608
CHECKED: [Signature]		DATE: 10-2007	BY: [Signature]	
APPROVED: [Signature]		DATE: 10-2007	BY: [Signature]	
TITLE: AMPLITUDE RCPT FOR SOCKET CONTACTS		SIZE: 5 (50 POSN) SERIES 109	REV: 1	REF: N
PART NO: A100779		QTY: 205169	CUSTOMER DRAWING	