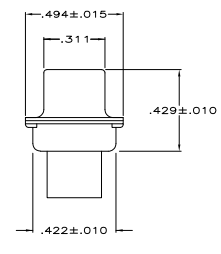
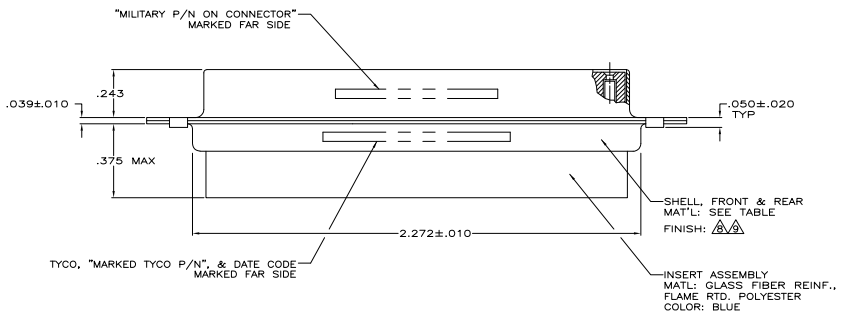
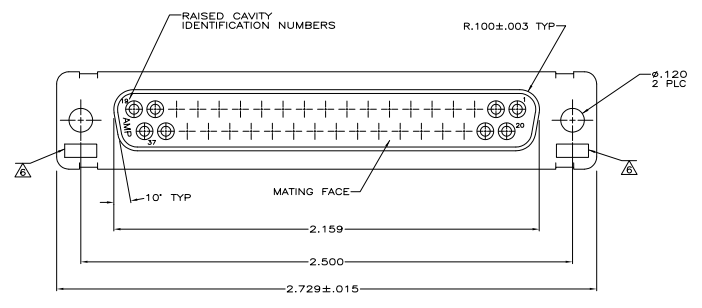


REV	DATE	DESCRIPTION	BY	APP
DF	DO			
P		REV PER ECO-06-002792	05-05	AA DM



- THIS RCPT. IS DESIGNED TO CONFORM TO THE LATEST ISSUE OF MIL-C-24308.
 - MAX WIRE INSUL. TO BE USED WITH THIS RCPT IS .068 DIA.
 - STAINLESS STEEL RETENTION CLIPS ARE INCLUDED IN INSERTS.
 - THIS RCPT. WILL ACCEPT SIZE 20 SOCKET CONTACT M39029/63-368 OR ANY TYCO HD-20 SOCKET CONTACT. CONTACTS ORDERED SEPARATELY.
- ⚠️ TYCO PART NO. MARKED ON CONNECTOR REPRESENTS KIT NUMBER WITH CONTACTS.
 - ⚠️ UL/CSA DESIGNATION STAMPED IN THIS AREA, OPTIONAL.
 - ⚠️ RESTRICTED ITAR-DRAWING.
 - ⚠️ FINISH: CADMIUM PER QQ-P-416.
 - ⚠️ FINISH: BRIGHT TIN PER ASTM-B-545 .000400-.000550 THK OVER COPPER PER AMS2418 .000050 MIN THK.

-	-	⚠️	STEEL PER ASTM-A-109	-	205167-5	205167-5
-	⚠️	-	-	-	-	205167-4
SUPSD BY 205291-1	-	⚠️	STEEL PER ASTM-A-109	-	205167-3	205167-3
SUPSD BY 206803-2	-	-	BRASS	M24308/6-4F	205561-4	205167-2
M24308/2-284F	⚠️	⚠️	STEEL PER ASTM-A-109	M24308/2-4F	205561-2	205167-1
MILITARY P/N ON PACKAGE	REMARKS	SHELL FINISH	SHELL MAT'L	MARKED MILITARY PART NO.	MARKED TYCO PART NO.	PART NO.

THIS DRAWING IS A CONTROLLED DOCUMENT. **THOMAS** 31-08-93 **Elcodis** Tyco Electronics Corporation Harrisburg, Pa 17105-3008

INCHES: **UNLESS NOTED** **UNLESS NOTED** **UNLESS NOTED** **UNLESS NOTED**

REVISIONS: **UNLESS NOTED** **UNLESS NOTED** **UNLESS NOTED** **UNLESS NOTED**

DATE: 05-05-05 DRAWING NO: A100779 Q=205167

CUSTOMER DRAWING: 4.1 SHEET 1 OF 1