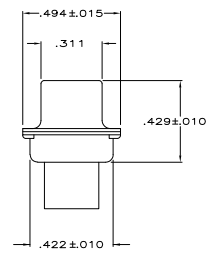
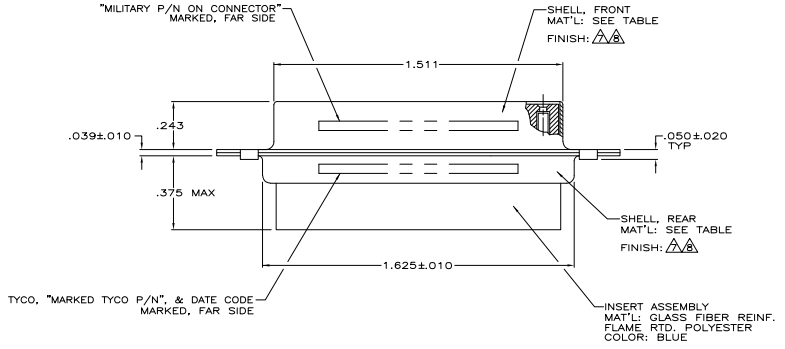
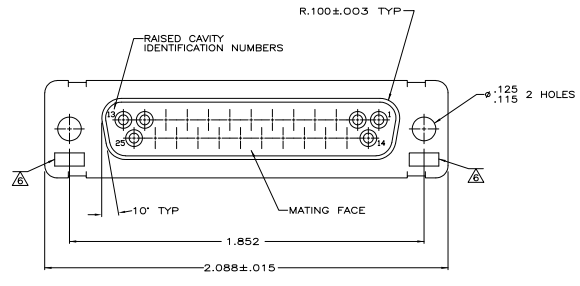


REV	DATE	DESCRIPTION	BY	CHK	APP
DF	DO				
M		REV PER ECO-05-002792		AA	DM

- THIS RCPT. IS DESIGNED TO CONFORM TO THE LATEST ISSUE OF MIL-C-24308.
  - MAX WIRE INSUL. TO BE USED WITH THIS RCPT IS .068 DIA.
  - STAINLESS STEEL RETENTION CLIPS ARE INCLUDED IN INSERTS.
  - THIS RCPT. WILL ACCEPT SIZE 20 SOCKET CONTACT M39029/63-368 OR ANY TYCO HD-20 SOCKET CONTACT. CONTACTS ORDERED SEPARATELY.
- ⚠ TYCO PART NO. MARKED ON CONNECTOR REPRESENTS KIT NUMBER WITH CONTACTS.  
 ⚠ UL/CSA DESIGNATION STAMPED IN THIS AREA, OPTIONAL.  
 ⚠ CADMIUM PER QQ-P-416.  
 ⚠ BRIGHT TIN PER ASTM-B-545 .000400-.000550 THK OVER COPPER PER AMS2418 .000050 MIN THK.



TYCO P/N MARKED ON CONNECTOR	MILITARY P/N ON PACKAGE	MILITARY P/N ON CONNECTOR	REMARKS	SHELL FINISH	SHELL MAT'L	PART NO.
205165-4	-	-	-	⚠	STEEL PER ASTM-A-109	205165-4
SUPSD BY 206801-2	-	-	-	-	BRASS	205165-2
205559-2	M24308/2-283F	M24308/2-3F	⚠	⚠	STEEL PER ASTM-A-109	205165-1

THIS DRAWING IS A CONTROLLED DOCUMENT.

INCHES: 12-001-87  
 METRIC: 10-001-87  
 DECIMALS: 10-001-87  
 FRACTIONS: 10-001-87  
 ANGLES: 10-001-87  
 DIMENSIONS: 10-001-87  
 TOLERANCES: 10-001-87  
 UNLESS OTHERWISE SPECIFIED

THIS DRAWING IS A CONTROLLED DOCUMENT.  
 CUSTOMER DRAWING  
 A100779  
 Q=205165  
 SHEET 1 OF 1