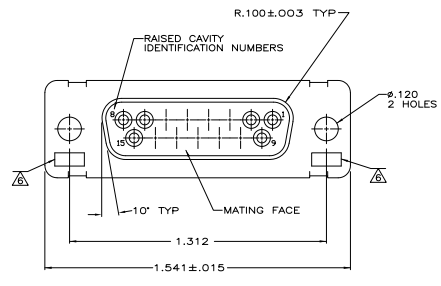
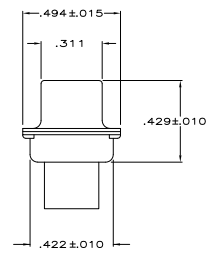
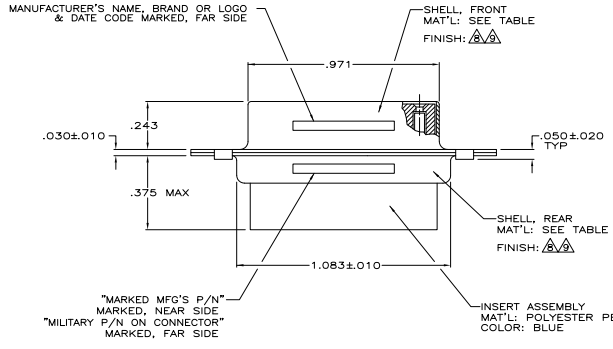


REV	DATE	DESCRIPTION	BY	CHK	APP
DF	DO				
N		REV PER ECO-08-030008			22JAN2009 PK RL



- THIS RCPT. IS DESIGNED TO CONFORM TO THE LATEST ISSUE OF MIL-C-24308.
 - MAX WIRE INSUL. TO BE USED WITH THIS RCPT IS .068 DIA.
 - STAINLESS STEEL RETENTION CLIPS ARE INCLUDED IN INSERTS.
 - THIS RCPT. WILL ACCEPT SIZE 20 SOCKET CONTACT M39029/63-368 OR ANY TYCO HD-20 SOCKET CONTACT. CONTACTS ORDERED SEPARATELY.
- △ MFG'S PART NO. MARKED ON CONNECTOR REPRESENTS KIT NUMBER WITH CONTACTS.
 - △ UL/CSA DESIGNATION STAMPED IN THIS AREA, OPTIONAL.
 - △ RESTRICTED ITAR ASSEMBLY.
 - △ CADMIUM PER QQ-P-416.
 - △ BRIGHT TIN PER ASTM-B-545 .000400-.000550 THK OVER COPPER PER AMS2418 .000050 MIN THK.



MFG'S P/N MARKED ON CONNECTOR	MILITARY P/N ON PACKAGE	MILITARY P/N ON CONNECTOR	REMARKS	SHELL FINISH	SHELL MAT'L	PART NO.
205163-5	-	-	-	△	STEEL PER ASTM-A-109	205163-5
-	-	-	△	-	-	205163-4
SUPSD BY 205187-1	-	-	-	-	STEEL PER ASTM-A-109	205163-3
SUPSD BY 206799-2	-	-	-	-	BRASS	205163-2
205557-2	M24308/2-282F	M24308/2-2F	△	△	STEEL PER ASTM-A-109	205163-1

THIS DRAWING IS A CONTROLLED DOCUMENT. **THOMAS** 12-001-07 **TYS** Tys Electronics Corporation Harrisburg, Pa 17105-3608

DESIGNED BY: **W. BALLEW** 10-001-07 DATE: **10-001-07**

APPROVED BY: **F. BALLEW** 10-001-07

DESCRIPTION: AMPHIMITE RCPT FOR SOCKET CONTACTS

REV: 1
 2
 3
 4
 5
 6
 7
 8
 9
 10

SEE CALLOUTS

CUSTOMER DRAWING: A100779 Q=205163

DATE: 4.1 SHEET: 1 OF 1