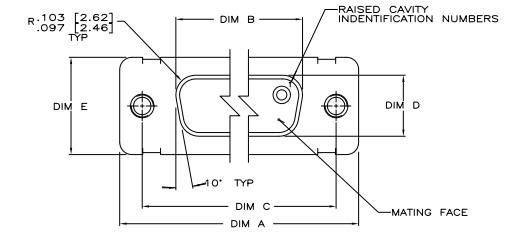
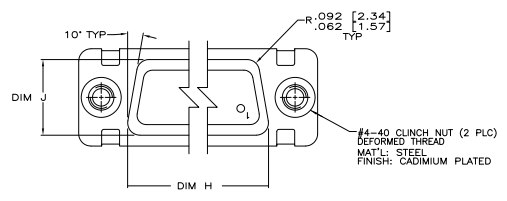
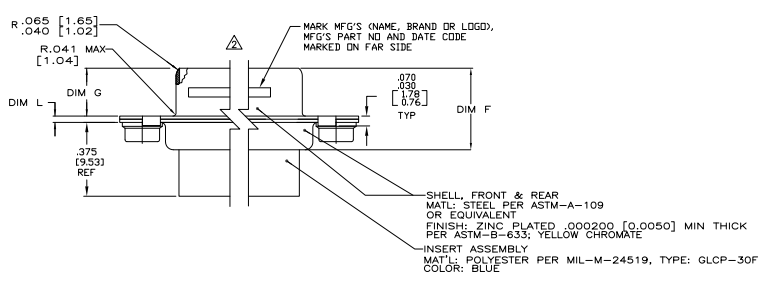


REV	DATE	DESCRIPTION	BY	CHK	APP
B	11-13-05	REV PER ECO 05-12286	BTM	DAW	DM
C	11-13-05	REV PER ECO 06-09752	BTM	DAW	PK



1. THE CONNECTORS DESCRIBED IN THIS DOCUMENT WILL MATE WITH ANY PLUG CONNECTOR WITH THE SAME INSERT ARRANGEMENT.
- △ MARKED WITH .047 [1.19]-.062 [1.57] HIGH CHARACTERS. FAR SIDE REFERS TO THE WIDE SIDE OF THE KEYSTONE. NEAR SIDE REFERS TO THE NARROW SIDE OF THE KEYSTONE. IF THE FRONT SHELL IS TOO SMALL FOR "MFG'S"(NAME, BRAND OR LOGO) MFG'S PART NUMBER AND DATE CODE, THEN SPLIT AS FOLLOWS:  
 A. MFG'S PART NUMBER ON REAR SHELL, NEAR SIDE.  
 B. "MFG'S" (NAME, BRAND OR LOGO) AND DATE CODE ON FRONT SHELL, NEAR SIDE.



L	J	H	G	F	E	D	C	B	A	INSERT ARRANGEMENT	NO OF POS	SHELL SIZE	PART NUMBER
.049 [1.24]	.544 [13.85]	2.188 [55.68]	.248 [6.30]	.439 [11.15]	.650 [16.51]	.458 [11.67]	.241 [6.12]	2.063 [52.52]	2.530 [64.31]	MS18277-1	50	5	1218749-5
.029 [0.74]	.324 [8.31]	2.188 [55.68]	.238 [6.03]	.419 [10.64]	.650 [16.51]	.418 [10.62]	.240 [6.10]	2.063 [52.52]	2.620 [66.51]	MS18276-1	37	4	1218749-4
.049 [1.24]	.432 [10.97]	2.282 [57.96]	.248 [6.30]	.439 [11.15]	.609 [15.47]	.316 [8.03]	2.505 [63.63]	2.164 [54.97]	2.744 [69.70]	MS18275-1	26	3	1218749-3
.029 [0.74]	.412 [10.46]	2.282 [57.96]	.238 [6.03]	.419 [10.64]	.609 [15.47]	.306 [7.77]	2.495 [63.37]	2.164 [54.97]	2.714 [68.94]	MS18274-1	15	2	1218749-2
.049 [1.24]	.432 [10.97]	1.635 [41.53]	.248 [6.30]	.439 [11.15]	.609 [15.47]	.316 [8.03]	1.977 [47.17]	1.516 [38.51]	2.103 [53.42]	MS18273-1	9	1	1218749-1
.029 [0.74]	.412 [10.46]	1.635 [41.53]	.238 [6.03]	.419 [10.64]	.609 [15.47]	.306 [7.77]	1.947 [46.51]	1.506 [38.25]	2.073 [52.65]				
.040 [1.02]	.432 [10.97]	1.073 [27.25]	.248 [6.30]	.439 [11.15]	.609 [15.47]	.316 [8.03]	1.307 [33.20]	1.966 [49.93]	1.526 [38.76]				
.020 [0.51]	.412 [10.46]	1.073 [27.25]	.238 [6.03]	.419 [10.64]	.609 [15.47]	.306 [7.77]	1.277 [32.44]	1.966 [49.93]	1.526 [38.76]				
.040 [1.02]	.432 [10.97]	.749 [19.02]	.238 [6.03]	.419 [10.64]	.479 [12.17]	.306 [7.77]	.979 [24.87]	1.638 [41.62]	1.198 [30.43]				
.020 [0.51]	.412 [10.46]	.749 [19.02]	.238 [6.03]	.419 [10.64]	.479 [12.17]	.306 [7.77]	.979 [24.87]	1.638 [41.62]	1.198 [30.43]				

THIS DRAWING IS A CONTROLLED DOCUMENT. DATE 11-13-05 BY BTM/DAW

REVISIONS: 11-13-05

RECEPTACLE ASSY,AMPLITE,SERIES 109, ZINC PLATED WITH 4-40 CLUNCH NUTS

CUSTOMER DRAWING: 100779G-1218749

DATE: 11-13-05

REV: 1

BY: BTM

CHK: DAW

APP: DAW